

Lost In Space: Lines and Tubes in the Wrong Places

Katrina Acosta, M.D.
June 30, 2005

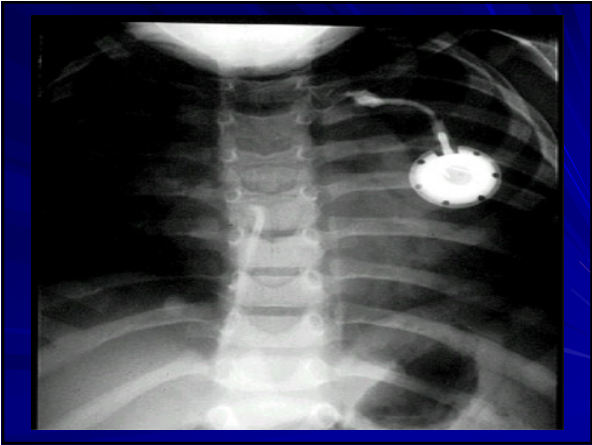
Objectives:

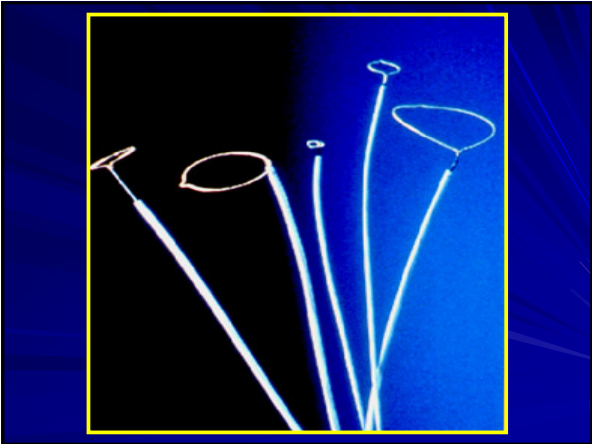
- Review normal position of central venous catheters
- Review normal position of pulmonary artery catheters
- Review normal position of endotracheal tubes
- Review normal position of nasogastric and feeding tubes

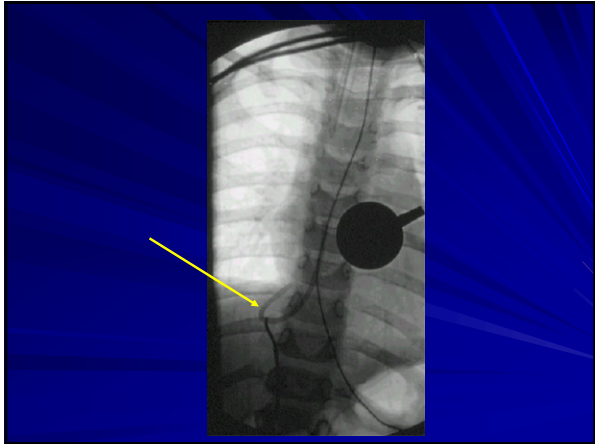
COMPLICATIONS: CHRONIC

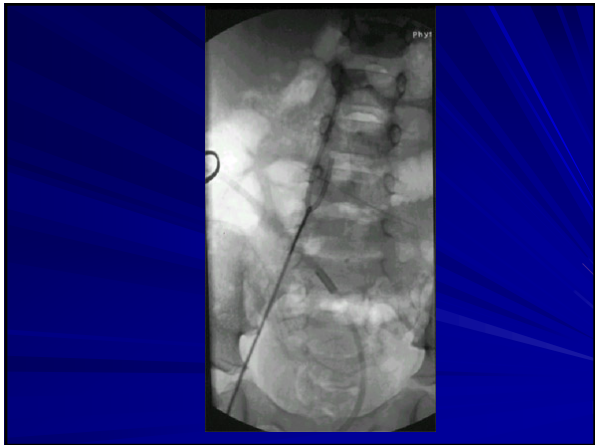
Non-function
Catheter fragmentation
Infection

Poor flow and drawback.









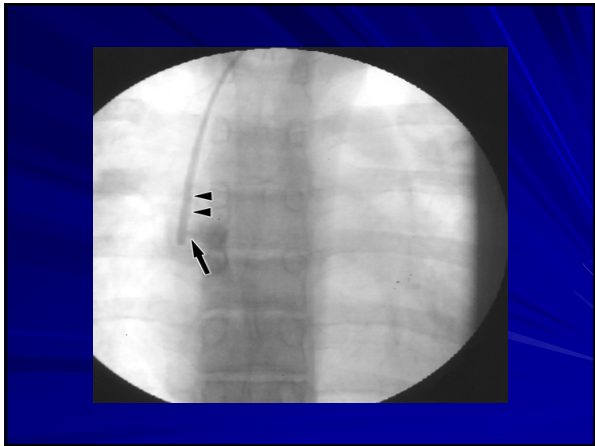
Decreased flow rates during dialysis.

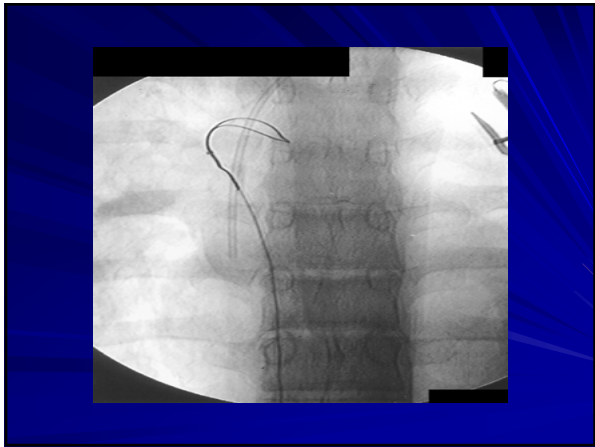


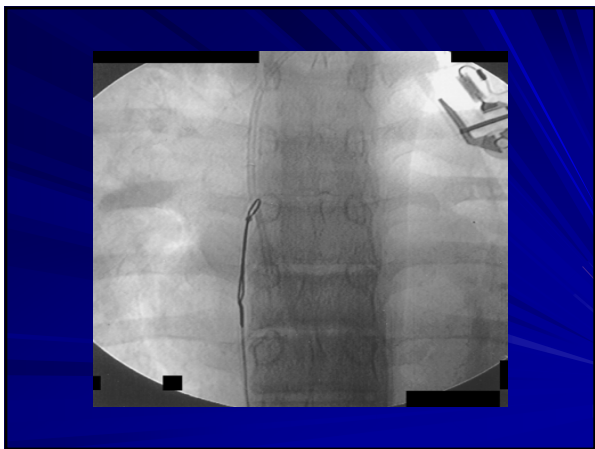
**COMPLICATIONS:
CHRONIC**

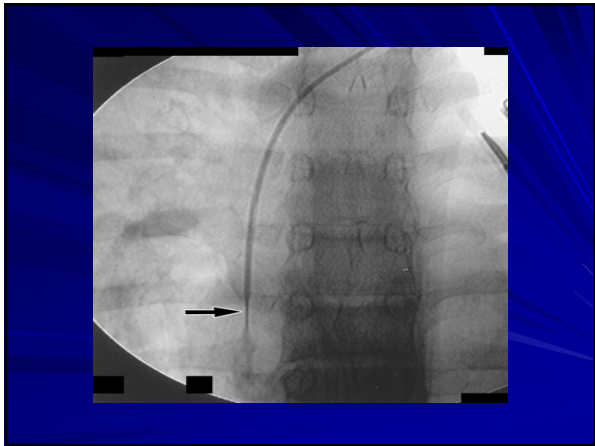
Non-function
Catheter fragmentation
Infection

No drawback of left internal jugular vein port that was placed 13 months earlier.





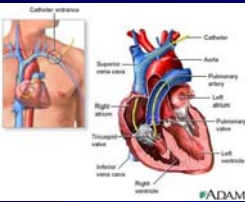




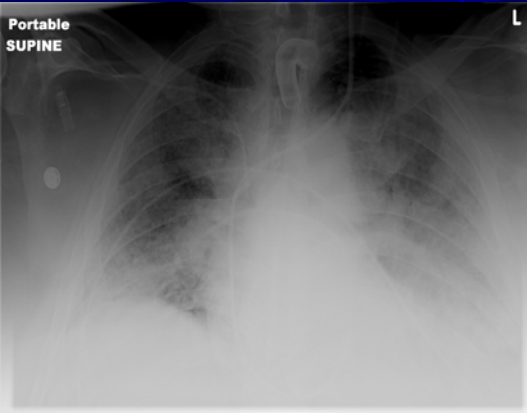
**COMPLICATIONS:
CHRONIC**

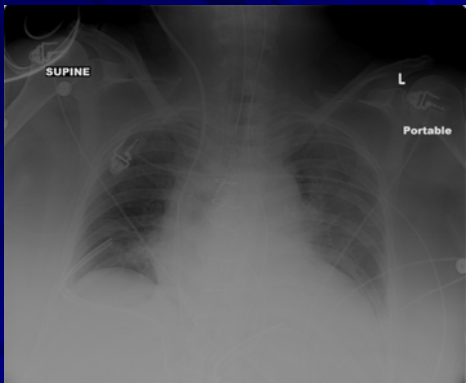
Non-function
Catheter fragmentation
Infection



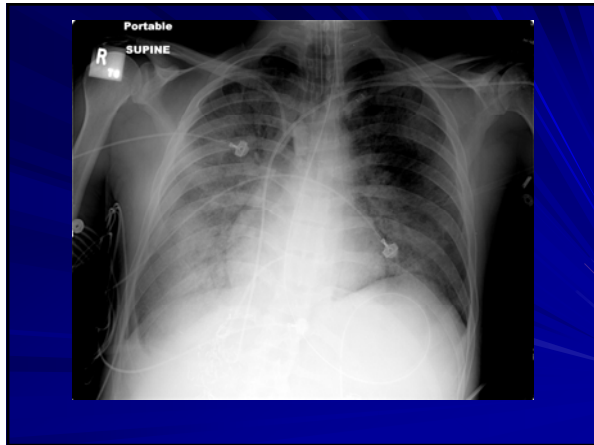


- To evaluate circulatory volume under the following conditions:
 - Heart failure
 - Shock
 - Acute valvular regurgitation
 - Congenital heart disease
 - Burns
 - Renal disease
- To monitor for complications of acute myocardial infarction
- To monitor effects of certain cardiovascular drugs





Abnormal waveform analysis
after Swan ganz catheter
placement.



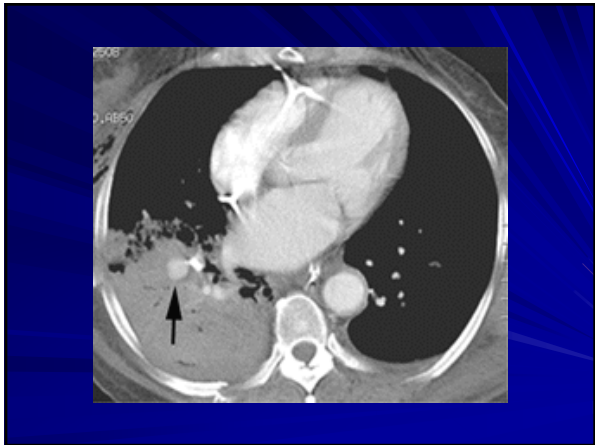
Postprocedural radiograph after
Swan-Ganz placement.

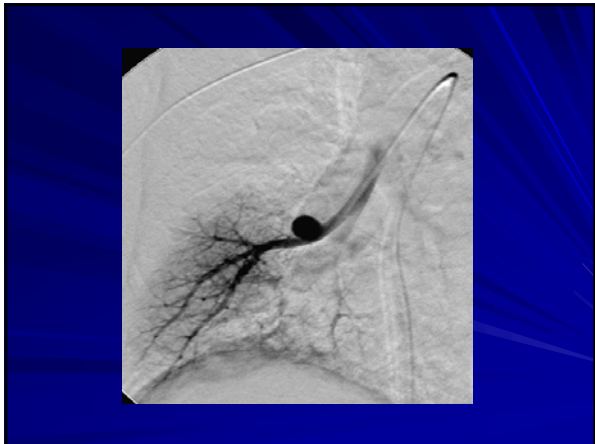


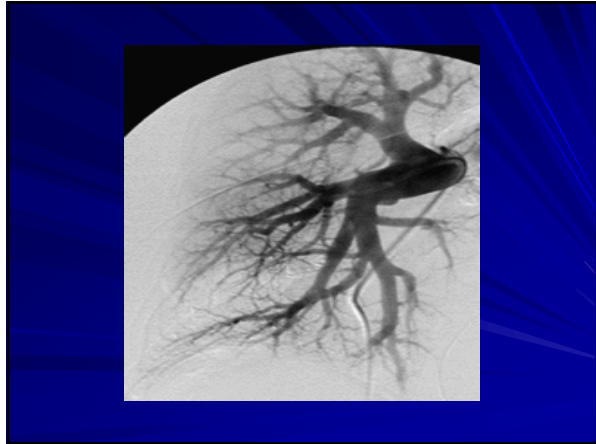


Postprocedural radiograph after Swan-Ganz placement.

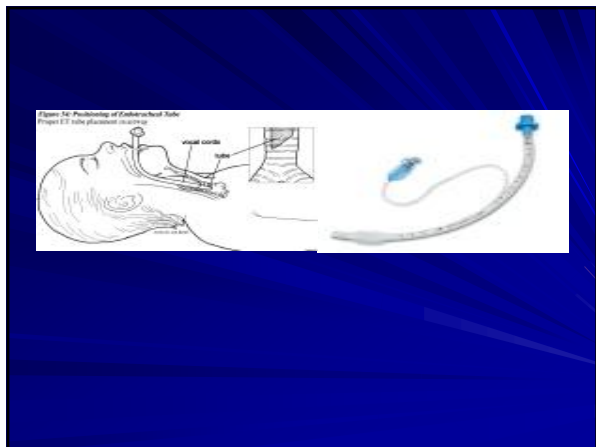


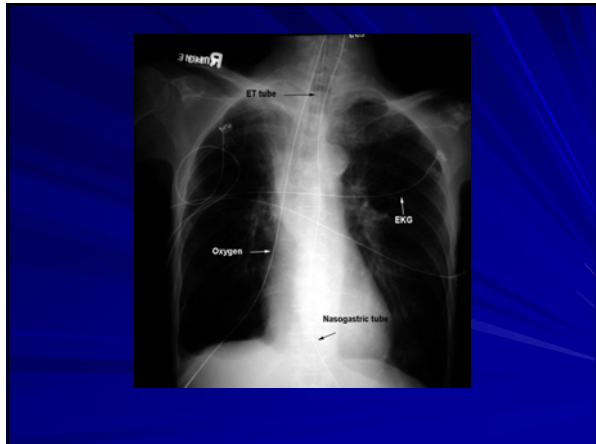














Postplacement endotracheal tube chest radiograph.