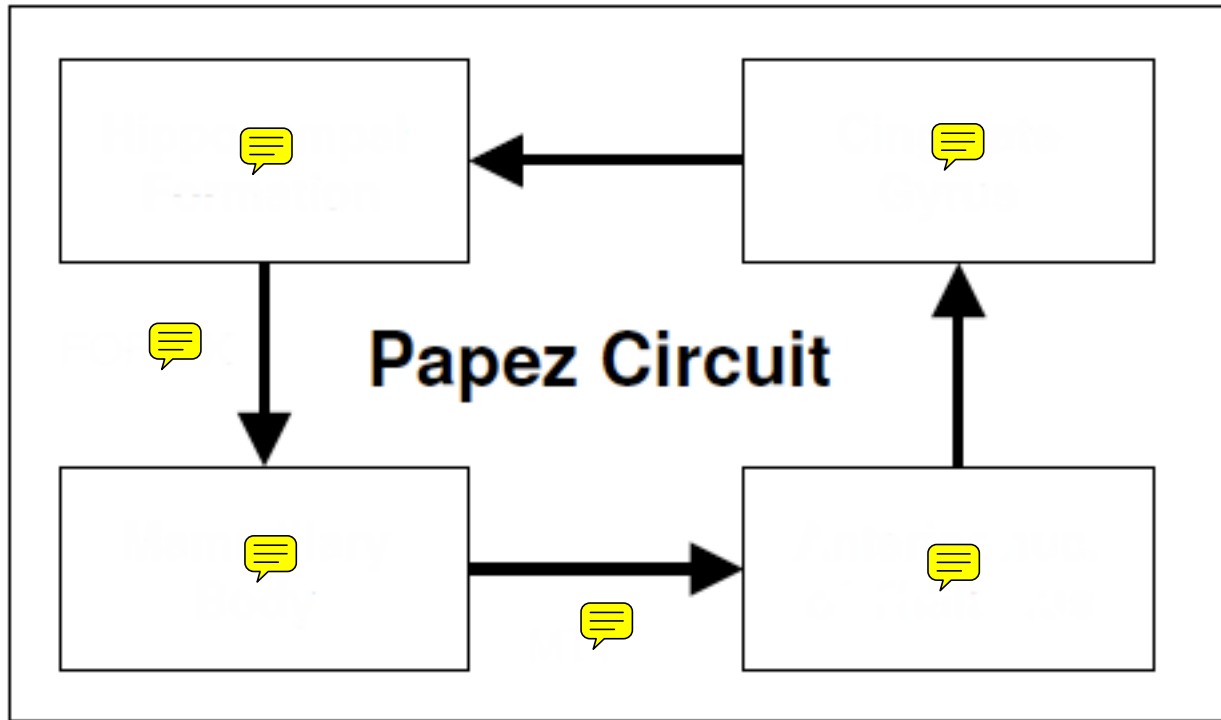
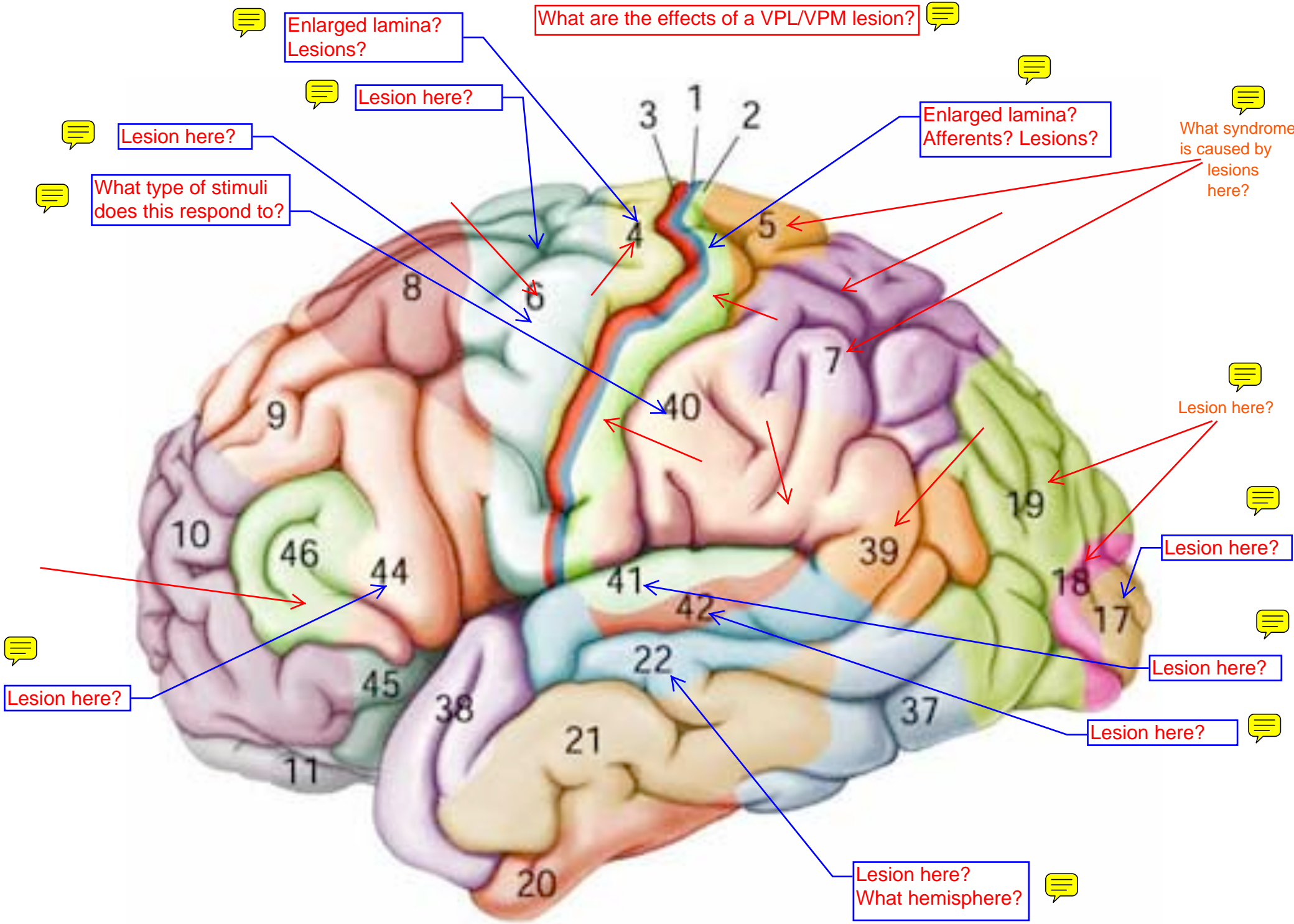


What is the function of the Papez Circuit?





Enlarged lamina? Lesions?

What are the effects of a VPL/VPM lesion?

Lesion here?

Enlarged lamina? Afferents? Lesions?

What syndrome is caused by lesions here?

Lesion here?

What type of stimuli does this respond to?

Lesion here?

Lesion here?

Lesion here?

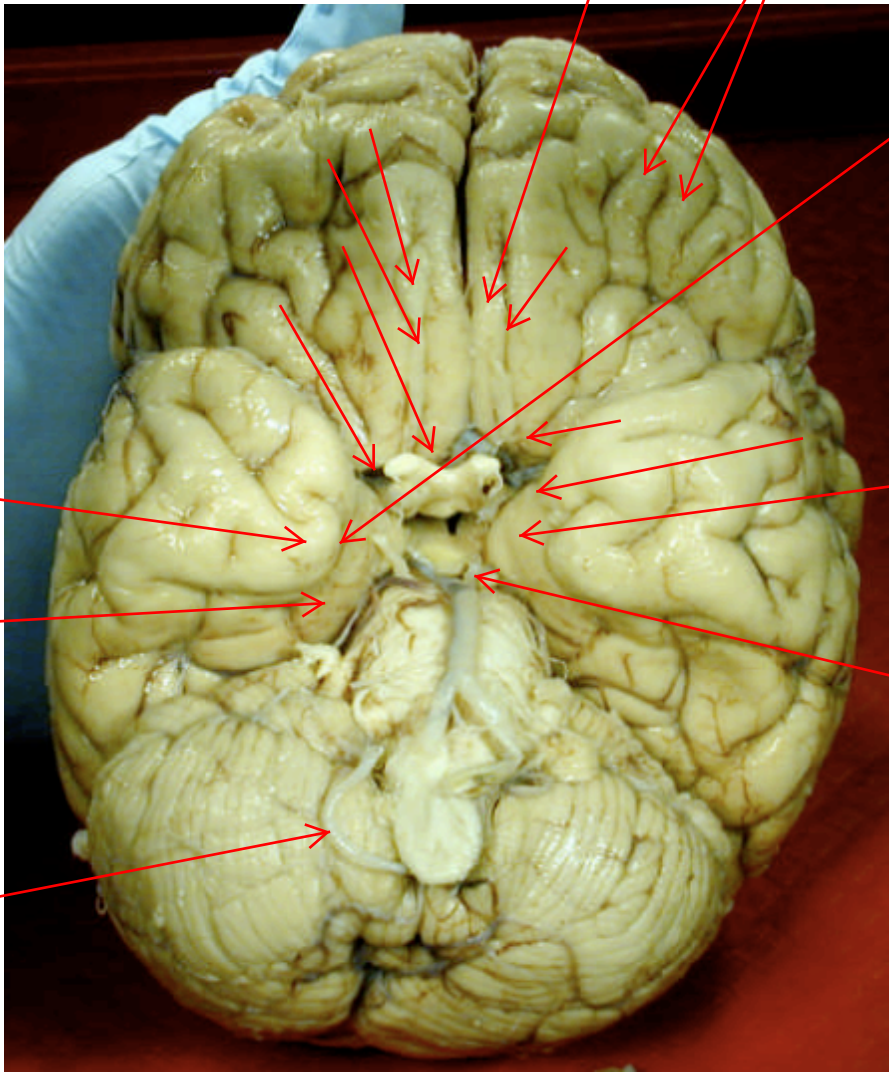
Lesion here?

Lesion here? What hemisphere?

How can you test laterality of language?

How can temporal horn lesions cause vision deficits?

What does bilateral damage to visual area V4 cause?



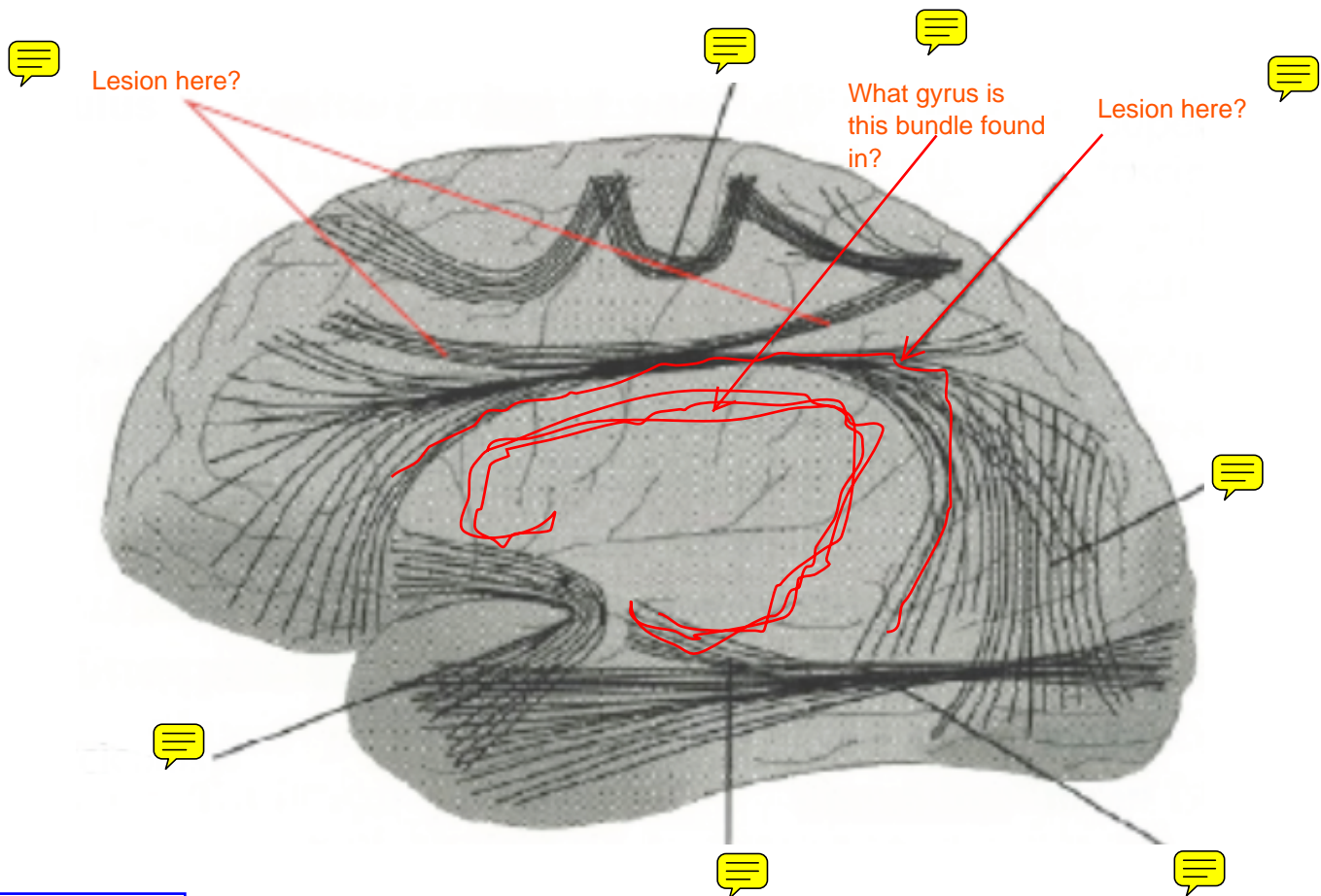
Lesion here?

Sulcus?

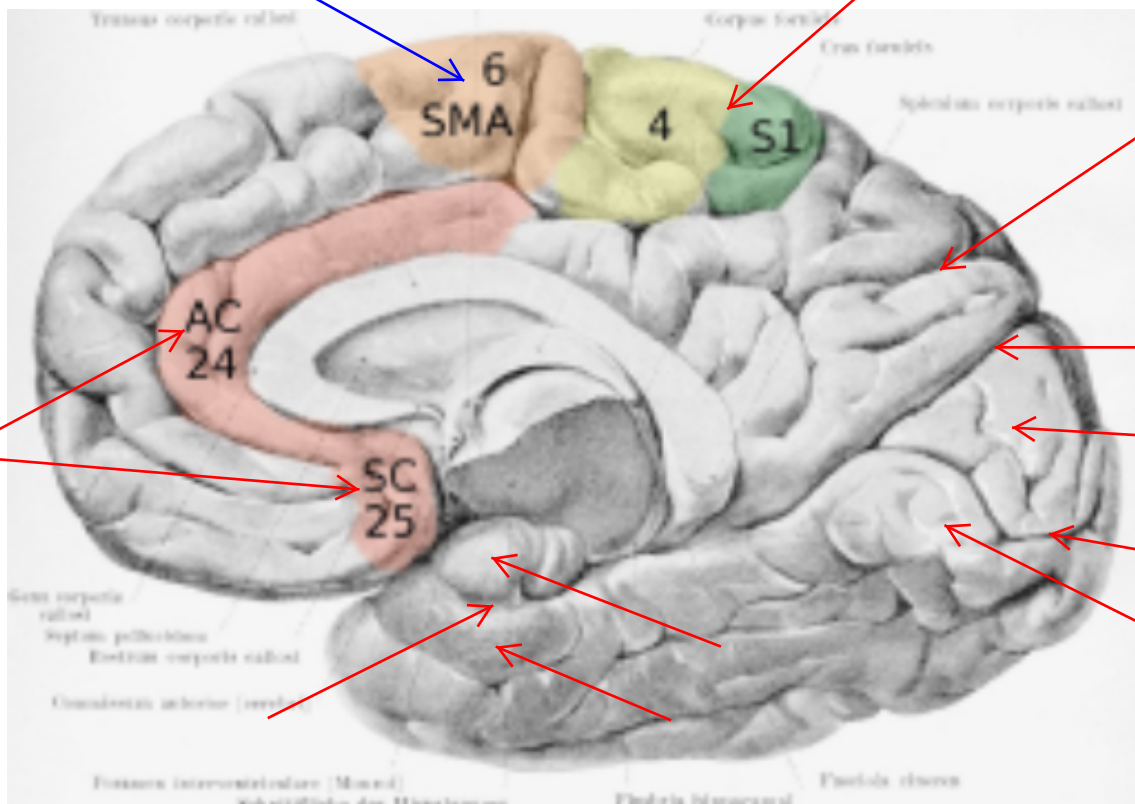
Arises from what gyrus?

Lesion here?

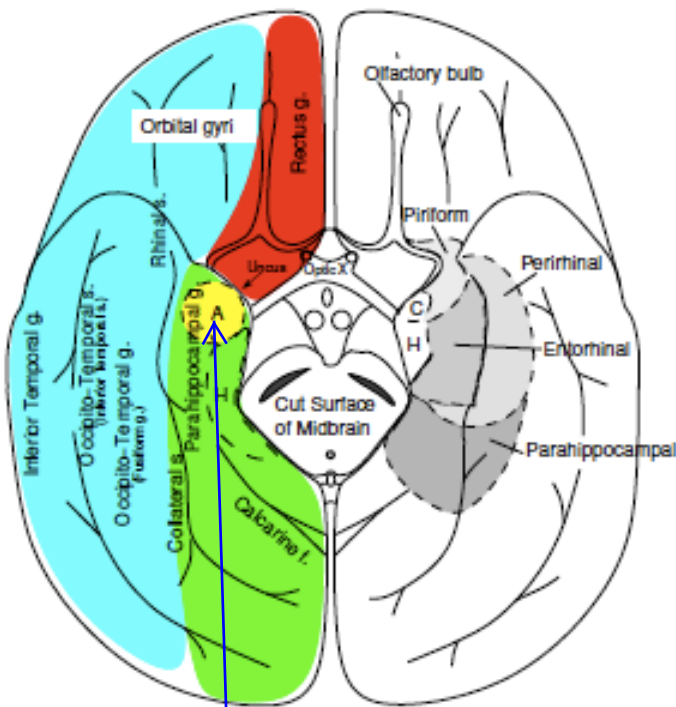
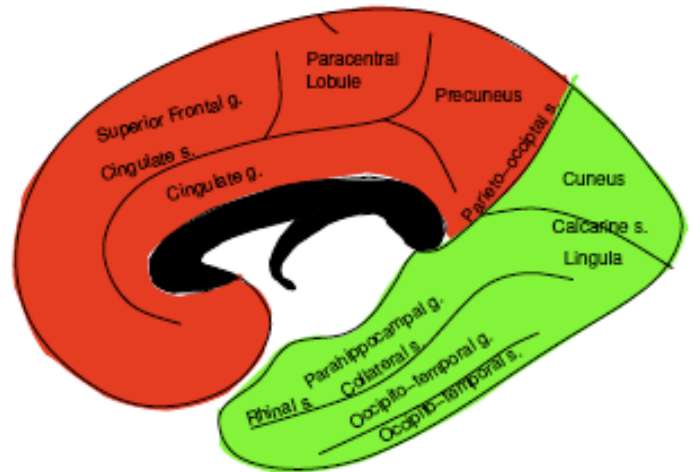
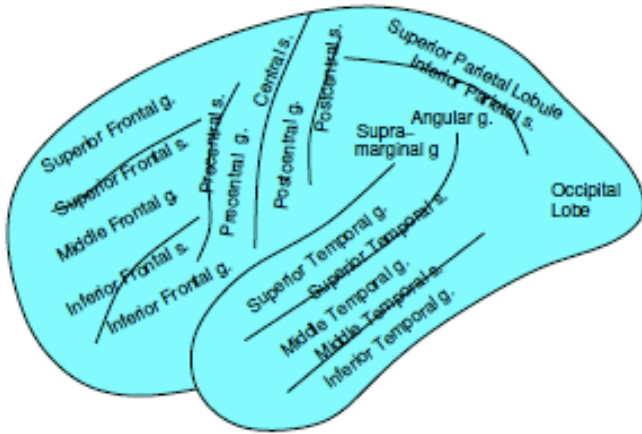
What is found deep to this gyrus?



What thalamic nuclei activate this?



Cerebral Circulation Territories

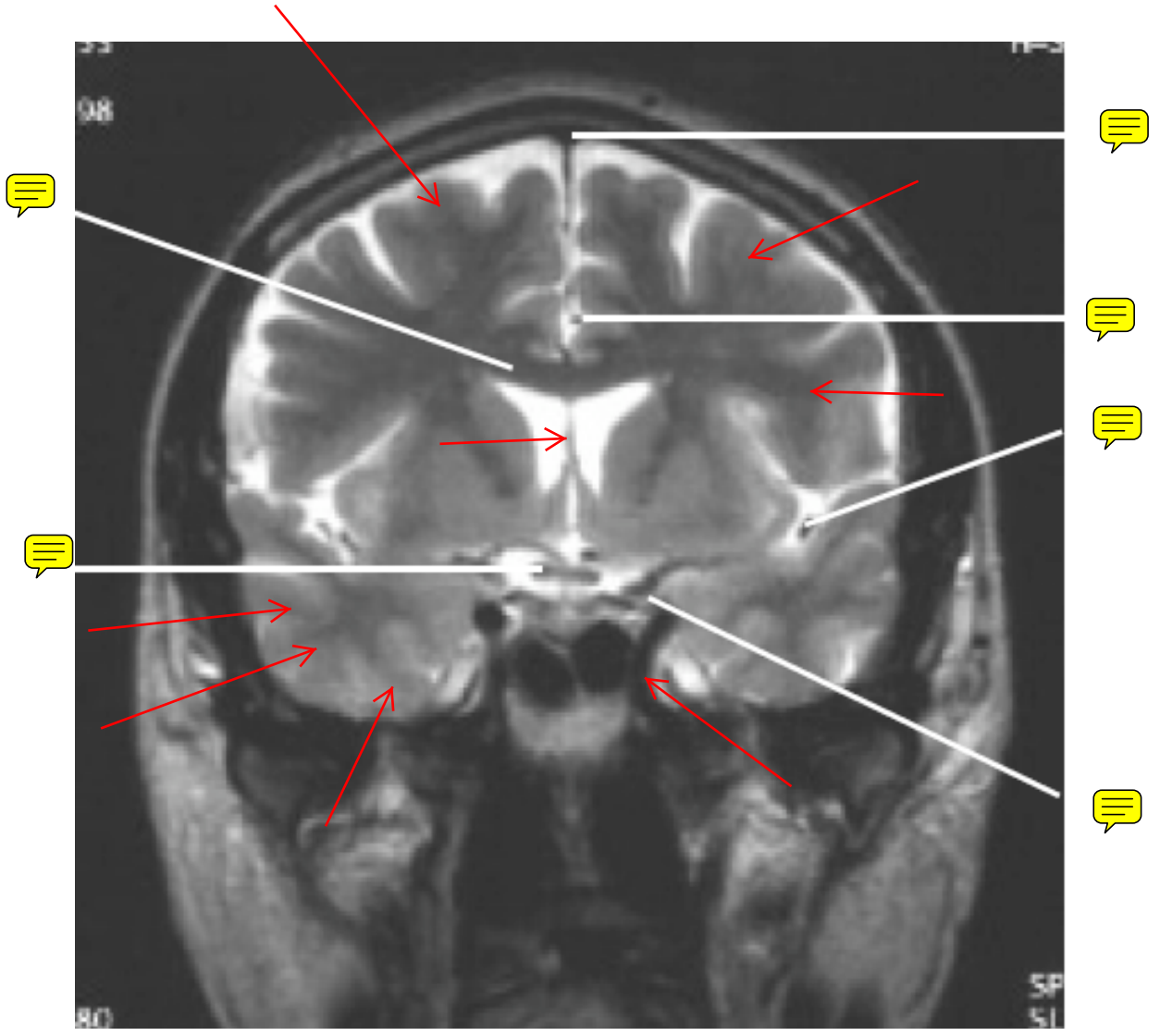


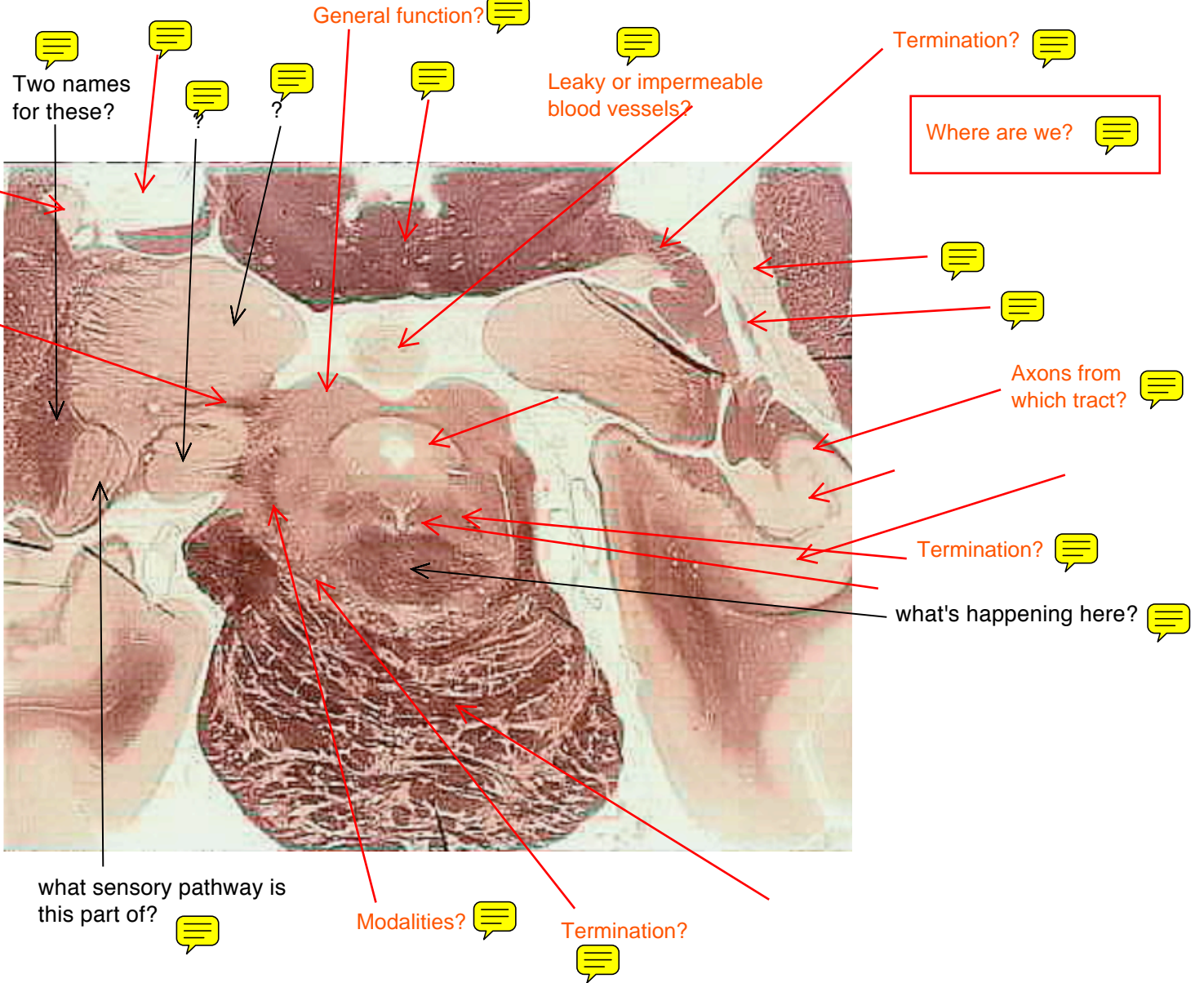
What artery supplies the uncus?



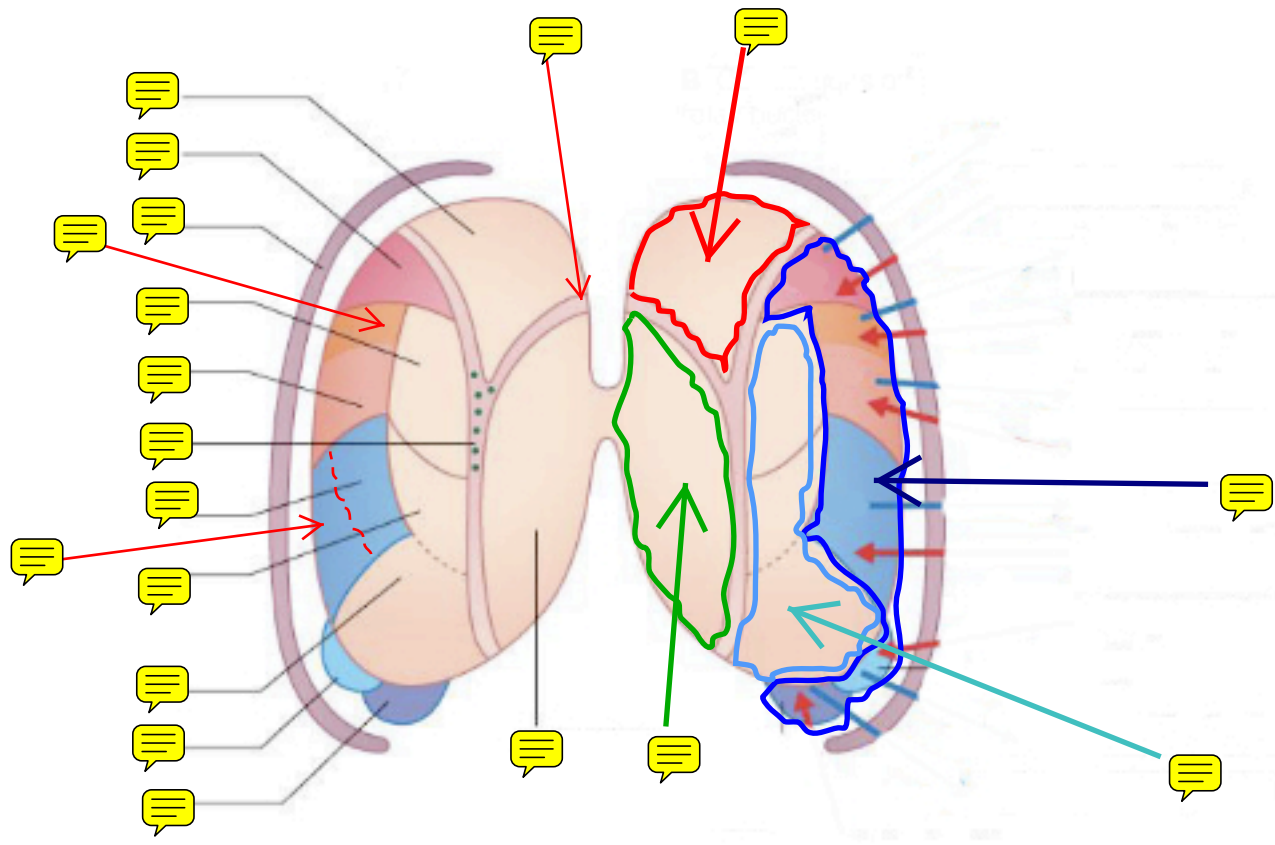
- 1) What deficits result from occlusion of the MCA?
- 2) ... the ACA?
- 3) ... the PCA?





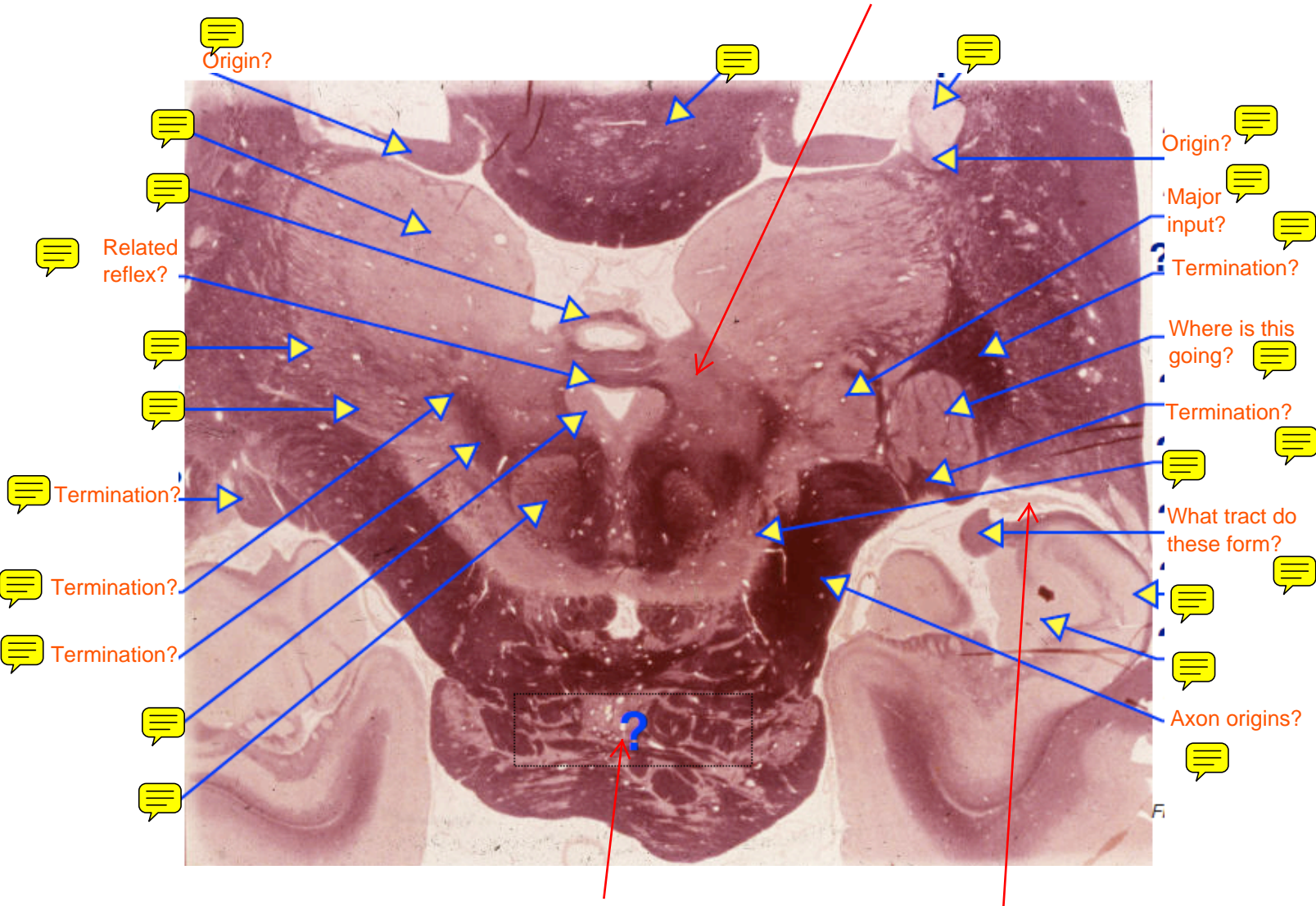


THALAMUS QUIZ

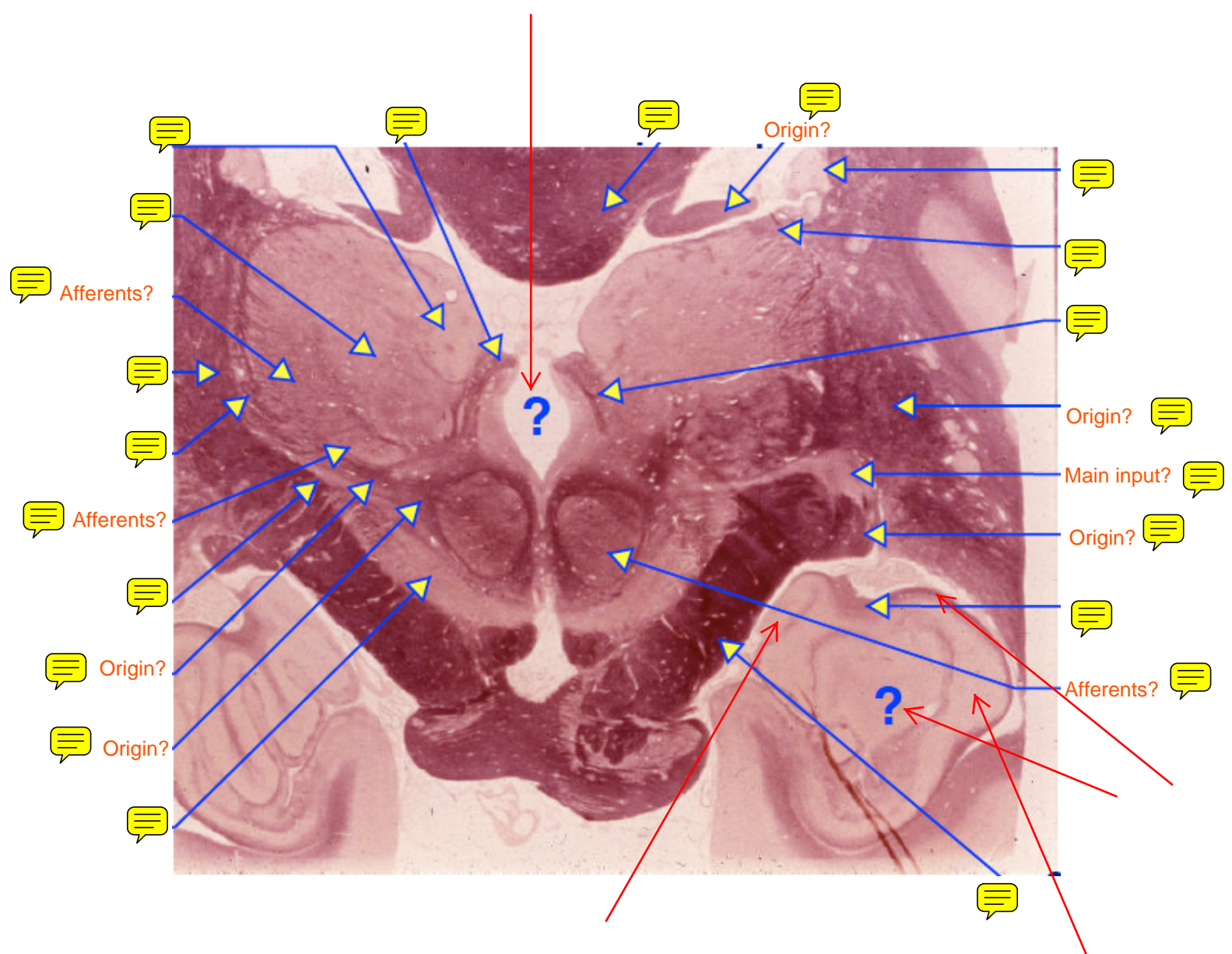


- 1) What nuclei compose the Specific (or Relay) Nuclei group? The Association Nuclei? The Non-Specific Nuclei?
- 2) What neurotransmitter to the majority of Specific inputs to the thalamus utilize?
- 3) What causes Thalamic Syndrome?

Ex: Man loses pain, temp, vibration and position sense on right side of body overnight... but strength, reflexes, visual function, and cranial nerves (aside from trigeminal) are intact... where is the lesion, what is the cause?

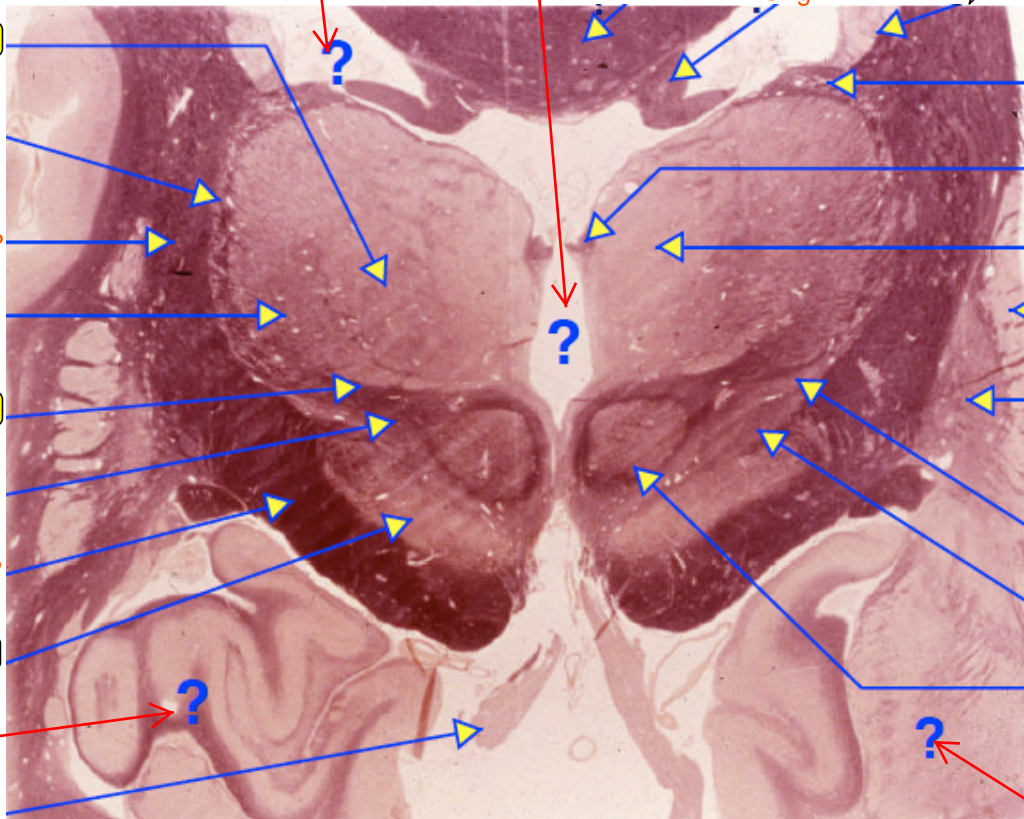


LAST LEVEL CONTAINING STT



When you see the third ventricle, NO MORE STT

SUPERIOR COLLICULUS AND LATERAL GENICULATE BOTH HAVE 6 LAYERS



Origin?

Main target?

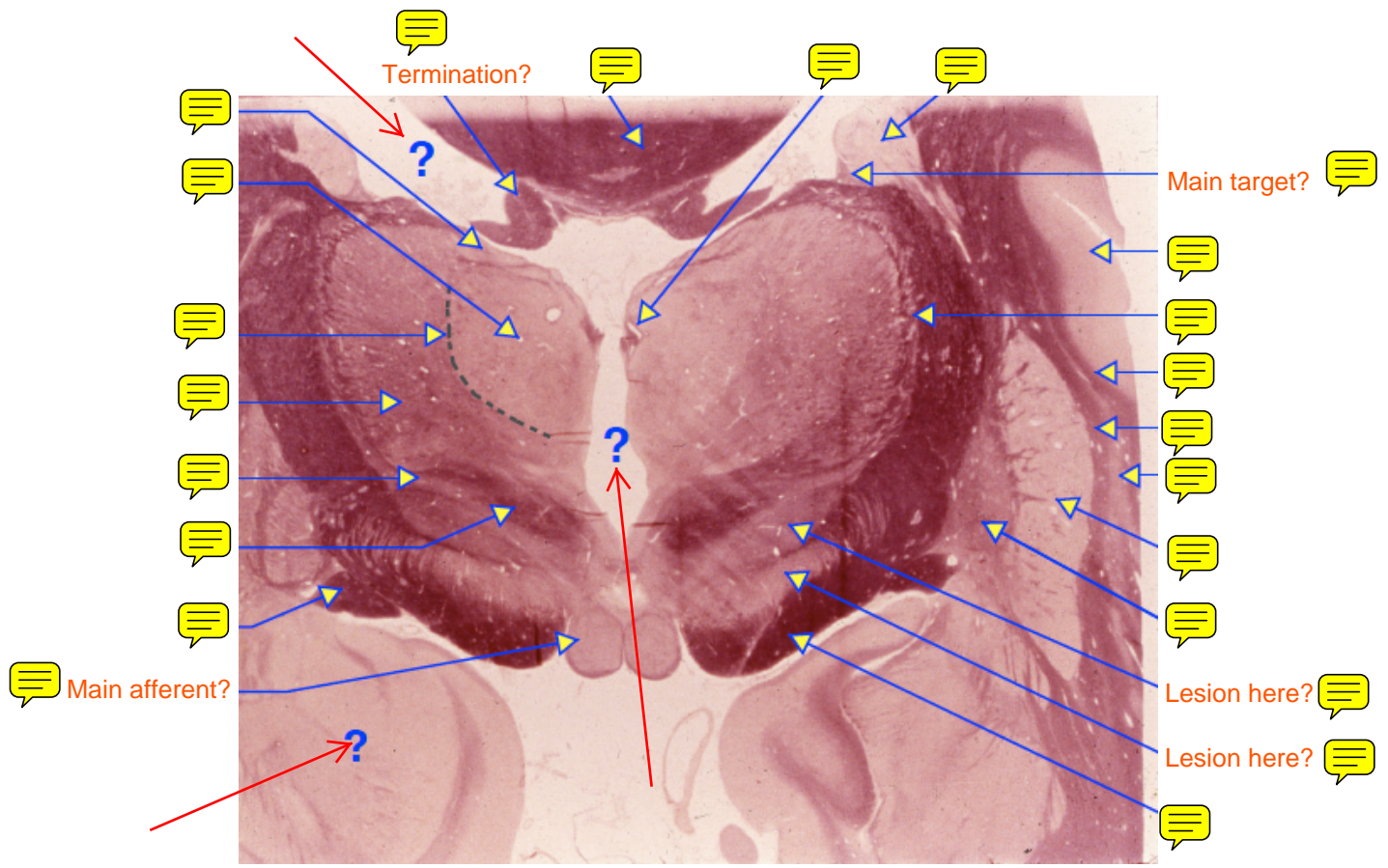
Which limb is this?

Termination?

Termination?

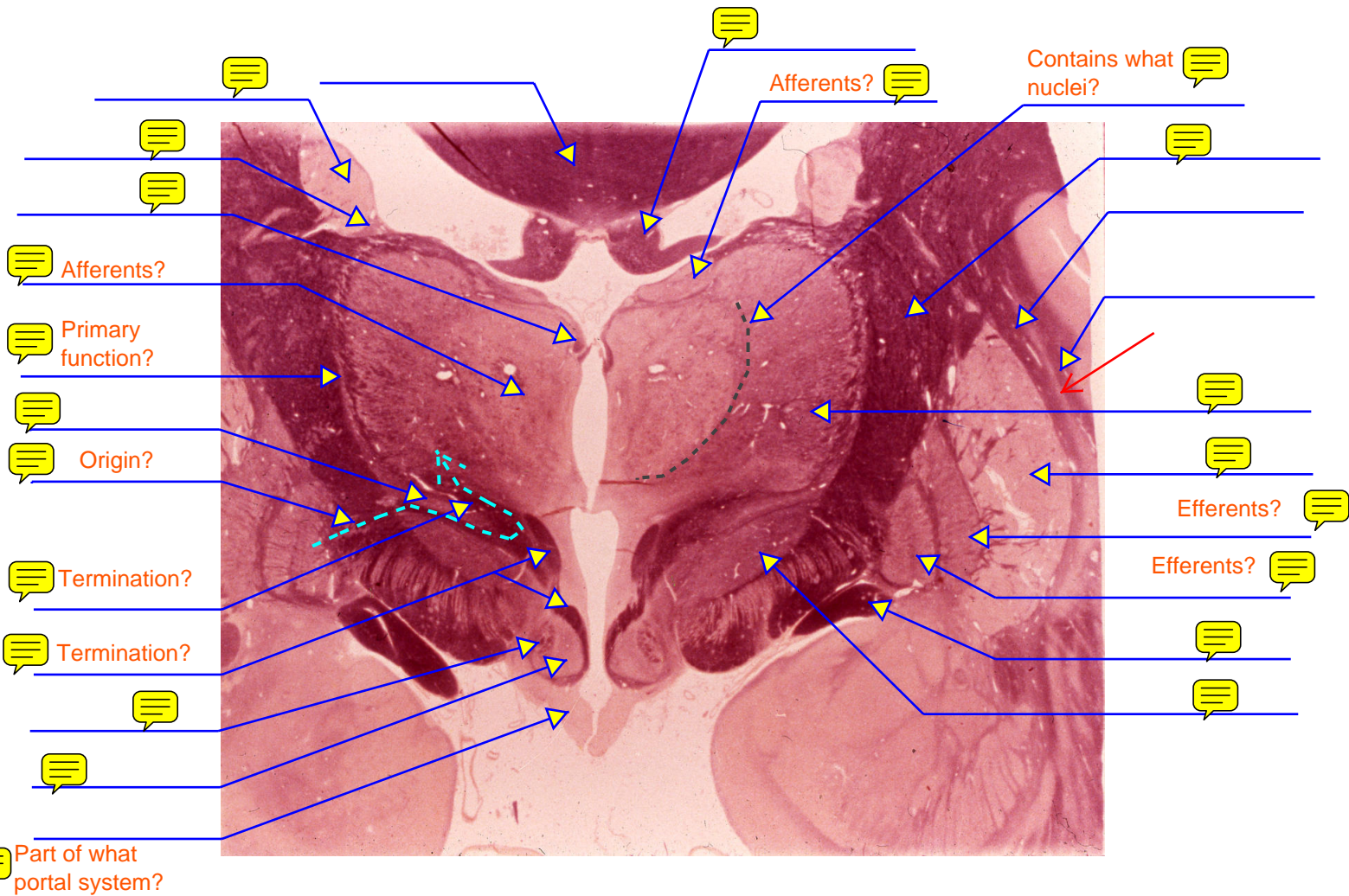
Functional components?

F




When you see mammillary bodies, the lateral dorsal nucleus is present... and the thalamic fasciculus

Where are we? 

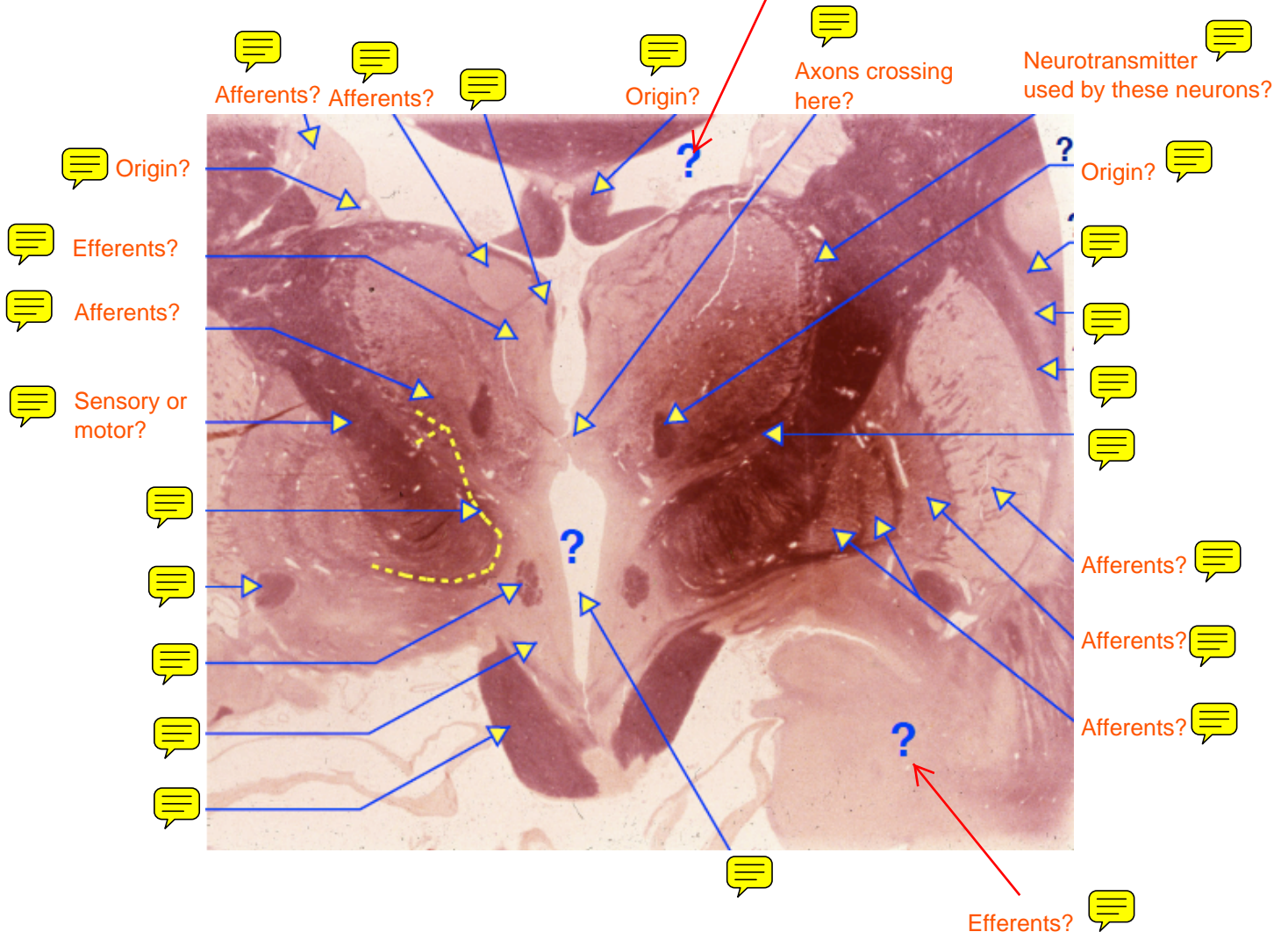


Presence of Mammillothalamic Tract means NO SUBSTANCIA NIGRA -- Subthalamic Nucleus just got huge.
Lenticular fasciculus running OVER the subthalamic nucleus.

Where are we? 

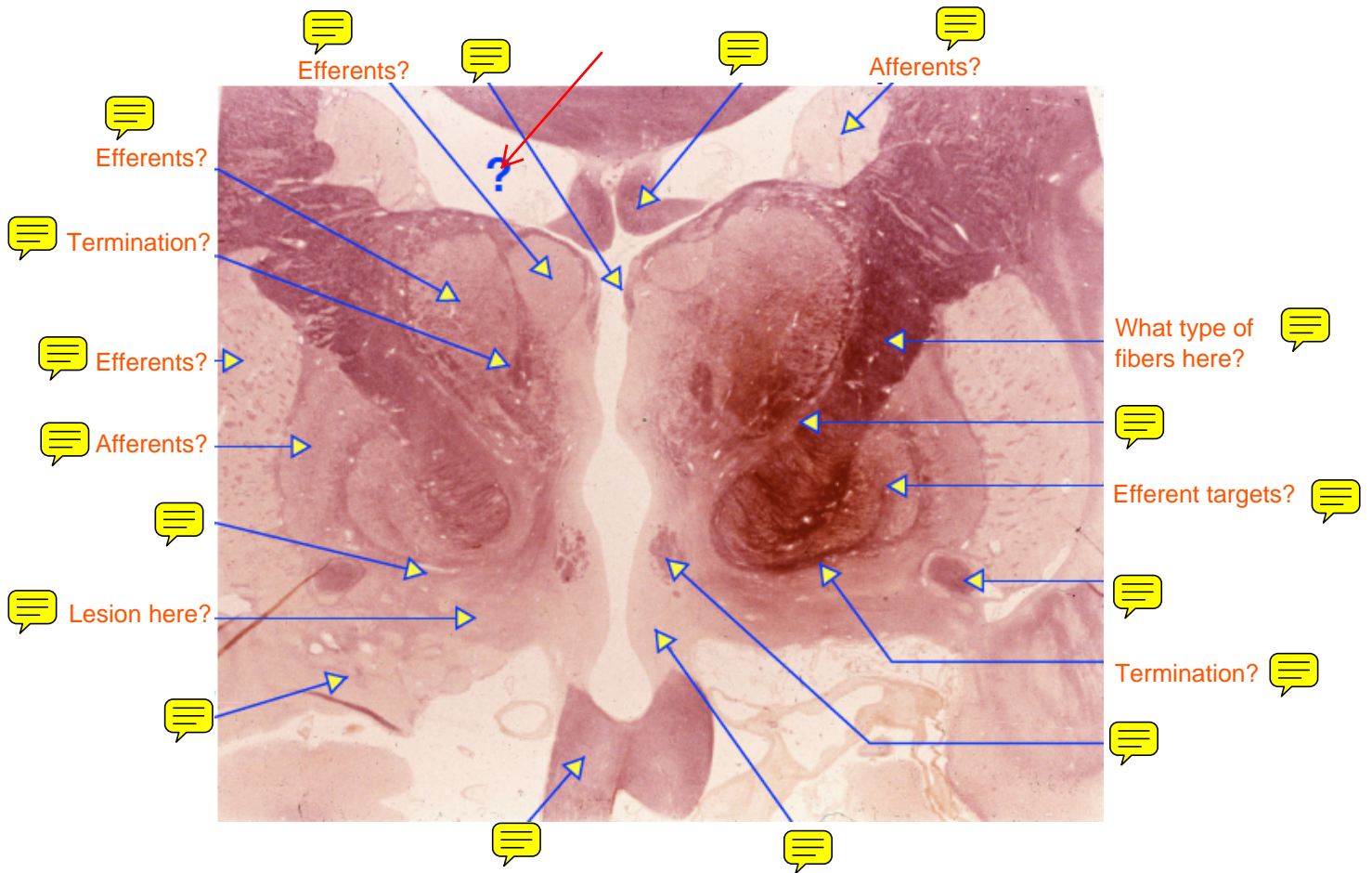


If this enlarged (ie hydrocephalus), what structures could be impacted that would cause falling and a gait disorder?




•What are the symptoms of a lesion of the posterior "limb" of the internal capsule? What arteries could be blocked to cause this? 

•What tracts are carried in the anterior limb of the internal capsule?

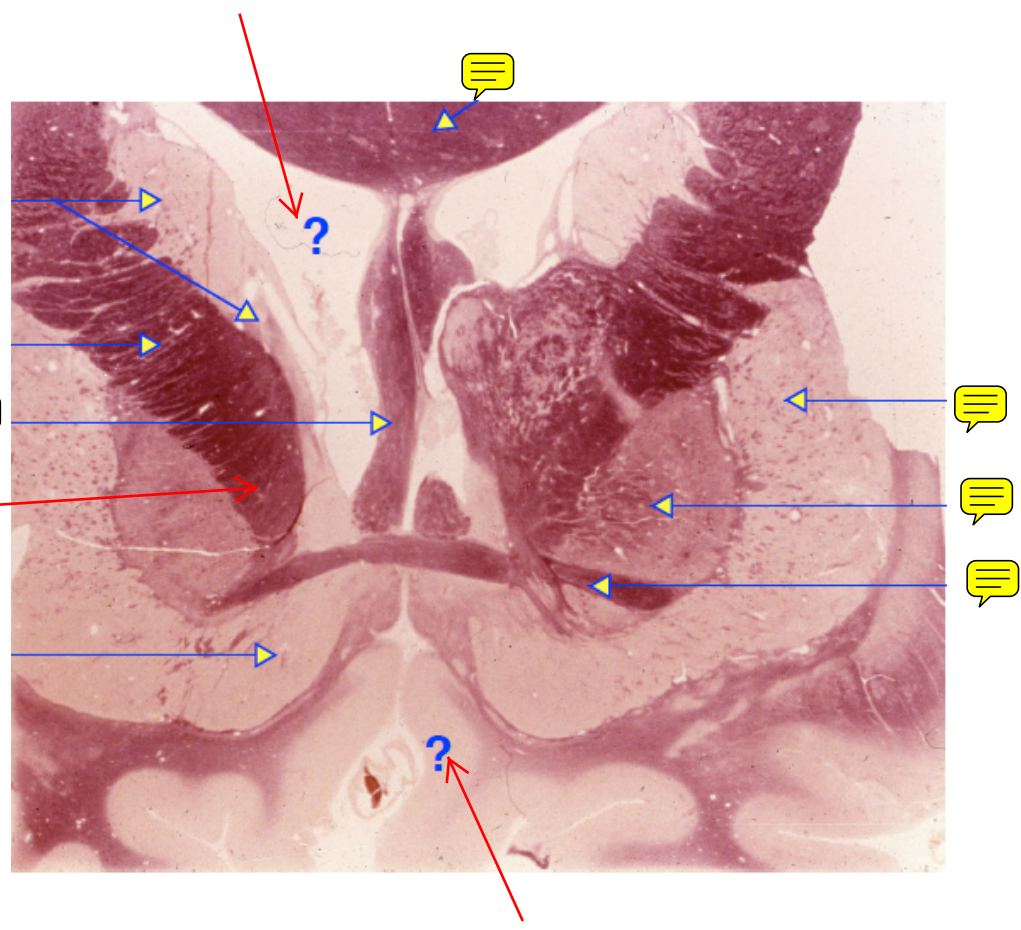


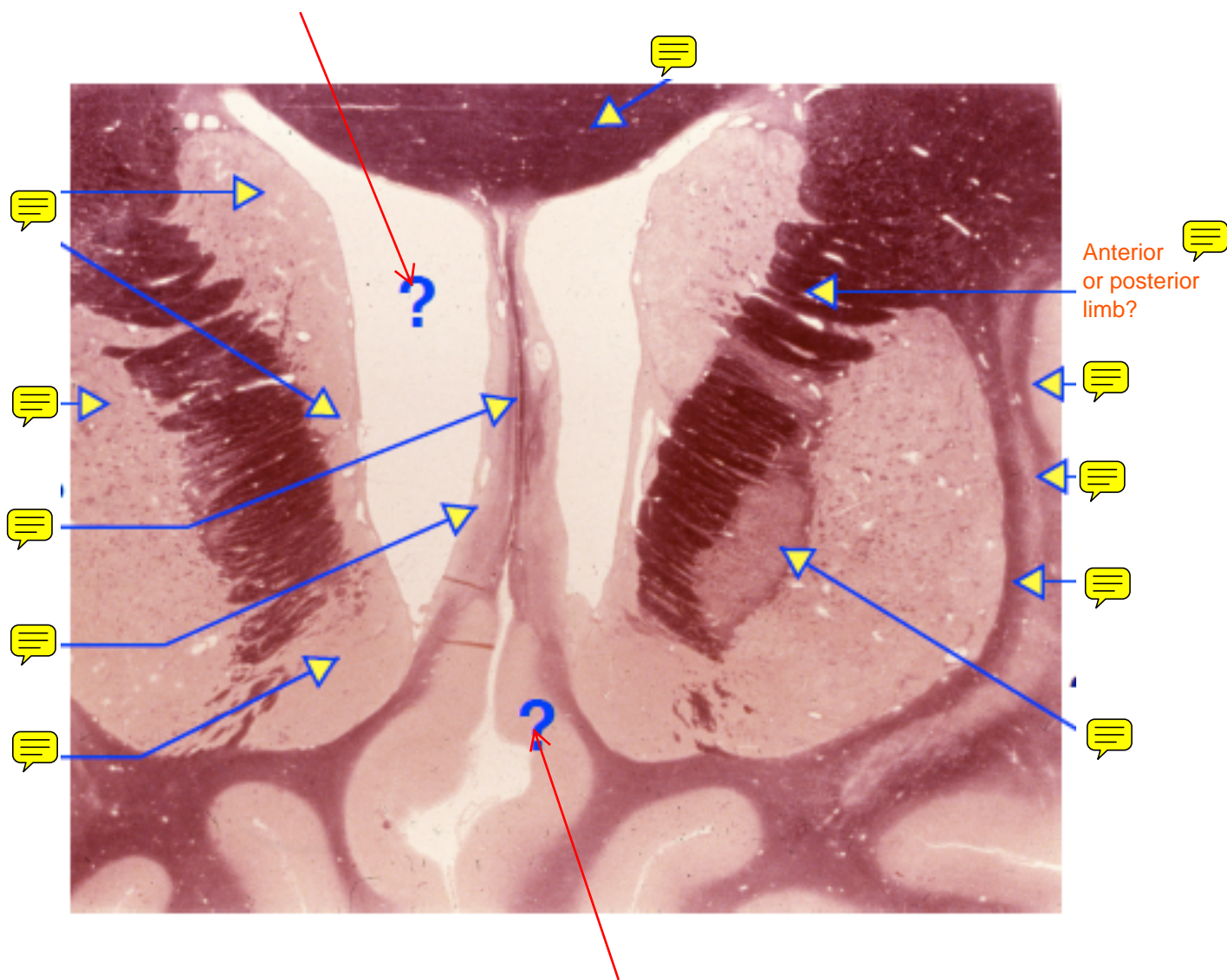
Fornix twice + no mammillaries + optic chiasm = VA, Anterior, Nucleus Basalis of Meynert


Where are we? 


Lesion here is associated with what disease?

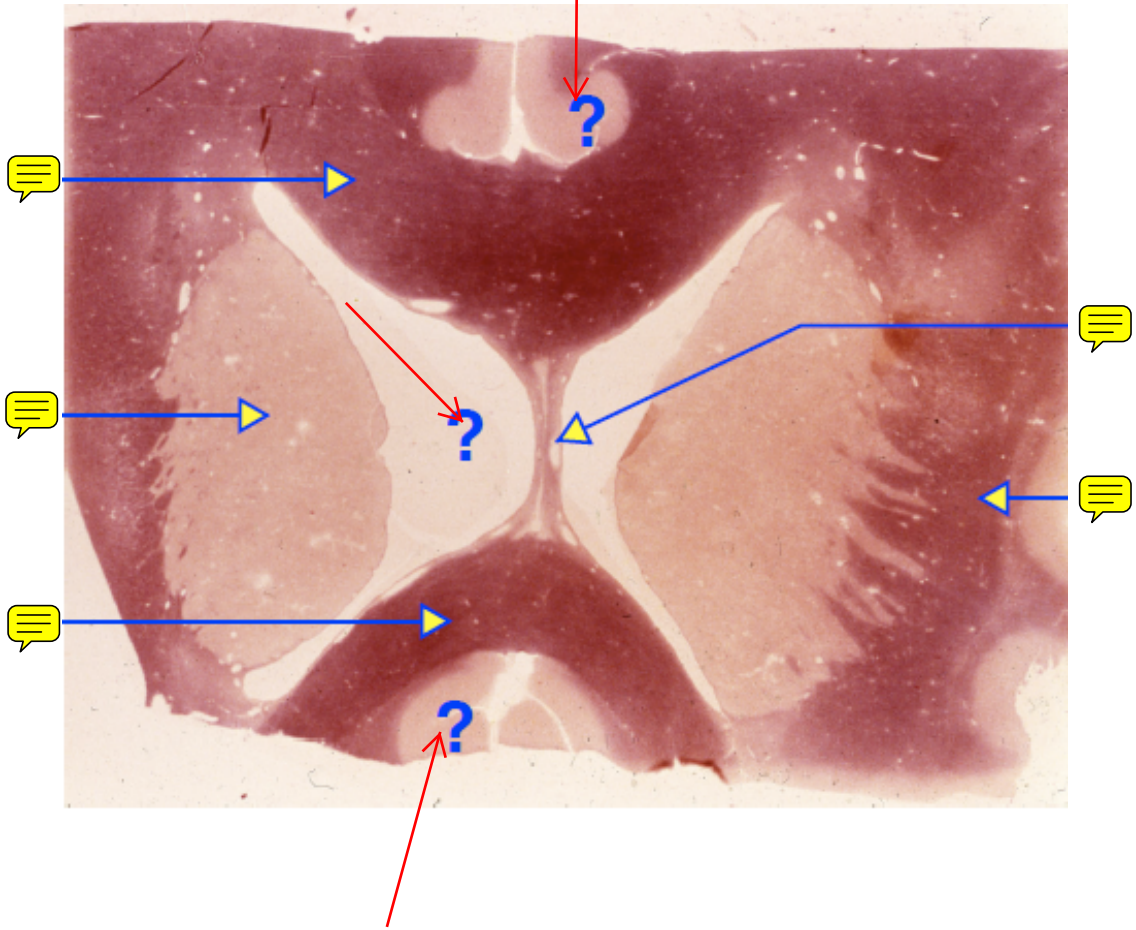
 Anterior or posterior limb?




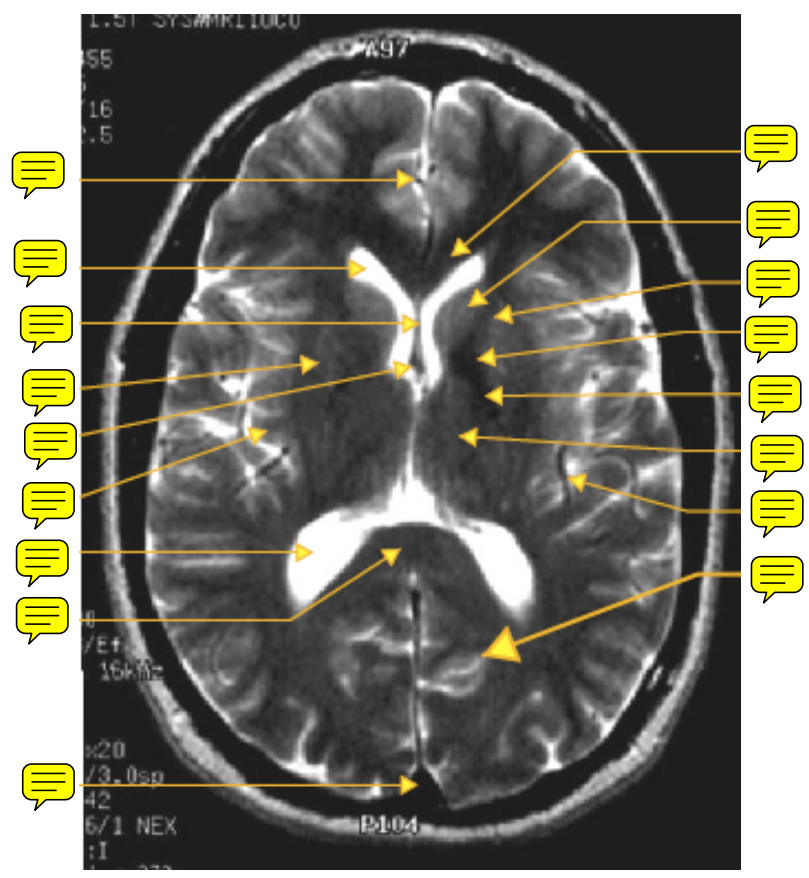
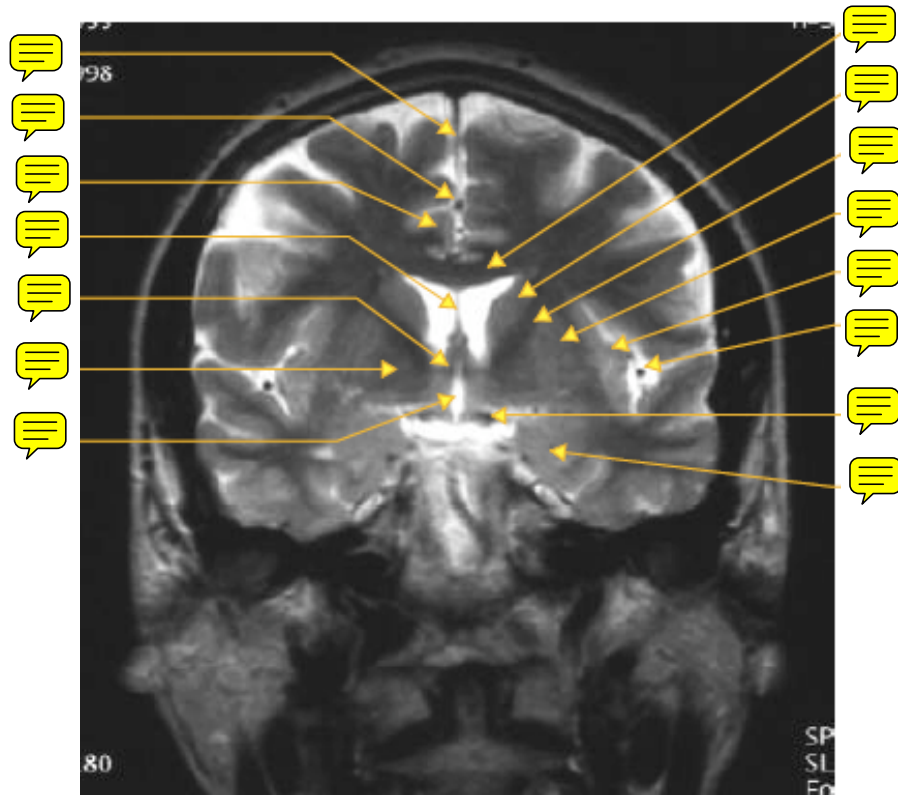


Where are we? 

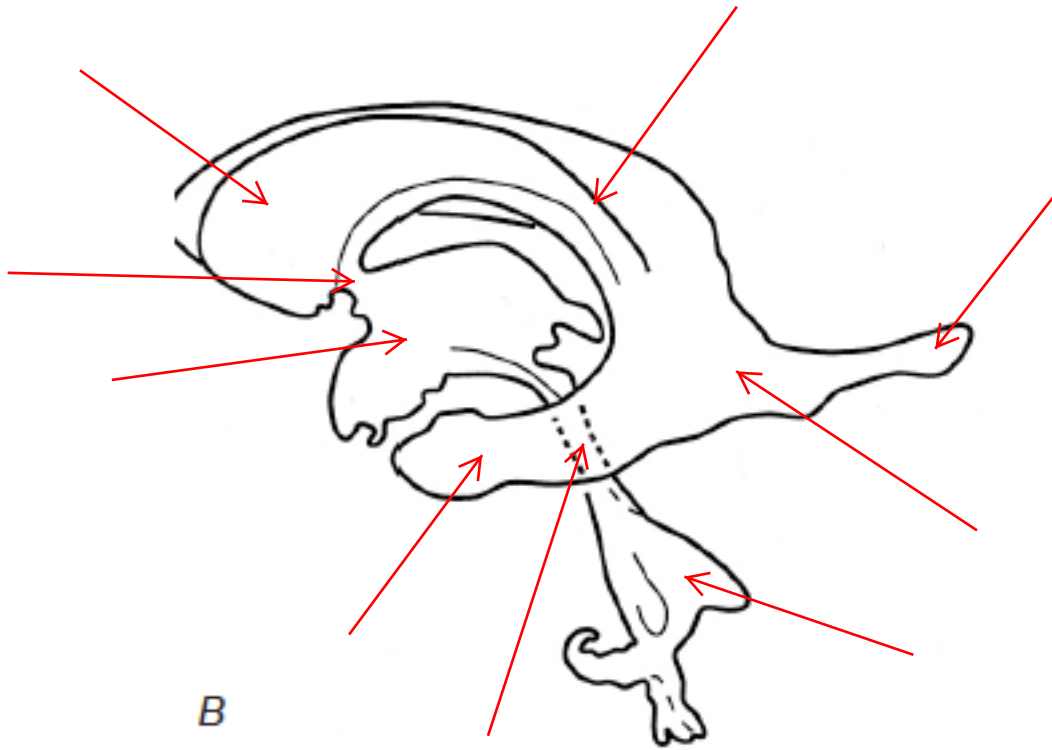

Thalamic afferent?



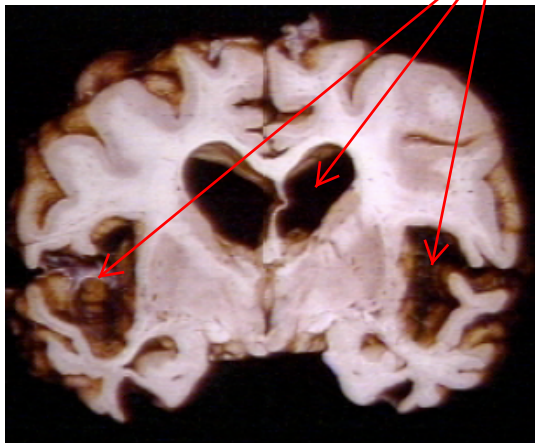
What kind of scan is this? 



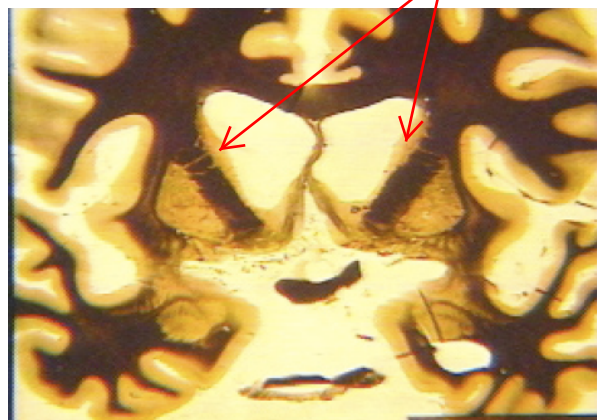
What parts of the lateral ventricle contain choroid plexus? 



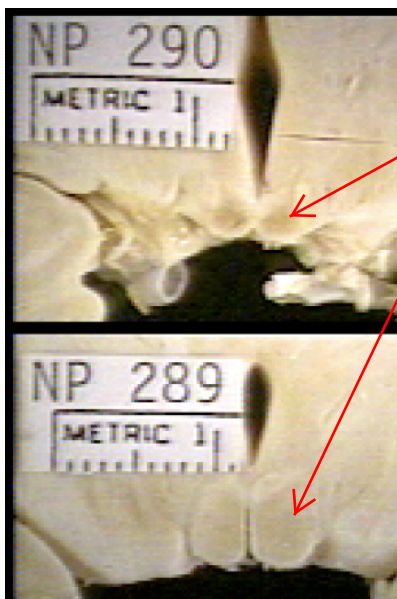
What disease process is occurring here?



What disease is causing this?

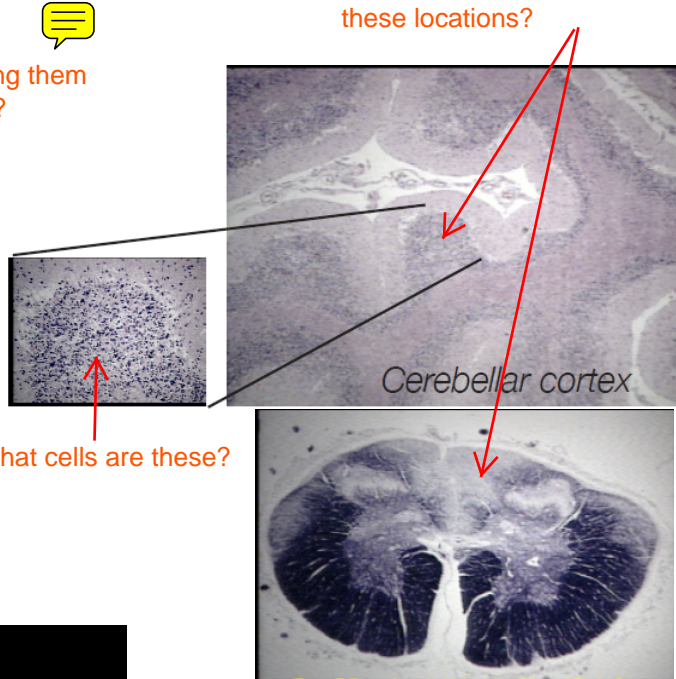


What are these?
What is causing them to get smaller?

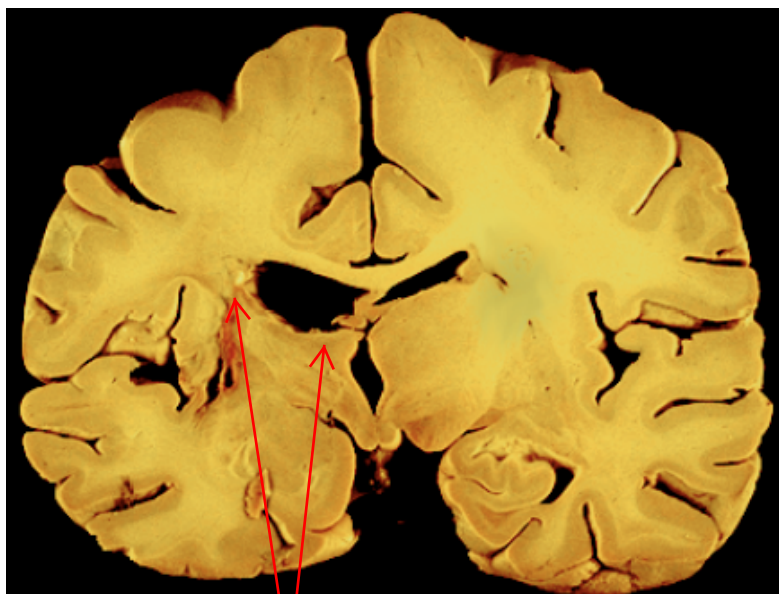


What disease causes damage to both of these locations?

What cells are these?



What happened here?



Infarct of what artery caused this?
What symptoms will this cause?

