



# HOPE INTO LIFE

---

Eric Price D.M., M.Div., BCC  
Hospital Development, Pediatrics

---

# Our Time Together Today

- Gift of Hope: Who we are and what we do
- The critical need for organ and tissue donation
- Regulatory support for organ and tissue donation
- The organ and tissue donation system
- Organ donation process
- Tissue donation process
- Obstacles to organ and tissue donation success
- Your role in the process

# About Gift of Hope

- Federally designated not-for-profit organ procurement organization
- Serves 12 million people in Illinois and northwest Indiana
- Coordinates organ and tissue donation with 180 hospitals in Illinois and northwest Indiana
- Works with nine transplant centers
- Provides professional and public education
- Provides ongoing support for donor families



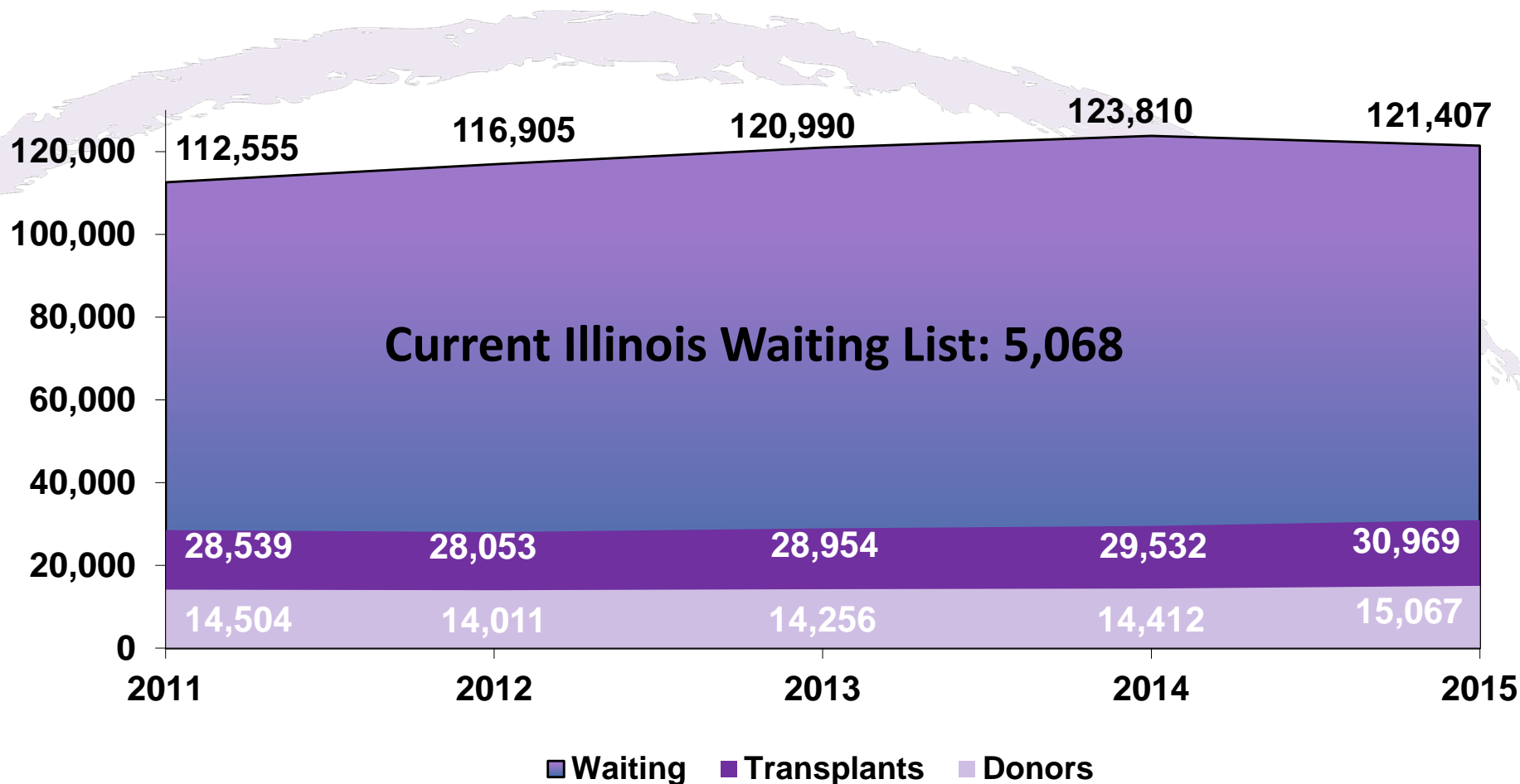
# Donation is Critical

- More than 121,000 people in the U.S. are waiting for a lifesaving organ transplant.
- More than 5,000 people are waiting for an organ transplant in our donation service area.
- Last year, nearly 300 people in Illinois died while waiting for a lifesaving organ transplant.



**Efrain, liver transplant recipient,**  
lives a happy, healthy life today.

# Thousands Are Waiting



Source: United Network for Organ Sharing

Note: 2015 national Waiting List, Transplants and Donors data is through YE 2015. Illinois Waiting List data is through 2/15/16. All data is subject to change based on future data submission or correction.

# Regulatory Support for Donation

## Centers for Medicare & Medicaid Services (CMS)

- Requires hospitals receiving Medicare funds to call designated OPO on every death and imminent death.
- Makes OPOs responsible for screening patients to determine medical suitability for donation.
- Limits requestors to OPO representatives or trained designees.

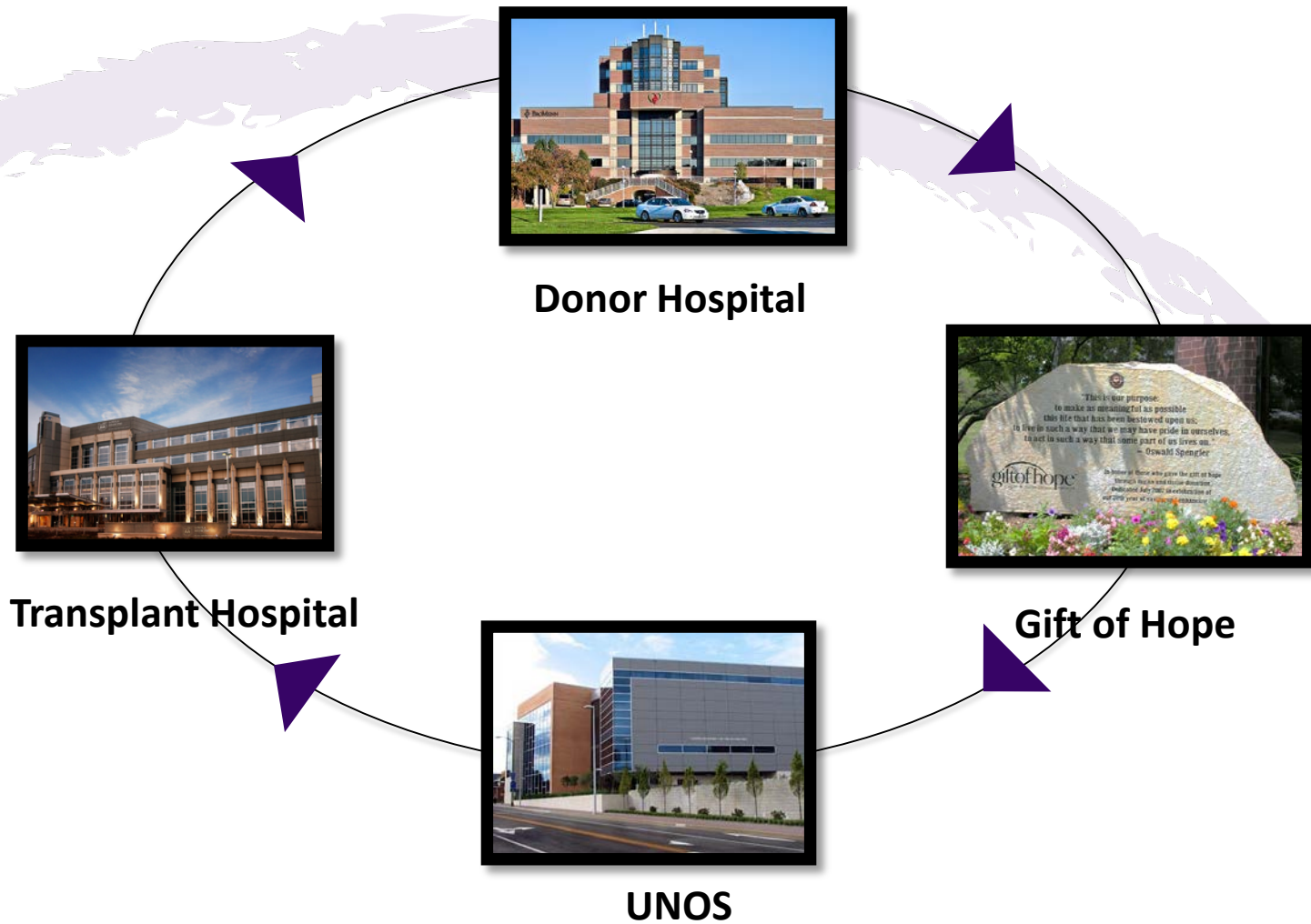
## Health Insurance Portability and Accountability Act

- Gift of Hope is a covered entity under HIPAA standards, which permits us to gain access to confidential patient information.

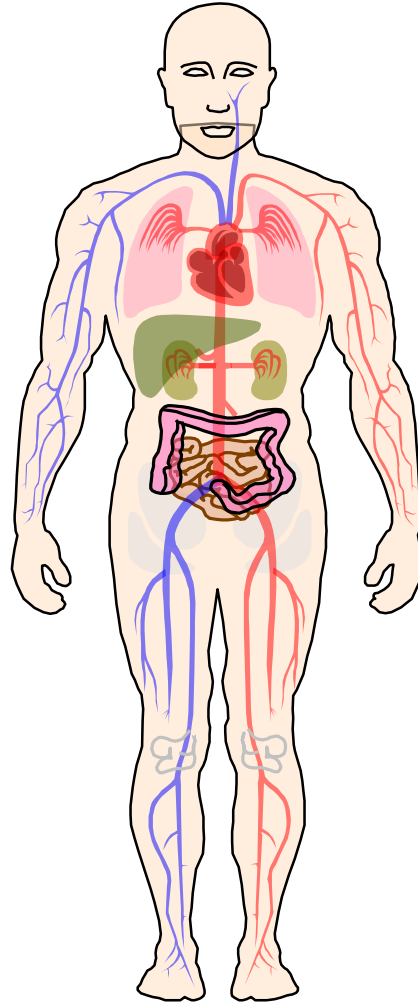
## Donor Registries

- Individuals can register their legally binding decisions in the Illinois Organ/Tissue Donor Registry or the Indiana Donor Registry.

# The Donation and Transplantation System

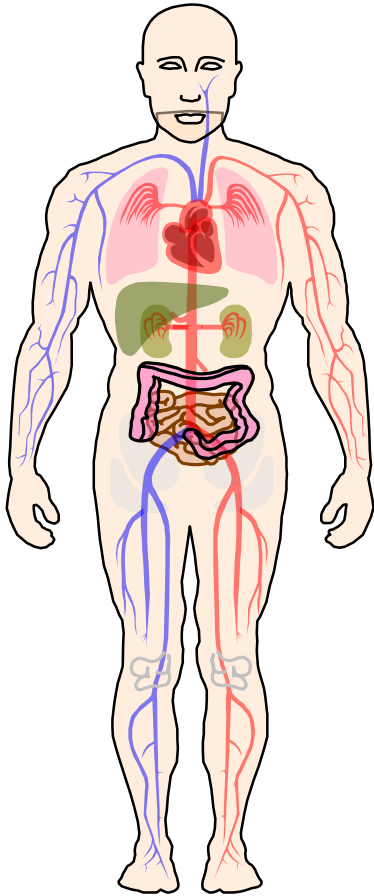


# Organ Donation





# Why Donated Organs Are Needed



**Heart:** Heart disease—congenital, hypertensive cardiomyopathy

**Lungs:** COPD, emphysema, cystic fibrosis

**Liver:** Chronic hepatitis, liver tumors, cirrhosis

**Pancreas:** Type 1 diabetes

**Kidneys:** Hypertension, diabetes, polycystic kidney disease

**Intestine:** Short bowel syndrome

# Every Referral Counts

- Less than 2% of hospital patients die from types of injuries/illnesses that make them potential organ donors
- Donations do not occur in about 85% of these cases:
  - Patients deemed medically ineligible
  - Family declines to give donor authorization/changes mind
  - Other reasons
- Only 15% of referrals become potential organ donors!
- ***That's why every referral counts!***

# Two Organ Donation Scenarios:

## DBD

### Donation After Brain Death

- Neurological exam consistent with brain death
- Brain death declared by hospital physician
- Organs tested, placed for transplant
- Patient transferred to hospital OR and remains on ventilator with intact heart rate and blood pressure until organs are recovered

# Two Organ Donation Scenarios:

## DCD

### Donation After Circulatory Death

- Neurological exam *not* consistent with brain death; withdrawal of life-sustaining therapies planned
- Organs tested, placed for transplant
- Life-sustaining therapies withdrawn and comfort care ordered by hospital physician
- Organs recovered in hospital OR after circulatory death declared by hospital physician

# Identification and Referral

## Continue treatment

- Maintain hemodynamic stability to ensure that donation remains an option.

## Make the referral: Call 800/545-GIFT (4438)

- Within one hour of identifying ventilator-dependent patient with non-survivable illness, neurologic injury.
- Immediately if patient loses any neurological reflexes.
- Immediately if the removal of life-sustaining therapy—including pressor support—is being considered and death is likely to occur.

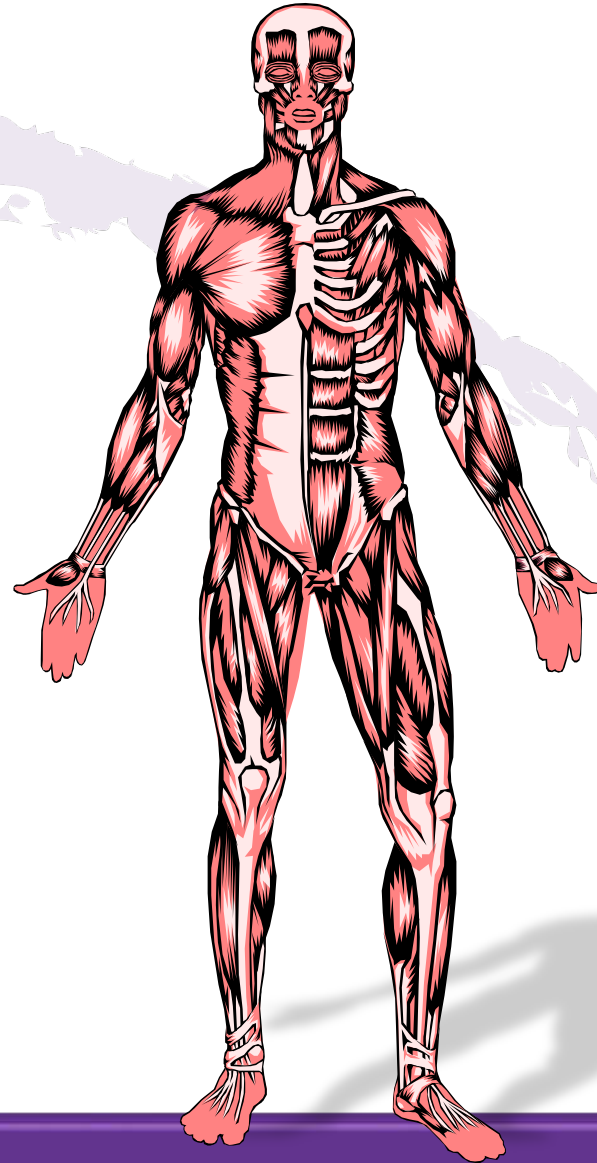
Maintaining  
donation  
opportunity

Timely  
referrals  
and  
evaluation

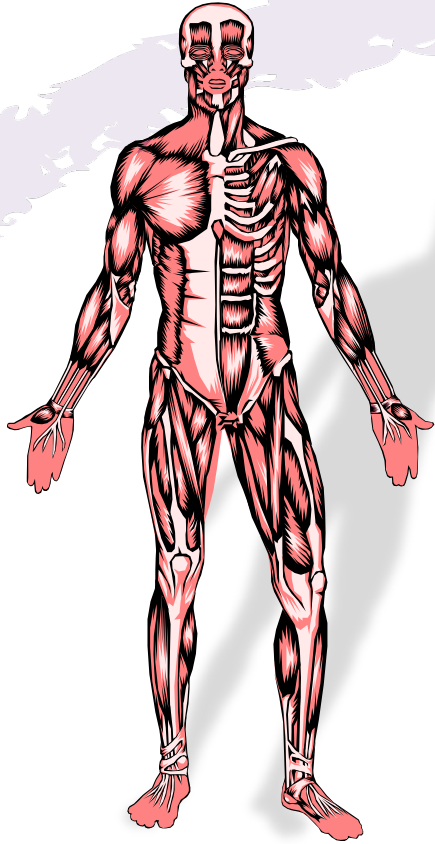
# The Organ Donation Process



# Tissue Donation



# How Donated Tissues Are Used



**Cornea/eye:** Restores sight for patients with corneal damage or disease

**Heart valve:** Replaces heart valve for patients with heart defects, infection or damage

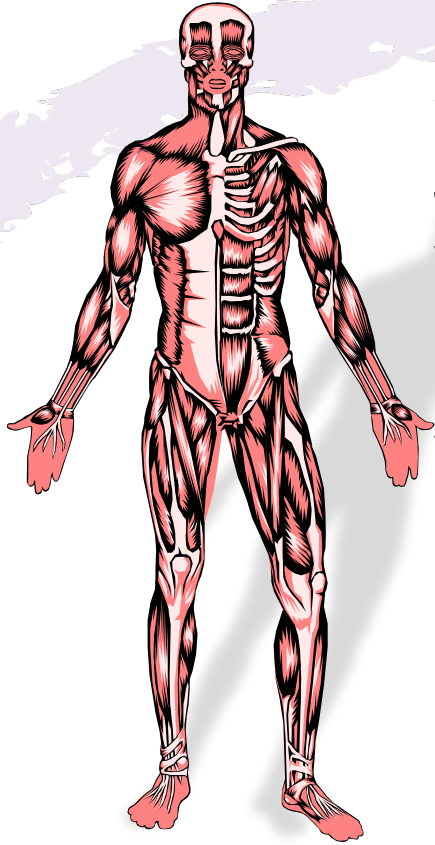
**Bone:** Saves limbs, replaces joints for patients with bone cancer, bone fractures, degenerative diseases

**Soft tissue:** Repairs or restructures injured tendons and ligaments

**Vein:** Replaces femoral or saphenous veins for patients with vascular disease or diseased/blocked arteries—limb-saving measure



# How Donated Tissues Are Used (cont'd)



**Skin:** Skin grafts for patients with severe burns or surgical wounds—lifesaving measure

**Juvenile cartilage:** Promotes healing for patients with cartilage defects caused by disease, stress to knee brought on by physical activity and/or age

**Adipose:** Fatty tissue removed from the abdominal area used to help patients with hard-to-repair injuries like bone fractures

**Costal cartilage:** Soft tissue that connects the ends of the ribs to the sternum; used primarily for functional or structural implants in patients undergoing maxillofacial reconstruction

# When is Tissue Donation an Opportunity?

## Referral and evaluation

### Make the referral

- As soon as possible after death occurs
- Prior to release of the body to a funeral home

### Provide information

- If patient is an eligible donor, give Gift of Hope's tissue donation card to family
- Obtain phone number where family can be reached

## Maintaining donation opportunity

### Administer ocular care

- Apply saline drops to the eyes
- Tape eyes shut using paper tape
- Elevate head
- Cool the eye region with a small ice pack

# Recovery and Case Completion

## Family discussion, authorization

### Await further direction

- Gift of Hope contacts next-of-kin to discuss tissue donation
- Gift of Hope notifies hospital staff of outcome and next steps

### Provide collaborative environment

- Recovery surgery can take place in donor hospital operating room, at Gift of Hope surgical suite or at a coroner/medical examiner facility
- Gift of Hope staff recover tissue and coordinate transport with C/ME and/or funeral home

## Tissue recovery

# The Tissue Donation Process

```
graph LR; A[Referral and evaluation] --> B[Maintaining donation opportunity]; B --> C[Family discussion, donor authorization]; C --> D[Tissue recovery]
```

Referral  
and evaluation

Maintaining  
donation  
opportunity

Family  
discussion,  
donor  
authorization

**Tissue  
recovery**

# Overcoming Donation Challenges

- Lack of identification and/or late referral of potential donors
- Patient's/family's hospital experience
- Caregiver's negative attitudes, actions and beliefs
- Inappropriate physical surroundings  
(where donation conversation takes place)
- Poor communication among organ procurement organization, donor hospital and transplant hospital

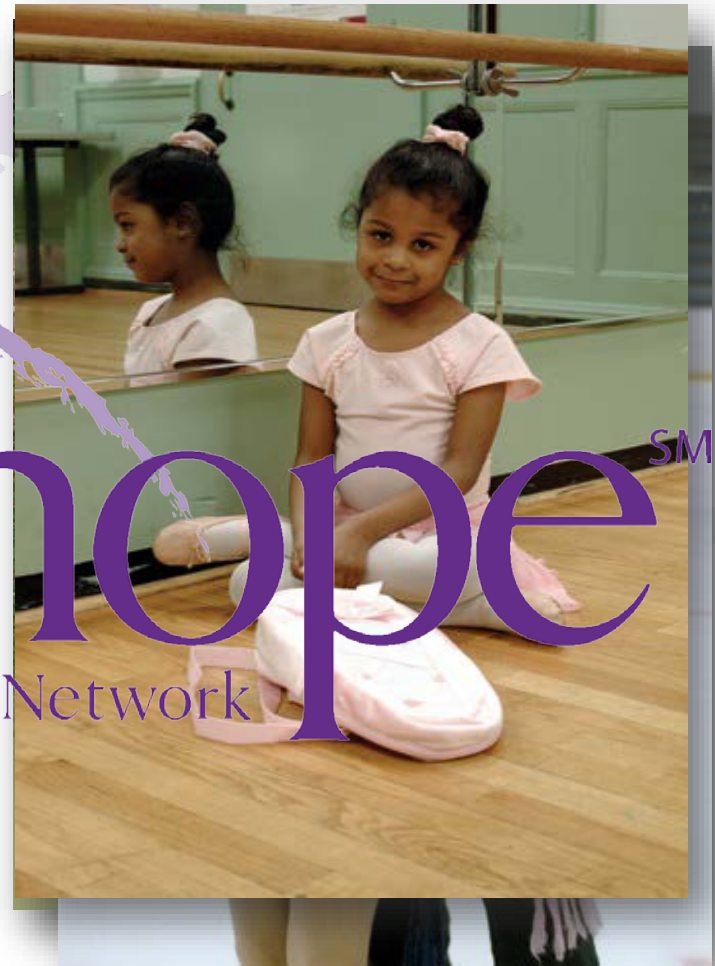
# In Summary

- Gift of Hope: Who we are and what we do
- The critical need for organ and tissue donation
- Regulatory support for organ and tissue donation
- The organ and tissue donation system
- Organ donation process
- Tissue donation process
- Obstacles to organ and tissue donation success
- Your role in the process

# Available Resources

- Eric Price, your Gift of Hope Hospital Liaison
  - [eprice@giftofhope.org](mailto:eprice@giftofhope.org)
- Gift of Hope website ([GiftofHope.org](http://GiftofHope.org))
- In-services, workshops, conferences
- Newsletters, e-mail alerts, fact sheets
- Hospital Donation Team
- Gift of Hope Donor Reference Binder





# hope

Donor Network