

# T2 axial MRI images

Copyright Rand Swenson

This may be reproduced for private, noncommercial, educational use. Not for sale or commercial distribution

# T2 coronal MRI images

- T2 weighted images have a long TR (usually 2000-3000).
- They show water as bright signal. Therefore, CSF is bright and also any part of the normal brain (gray matter) or abnormal brain (edema, ischemic stroke, demyelination, tumor, etc) that has high water concentration will be bright.

# T2 coronal MRI images

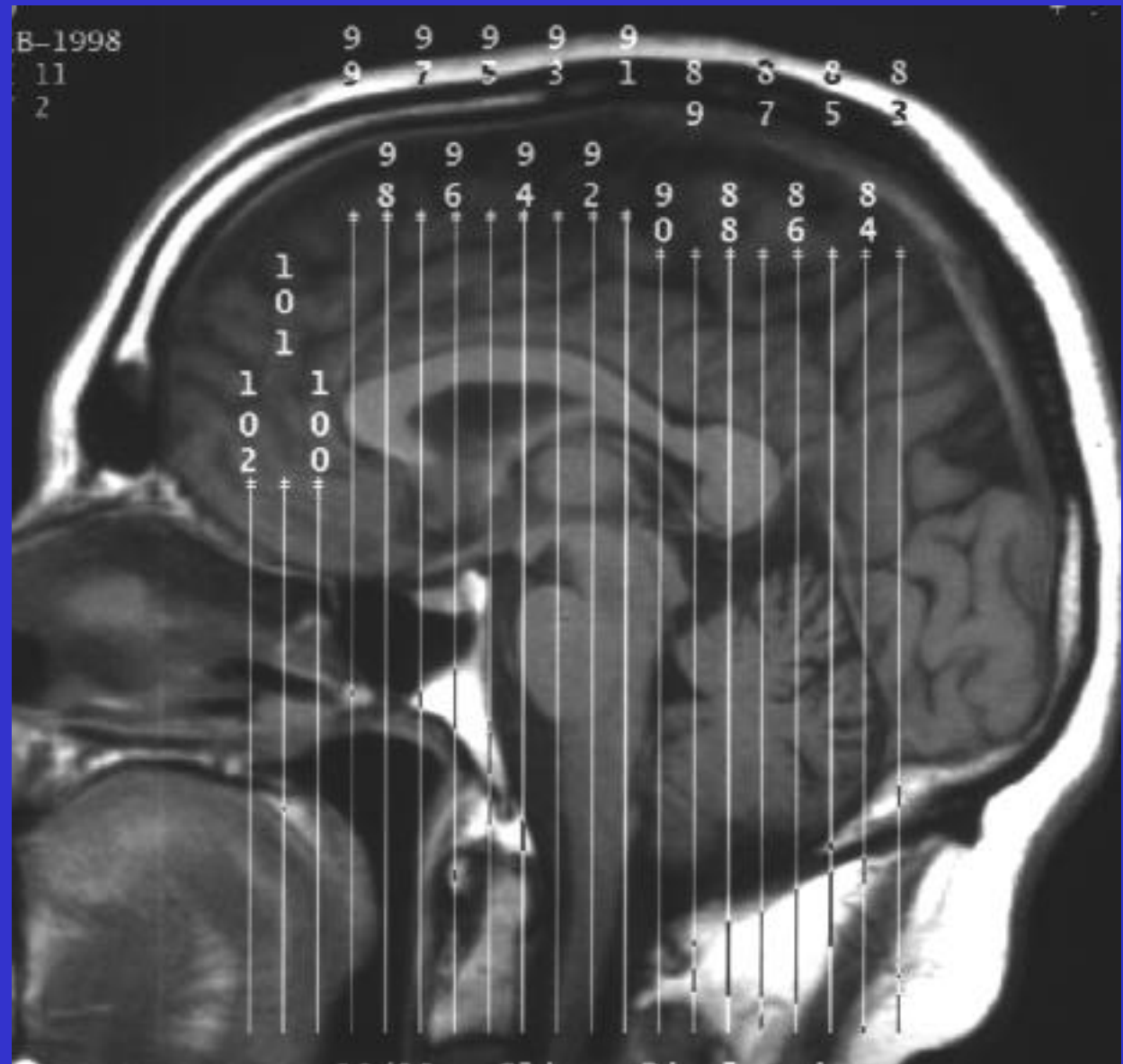
- Coronal images are particularly good for viewing structures of the temporal lobe, such as the hippocampus.
- They are also very useful for viewing the pituitary gland and the structures around the hypothalamus and optic chiasm.

# Instructions

- Review the MR image
- The following slide will duplicate the image and will have lines labeled with a question button.
- Click the question button for identification of the structure.
- As soon as your pointer leaves the question button, the response will be hidden.

# T2 coronal MRI

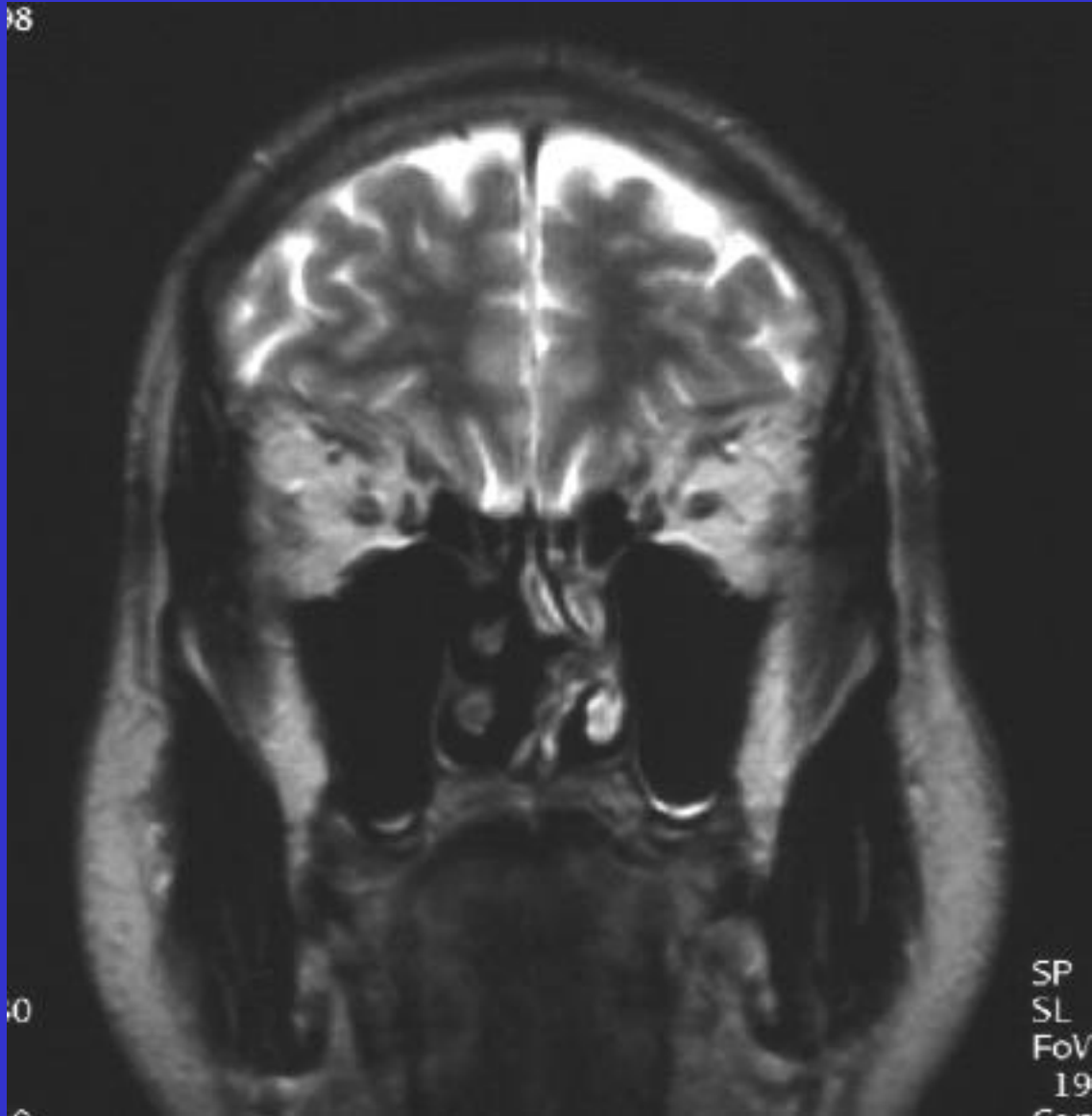
Location of the slices are represented on this sagittal image. Each of the subsequent images has a corresponding number.



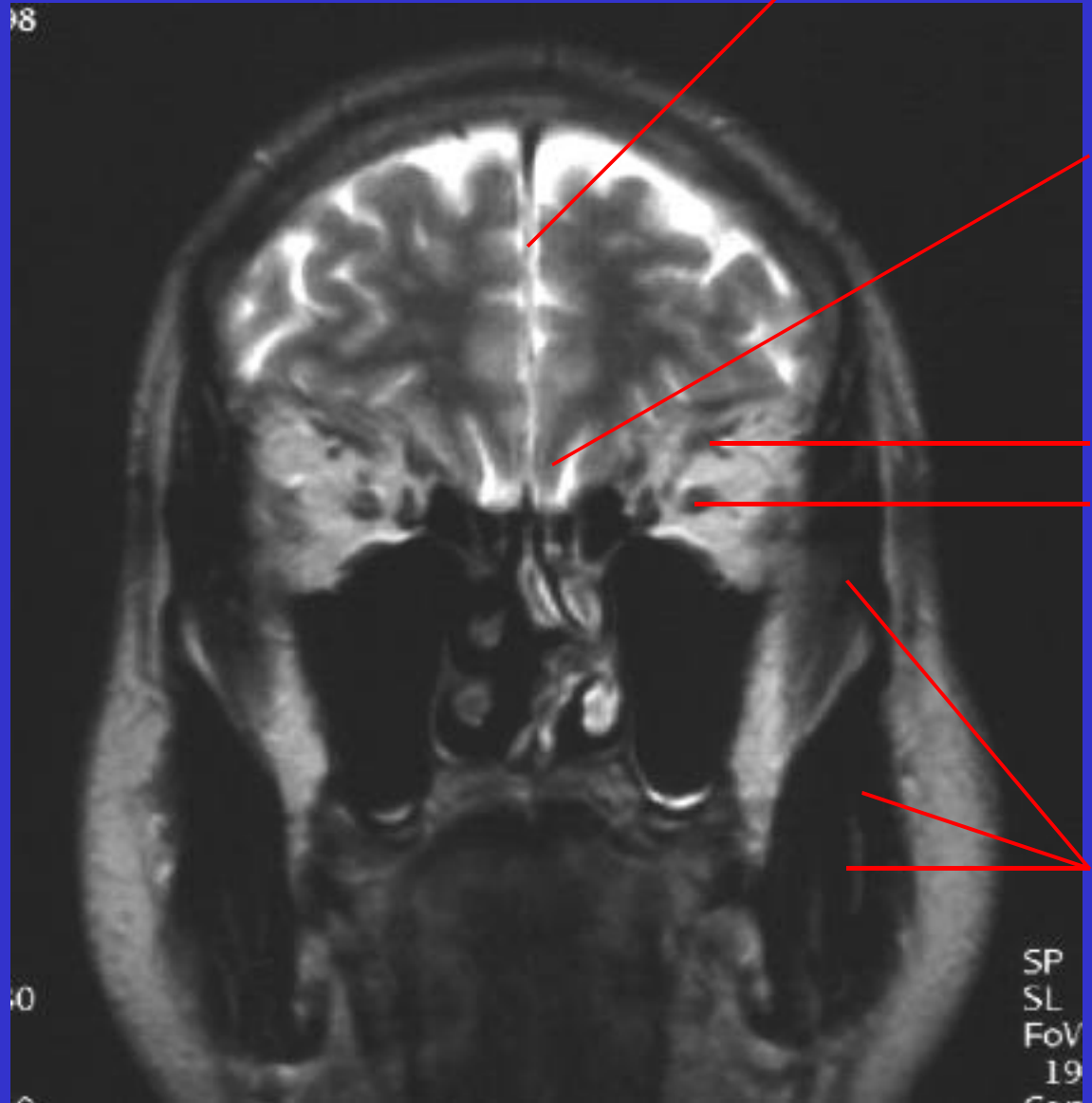
1 2 3 4 5 6 7 8 9 10 11 12 13 14 15 16 17 18 19 20

Slice number

T2 coronal MRI #1

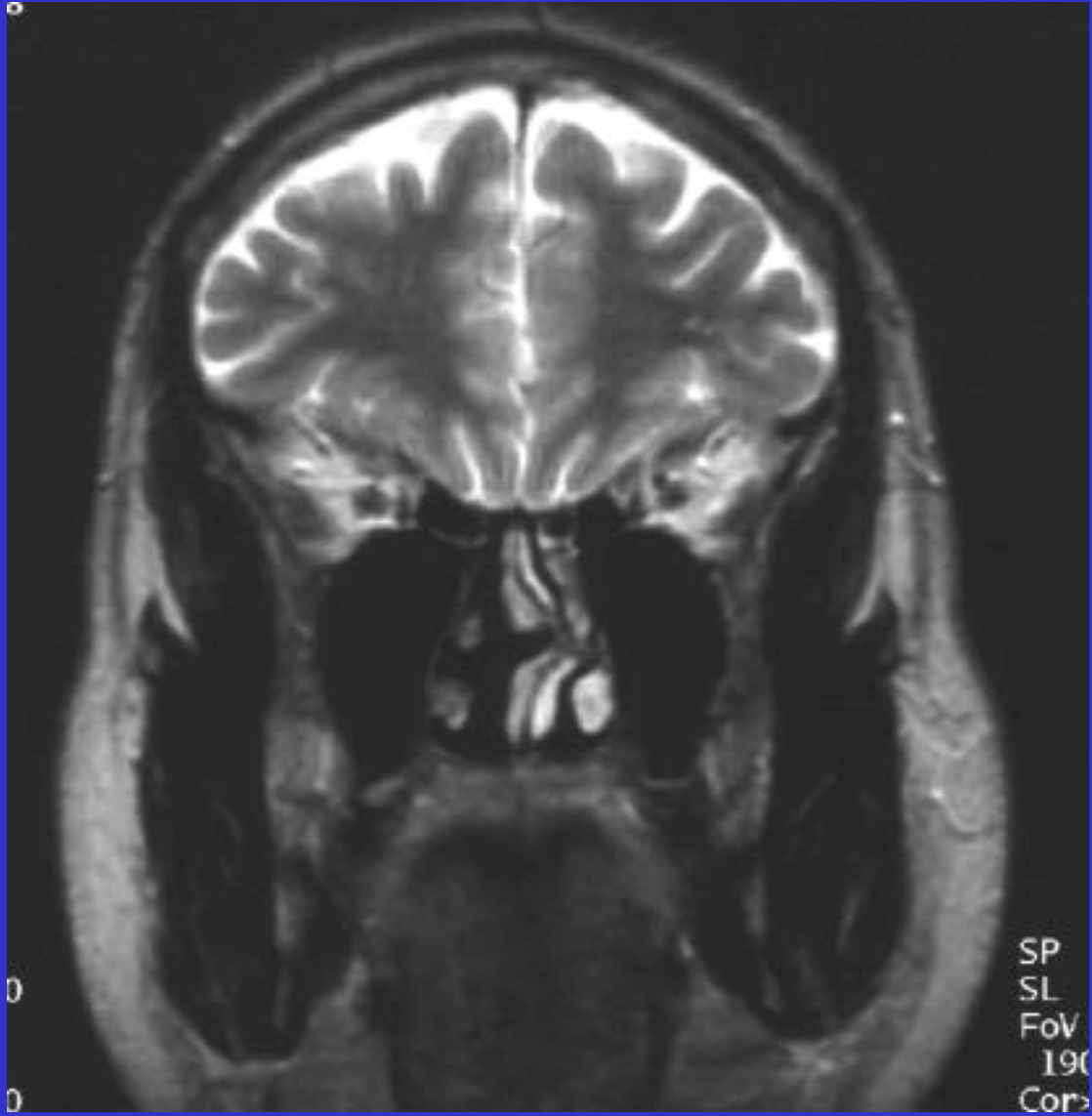


# T2 coronal MRI #1



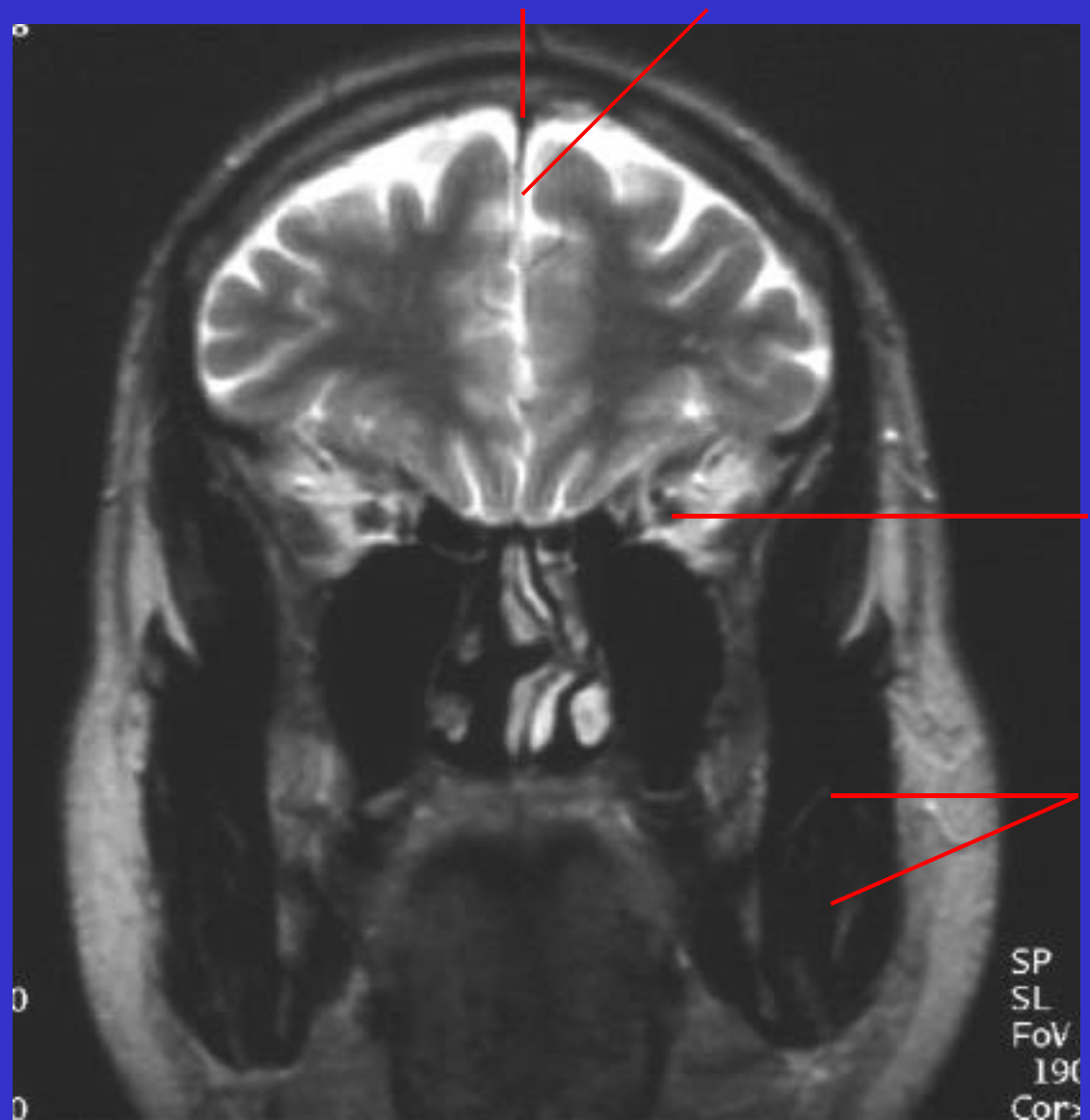
Click on button for answer.  
Leave button to hide answer.

T2 coronal MRI #2



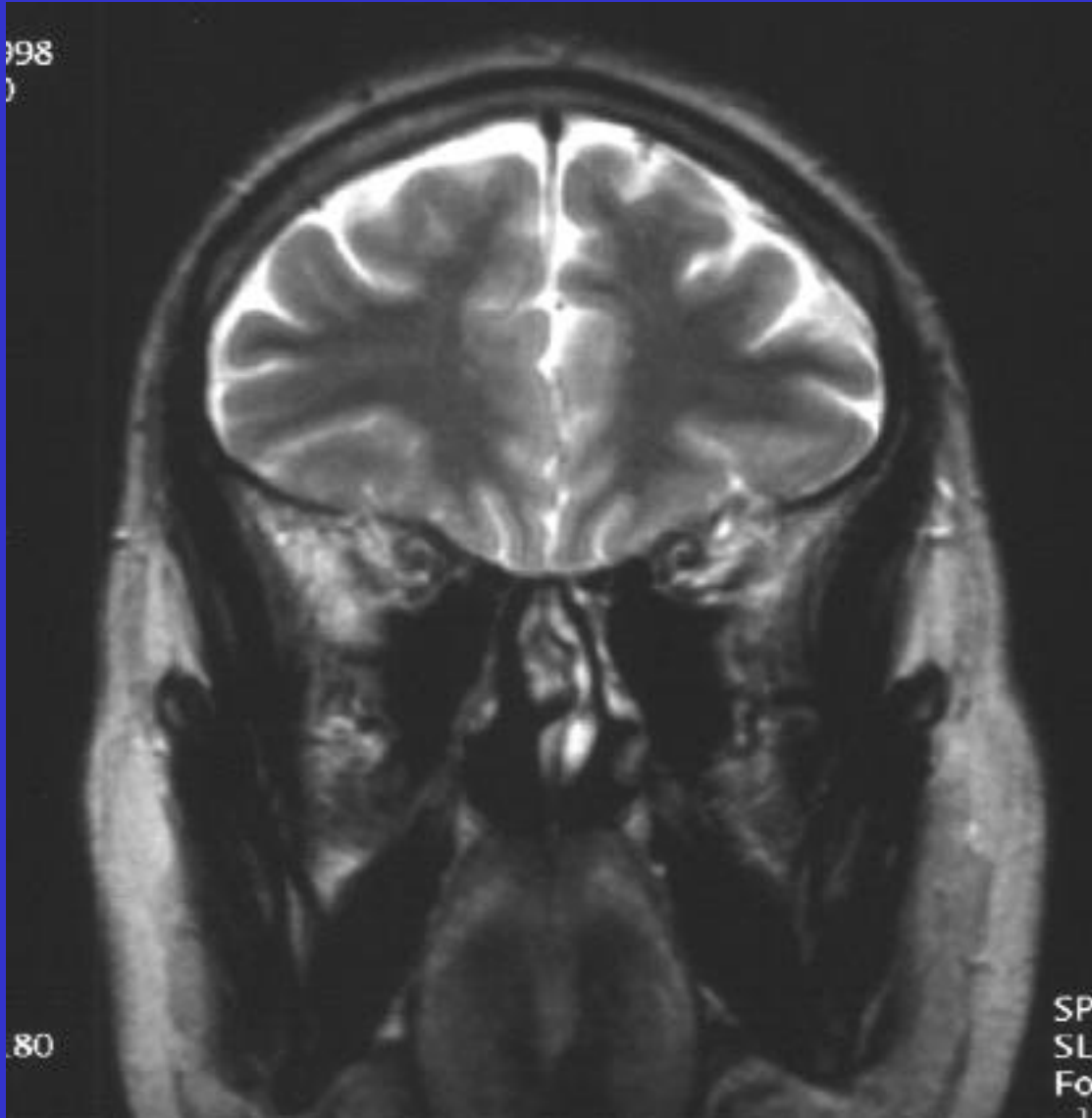


# T2 coronal MRI #2

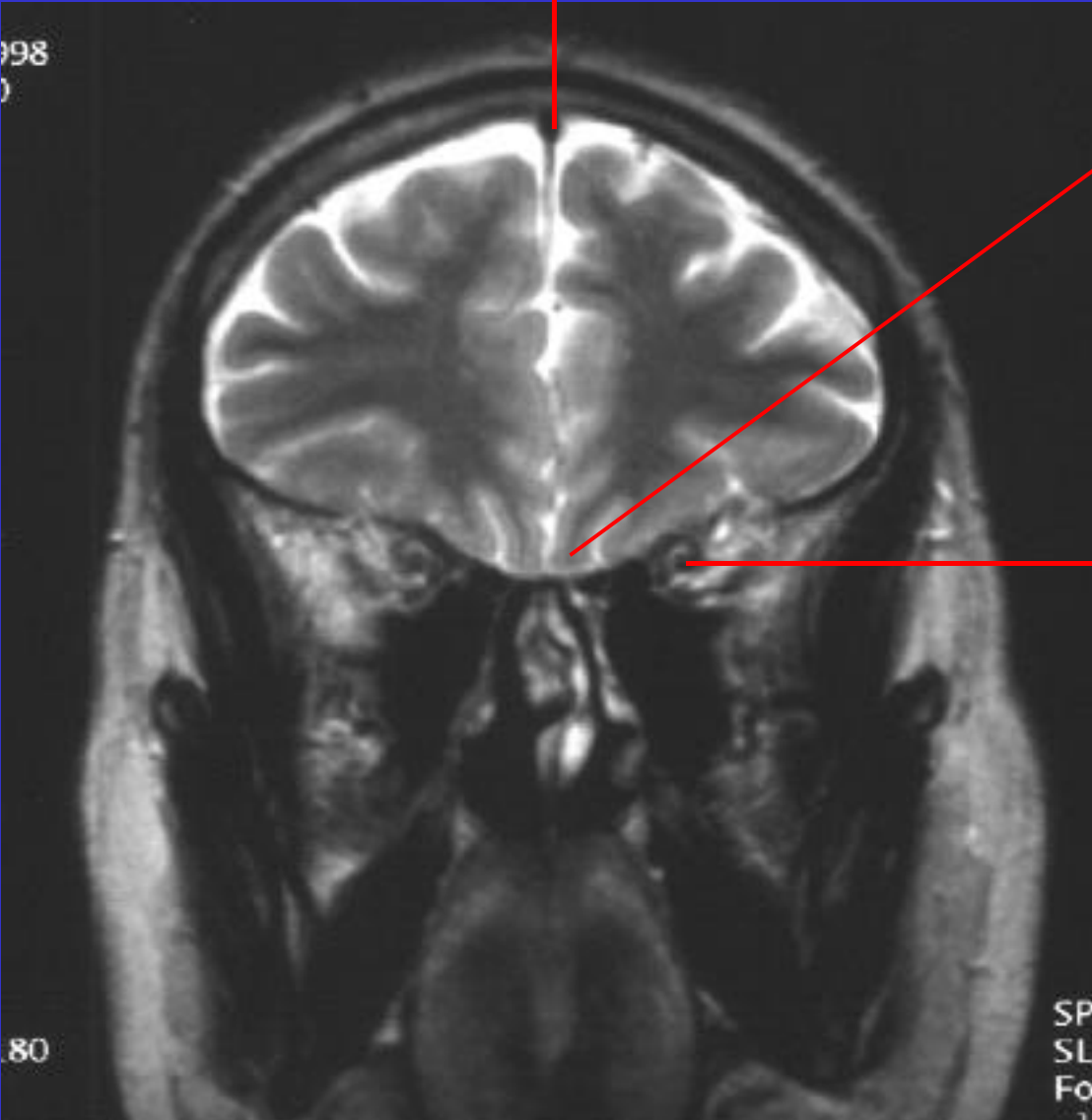


Click on button for answer.  
Leave button to hide answer.

T2 coronal MRI #3

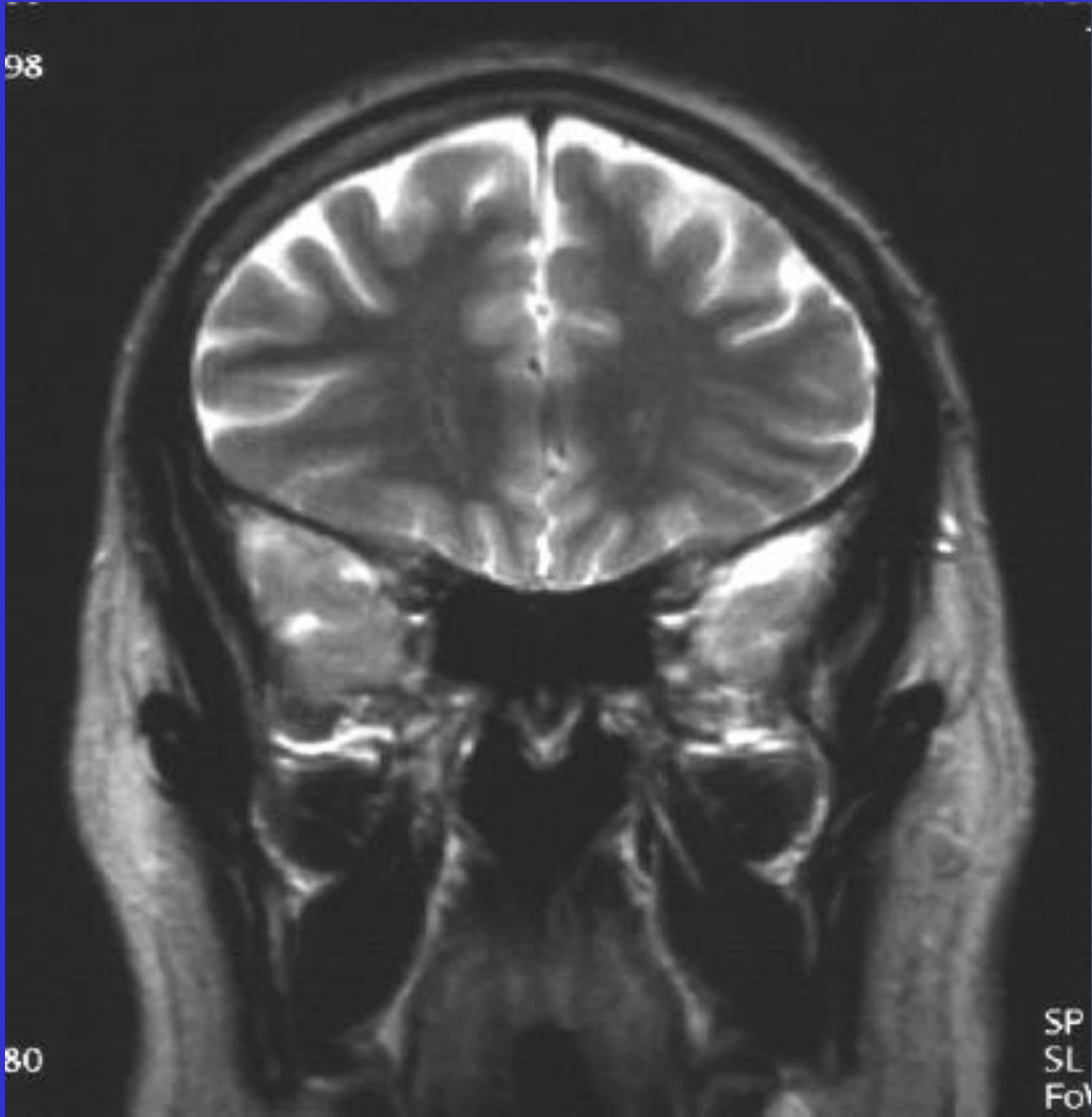


# T2 coronal MRI #3

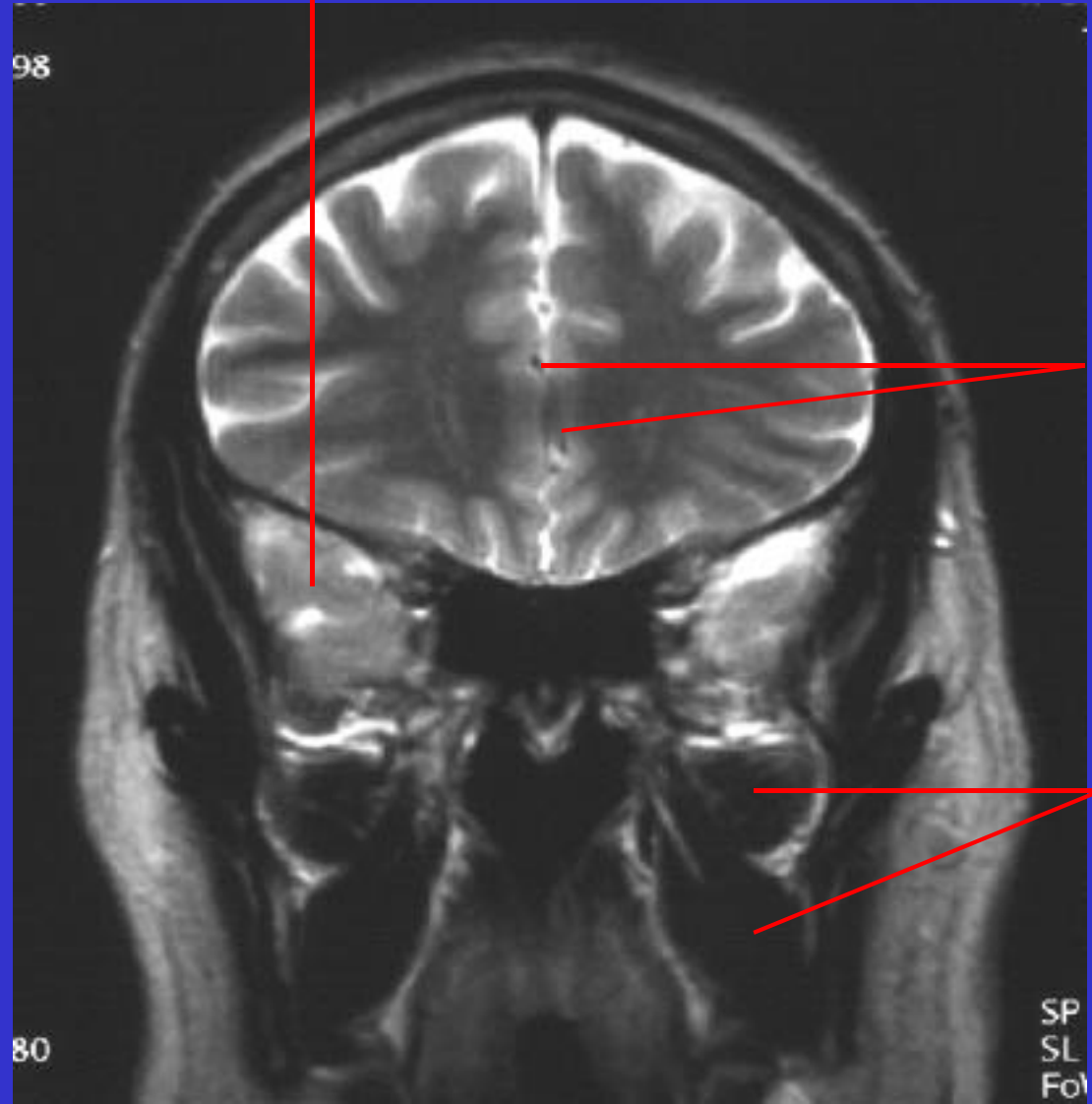


Click on button for answer.  
Leave button to hide answer.

T2 coronal MRI #4

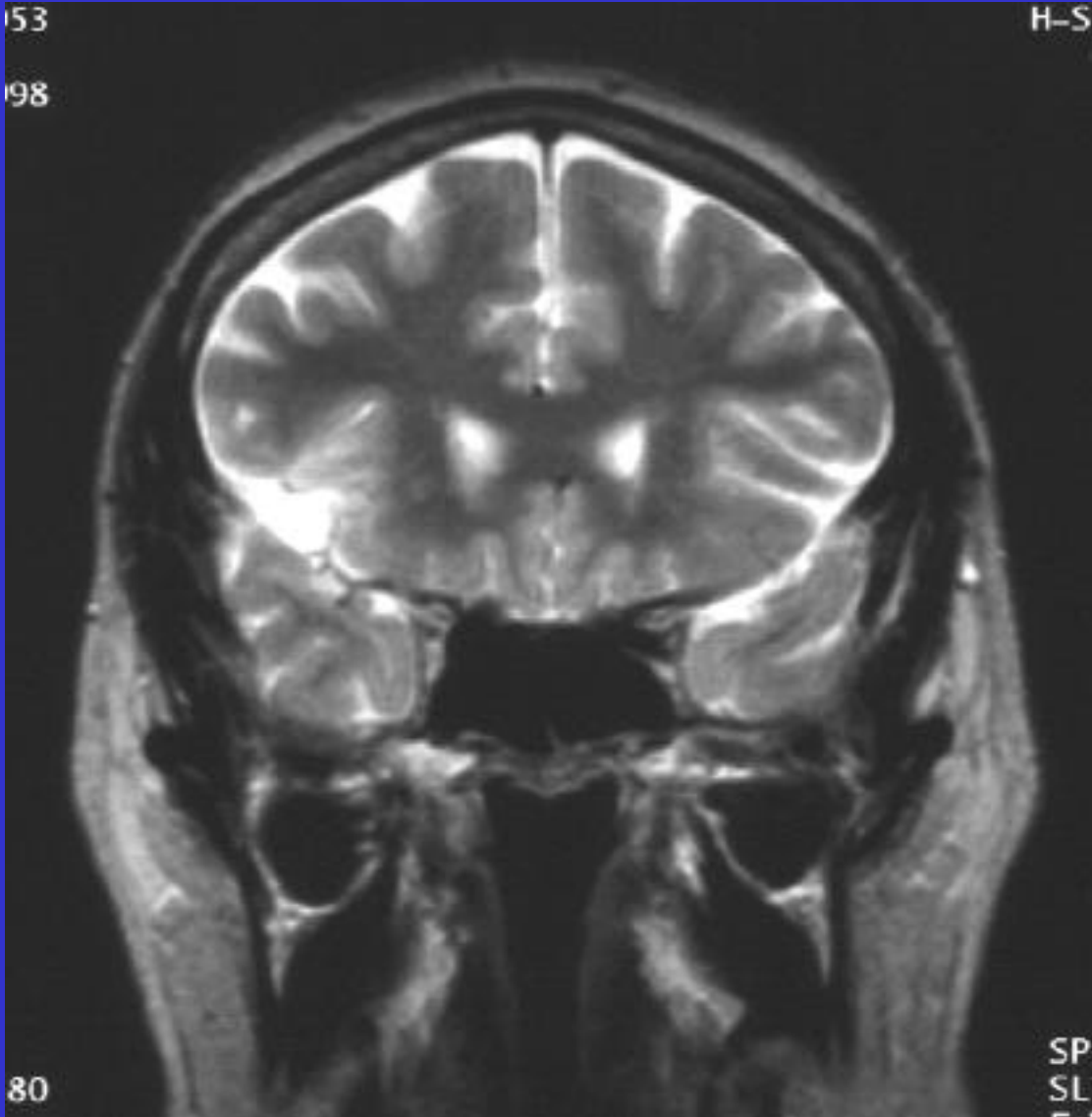


# T2 coronal MRI #4

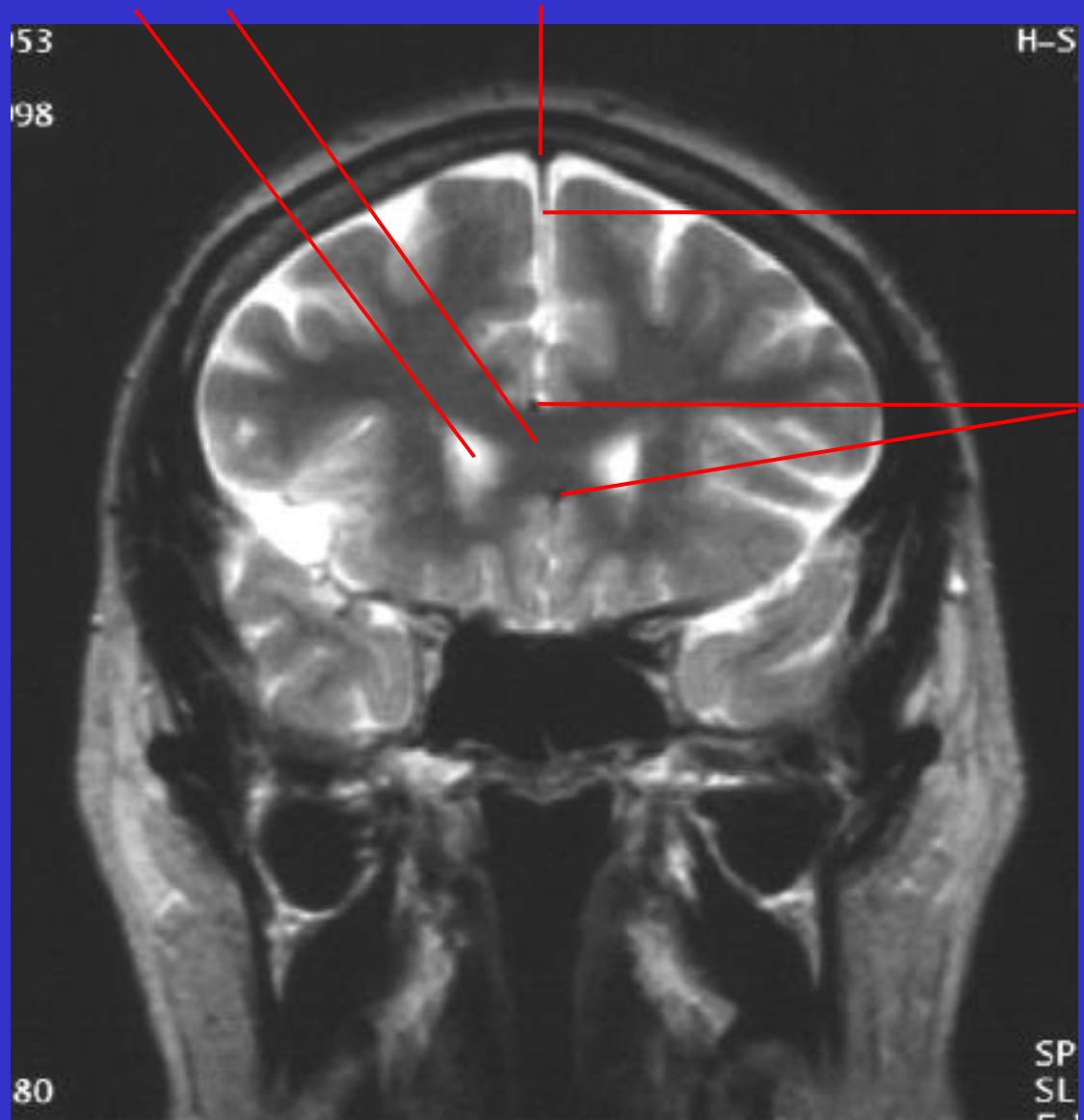


Click on button for answer.  
Leave button to hide answer.

T2 coronal MRI #5

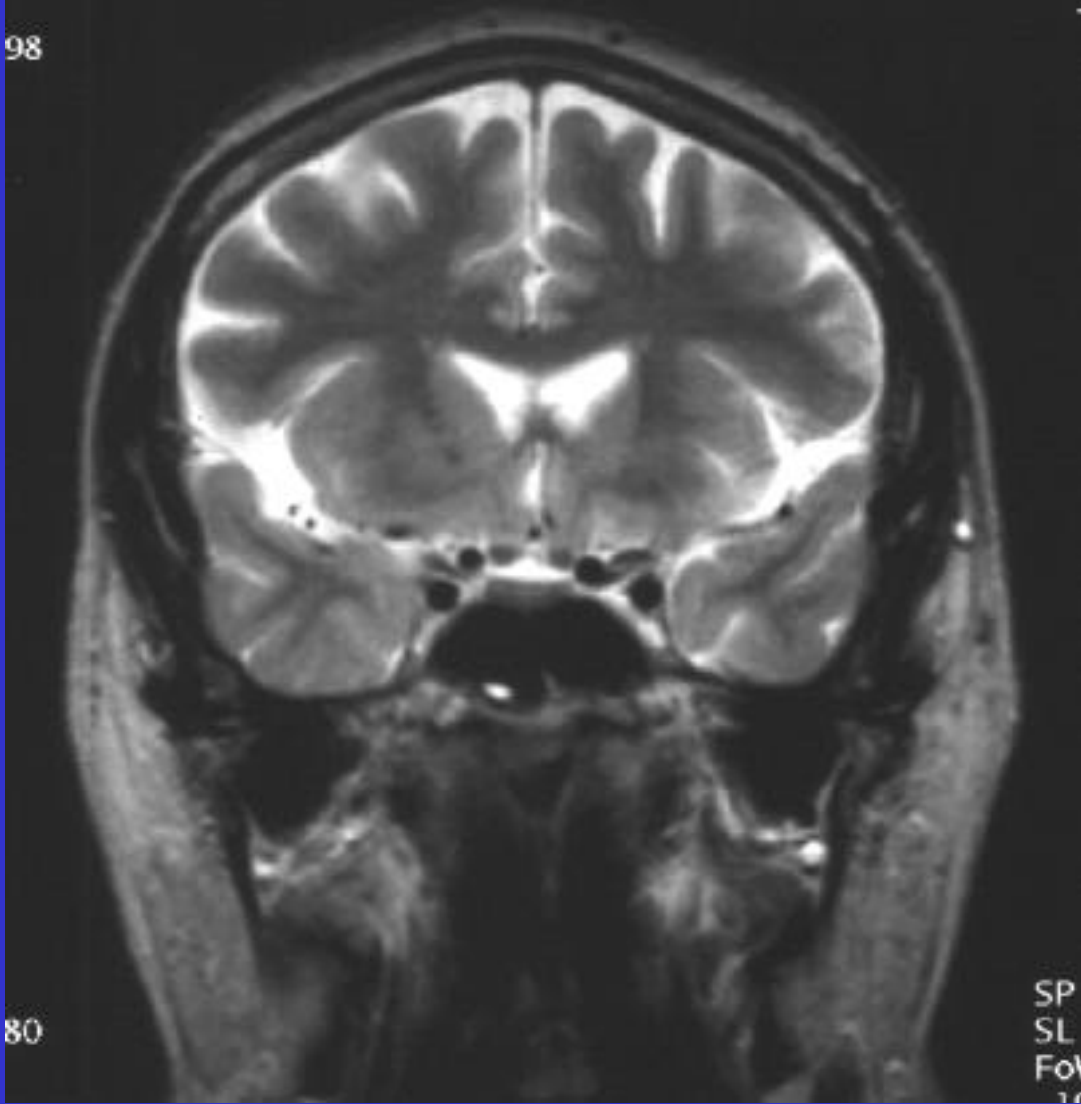


# T2 coronal MRI #5



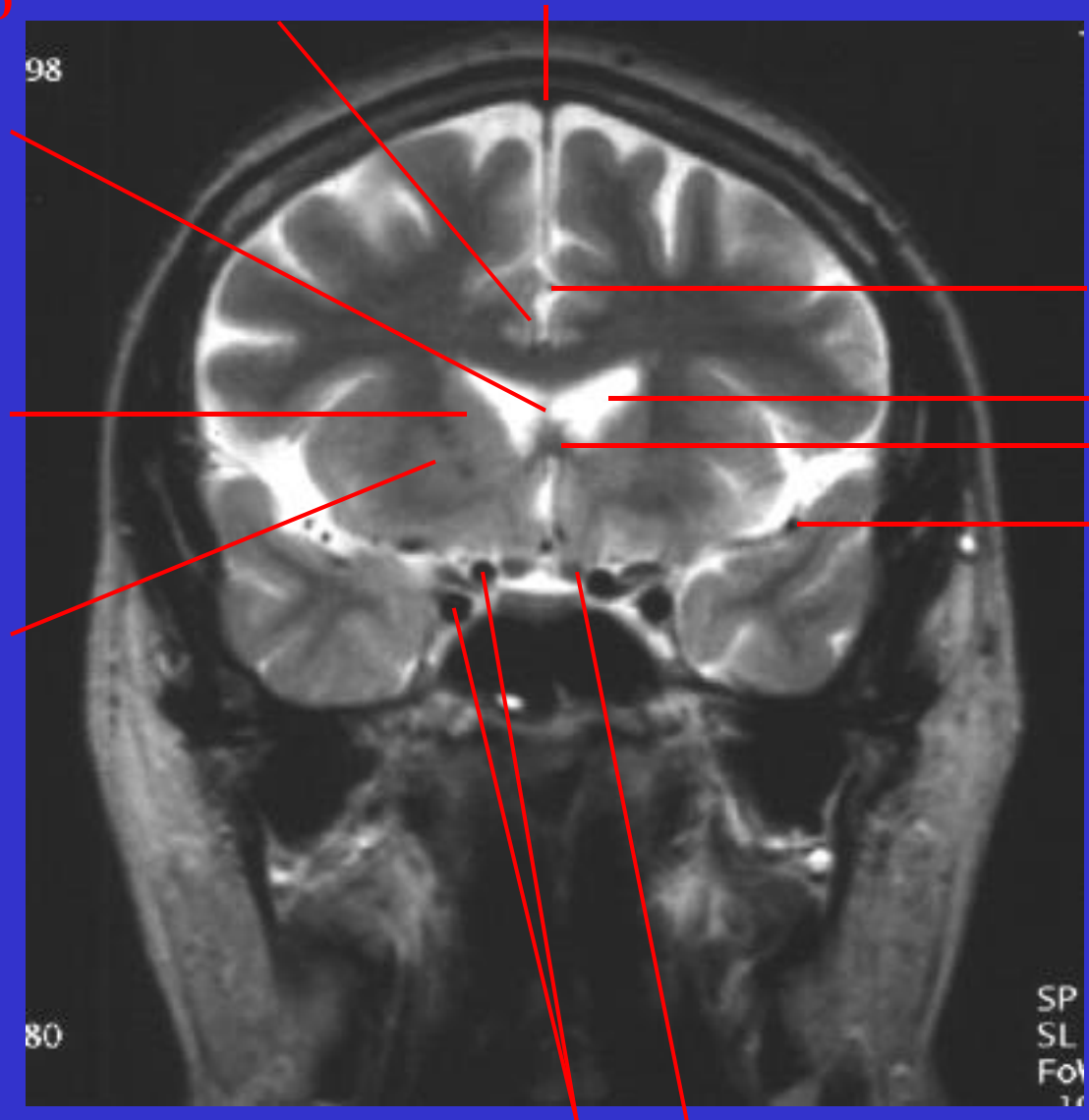
Click on button for answer.  
Leave button to hide answer.

T2 coronal MRI #6



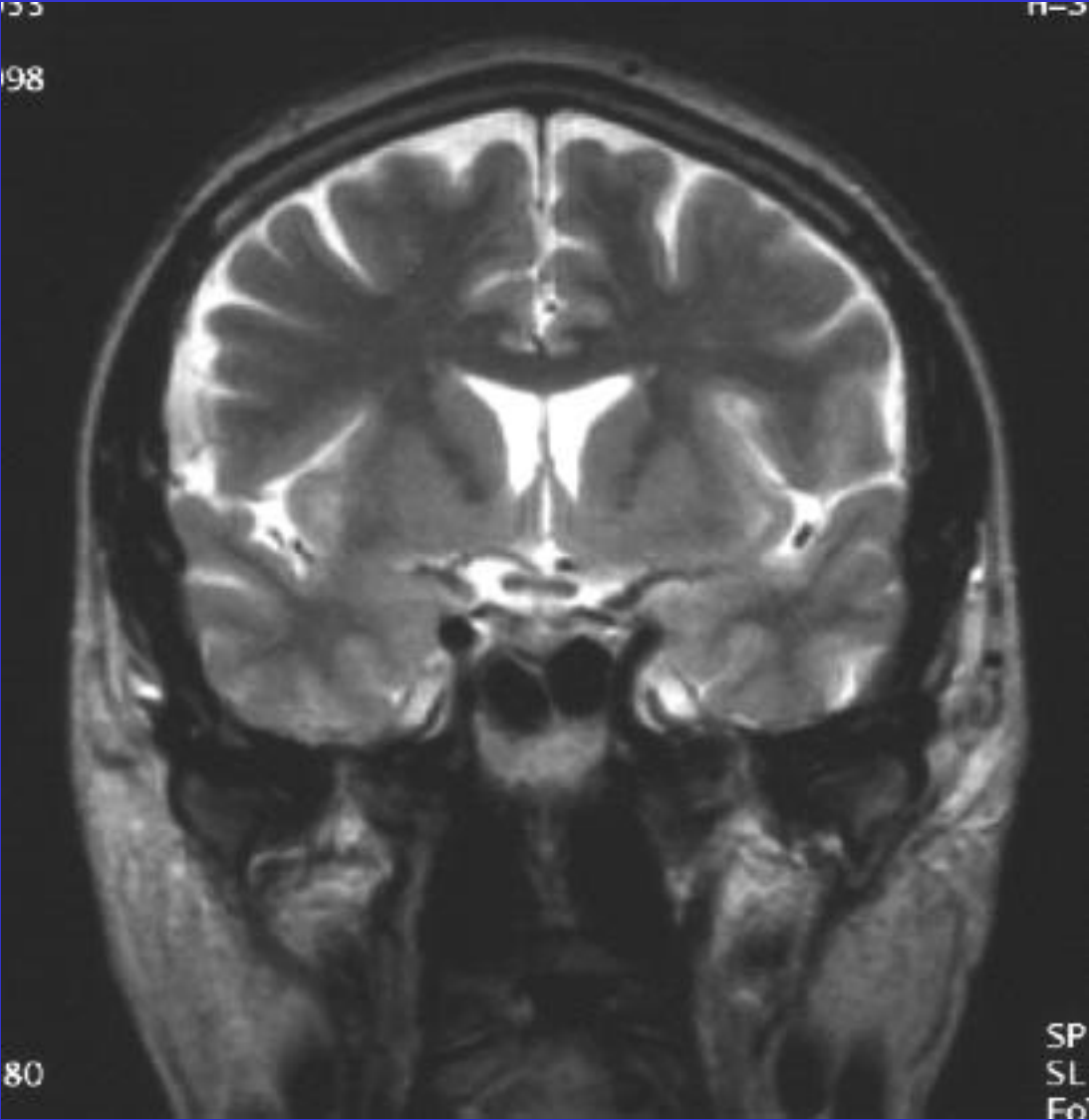


# T2 coronal MRI #6



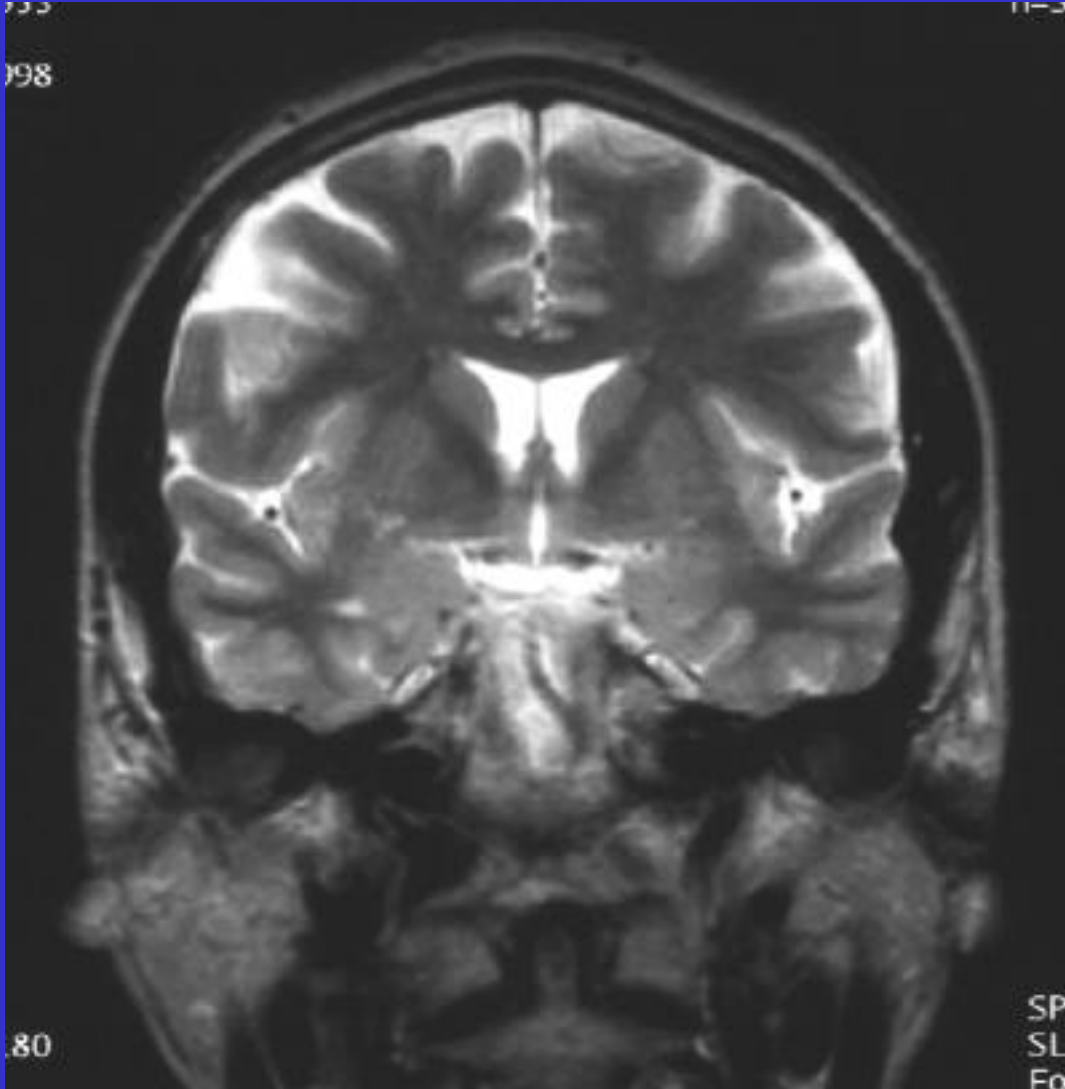
Click on button for answer.  
Leave button to hide answer.

T2 coronal MRI #7

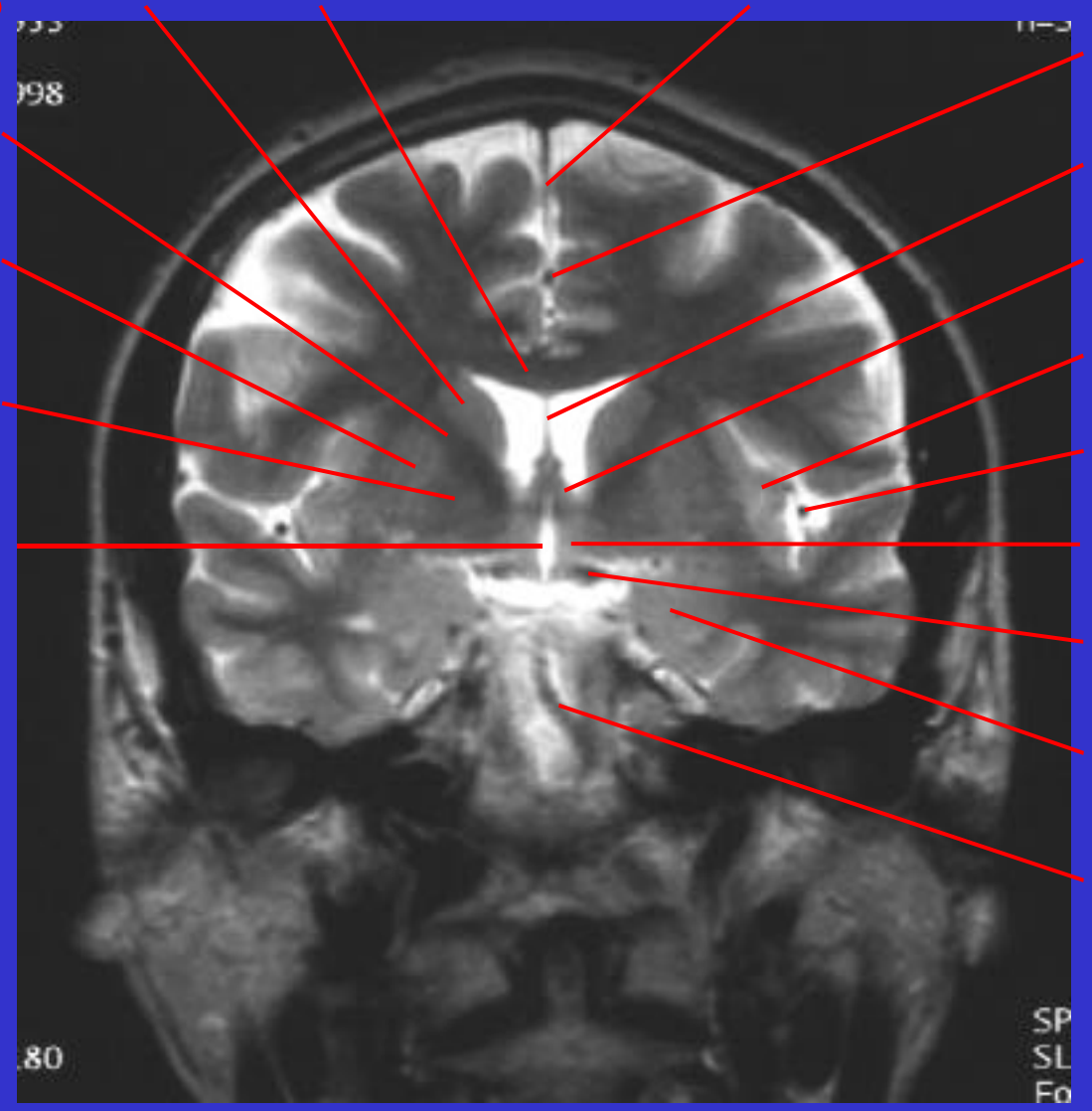




T2 coronal MRI #8

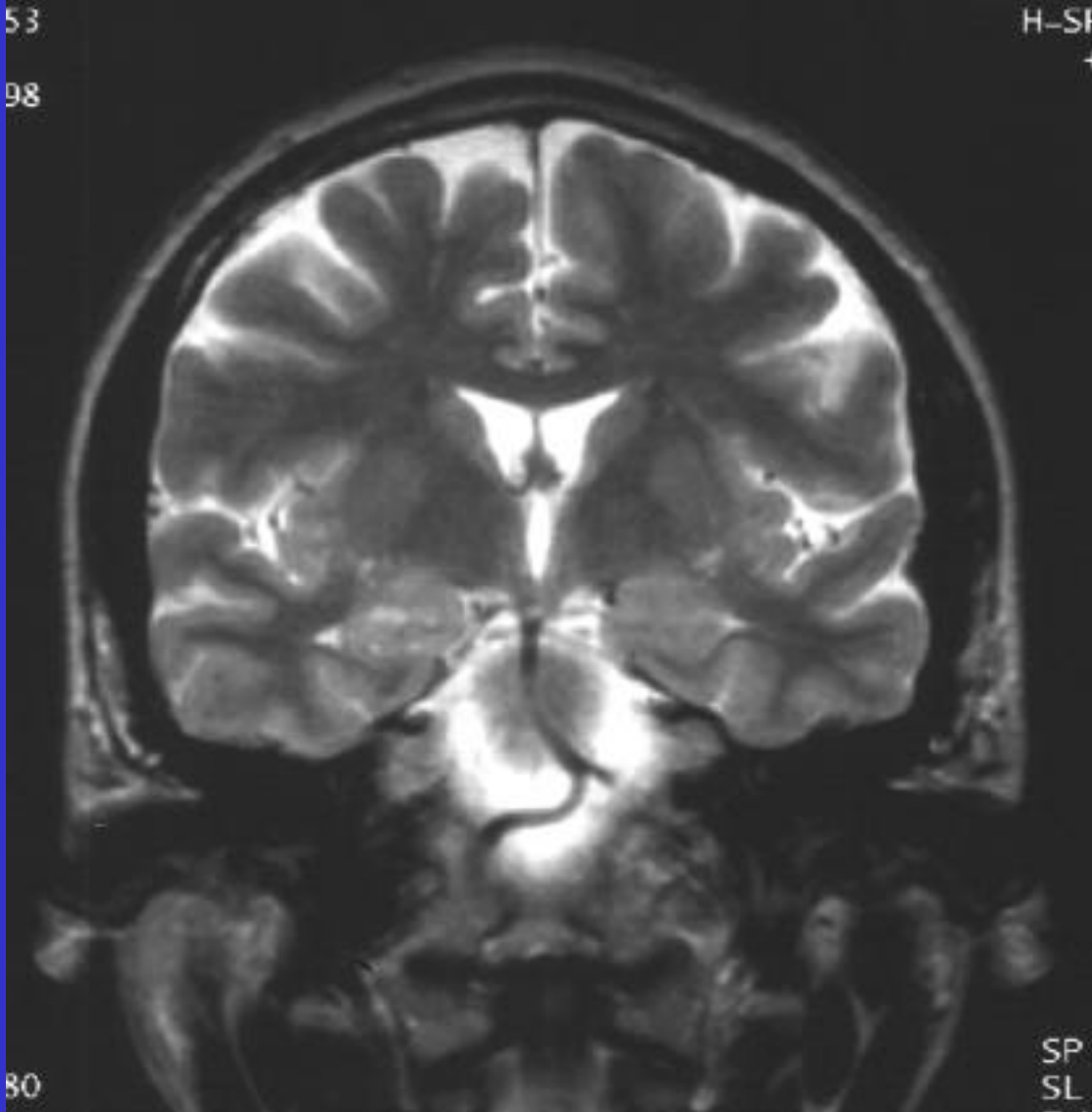


# T2 coronal MRI #8



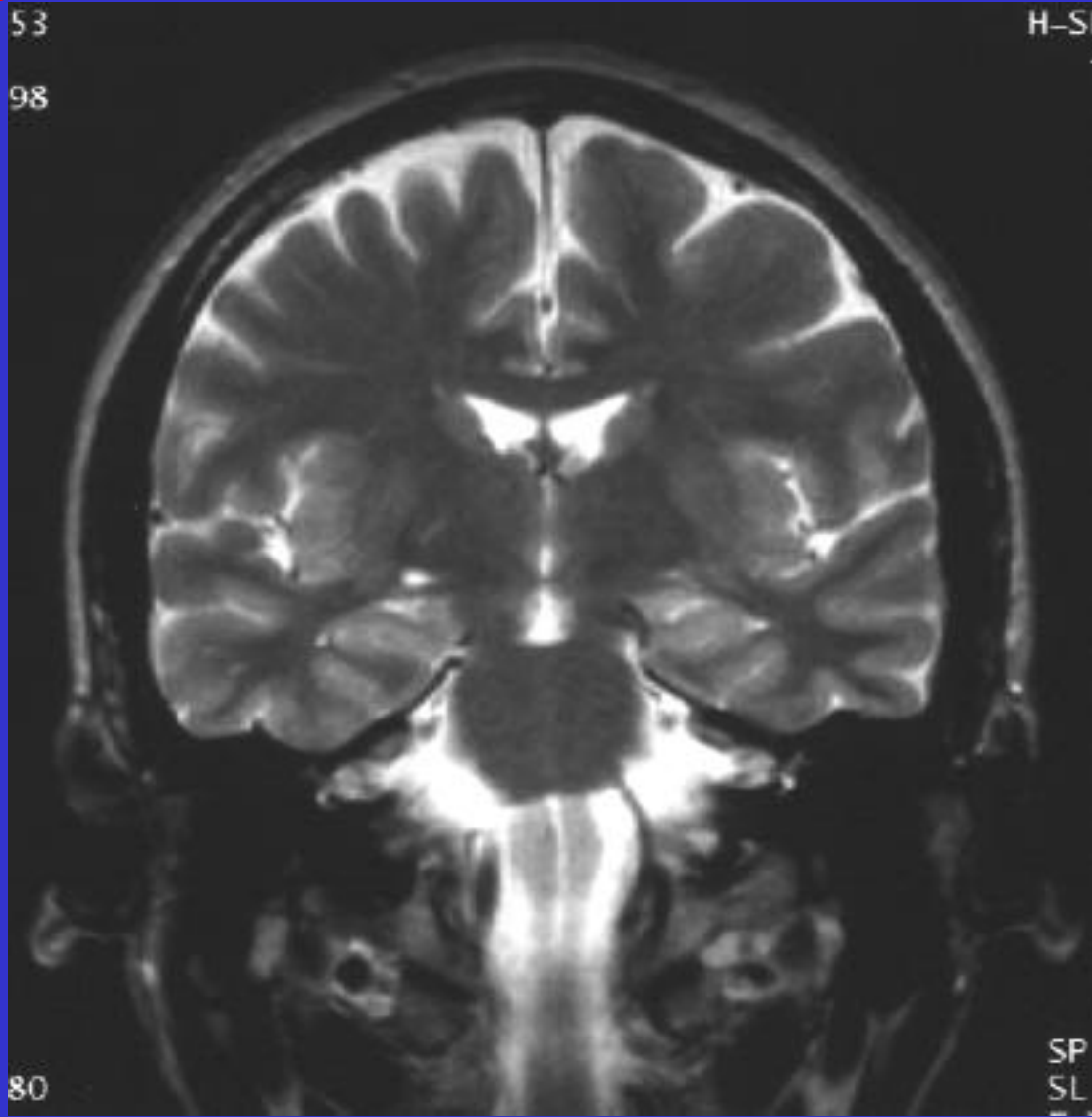
Click on button for answer.  
Leave button to hide answer.

T2 coronal MRI #9



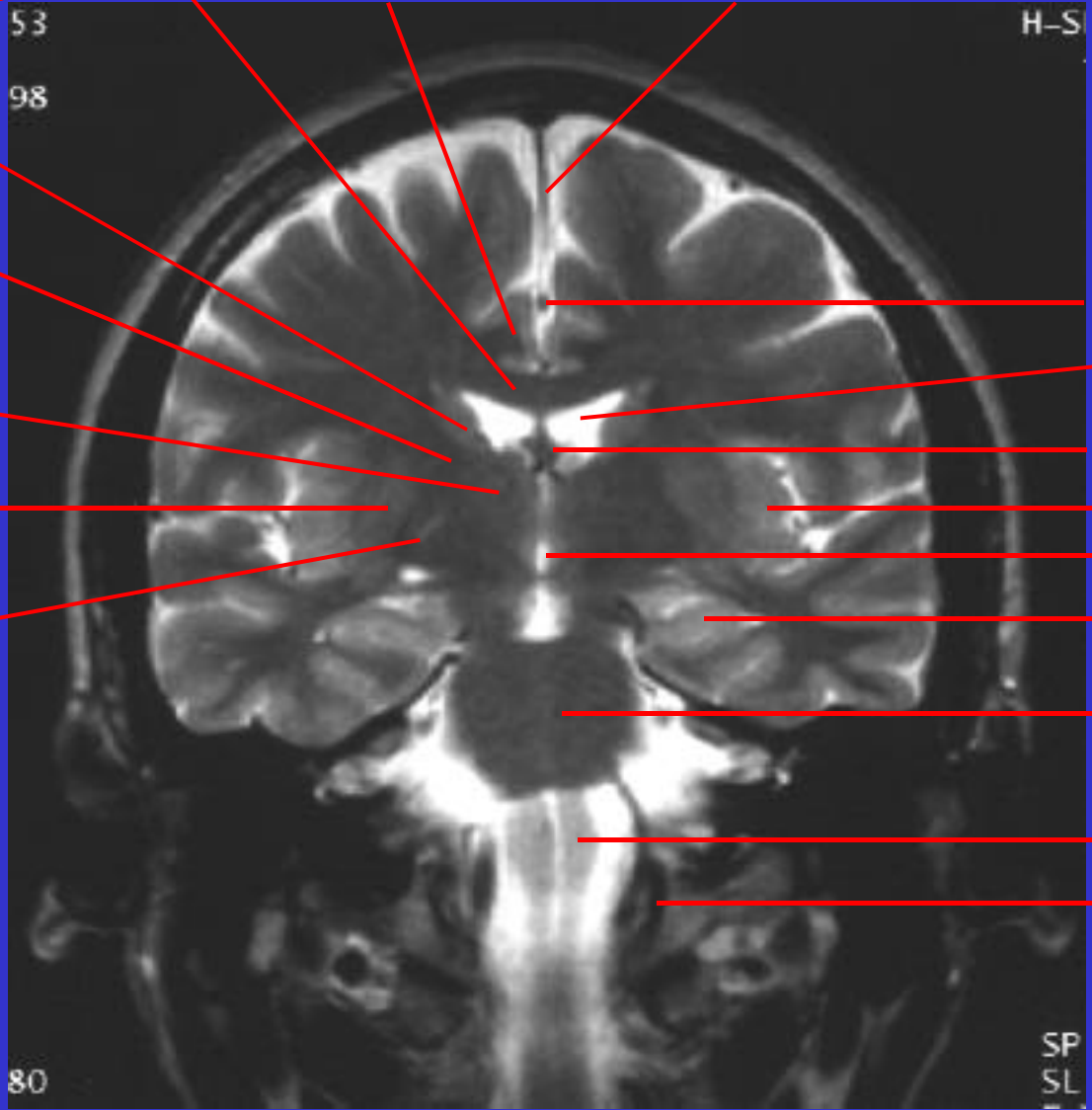


T2 coronal MRI #10



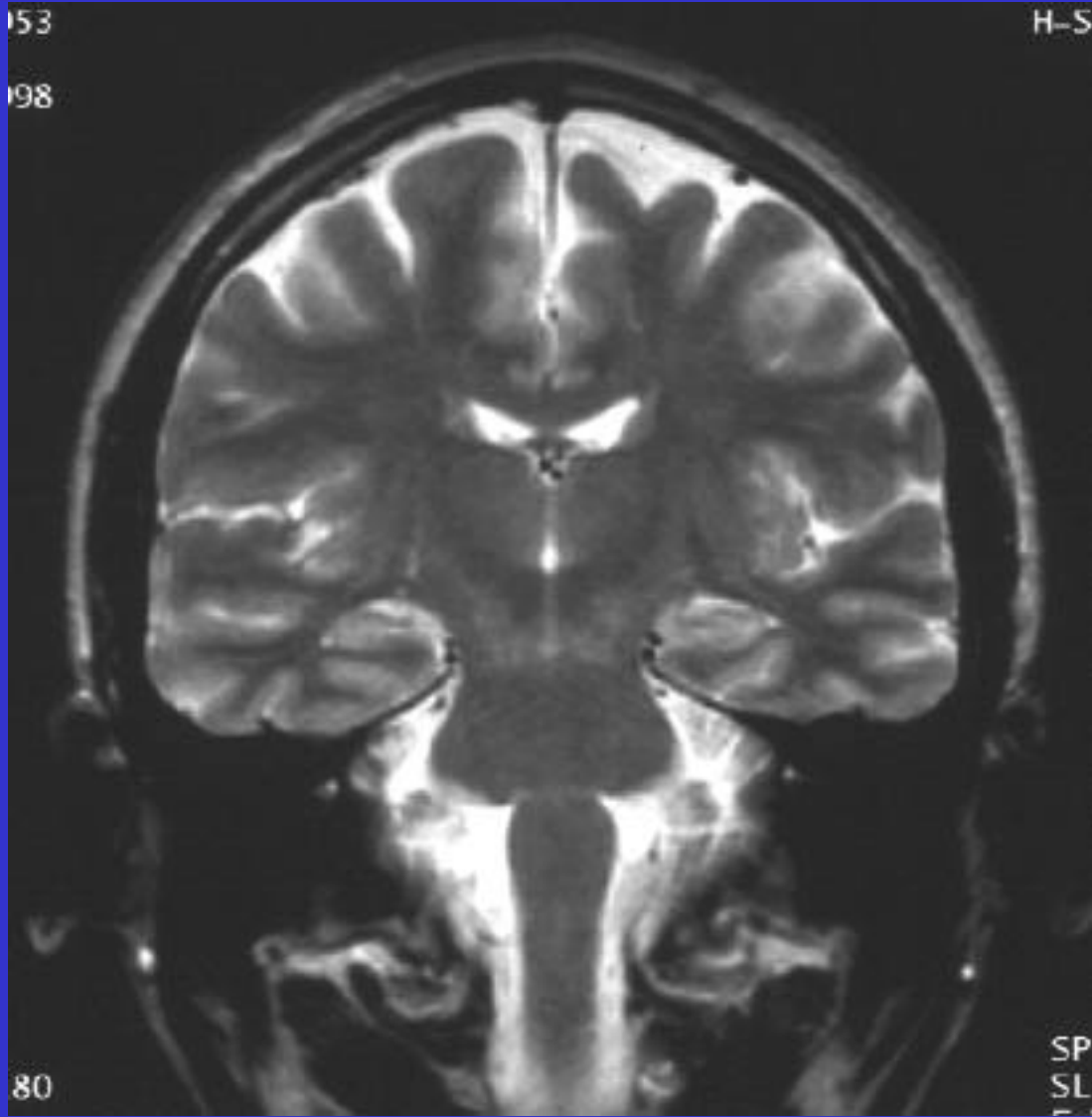


# T2 coronal MRI #10

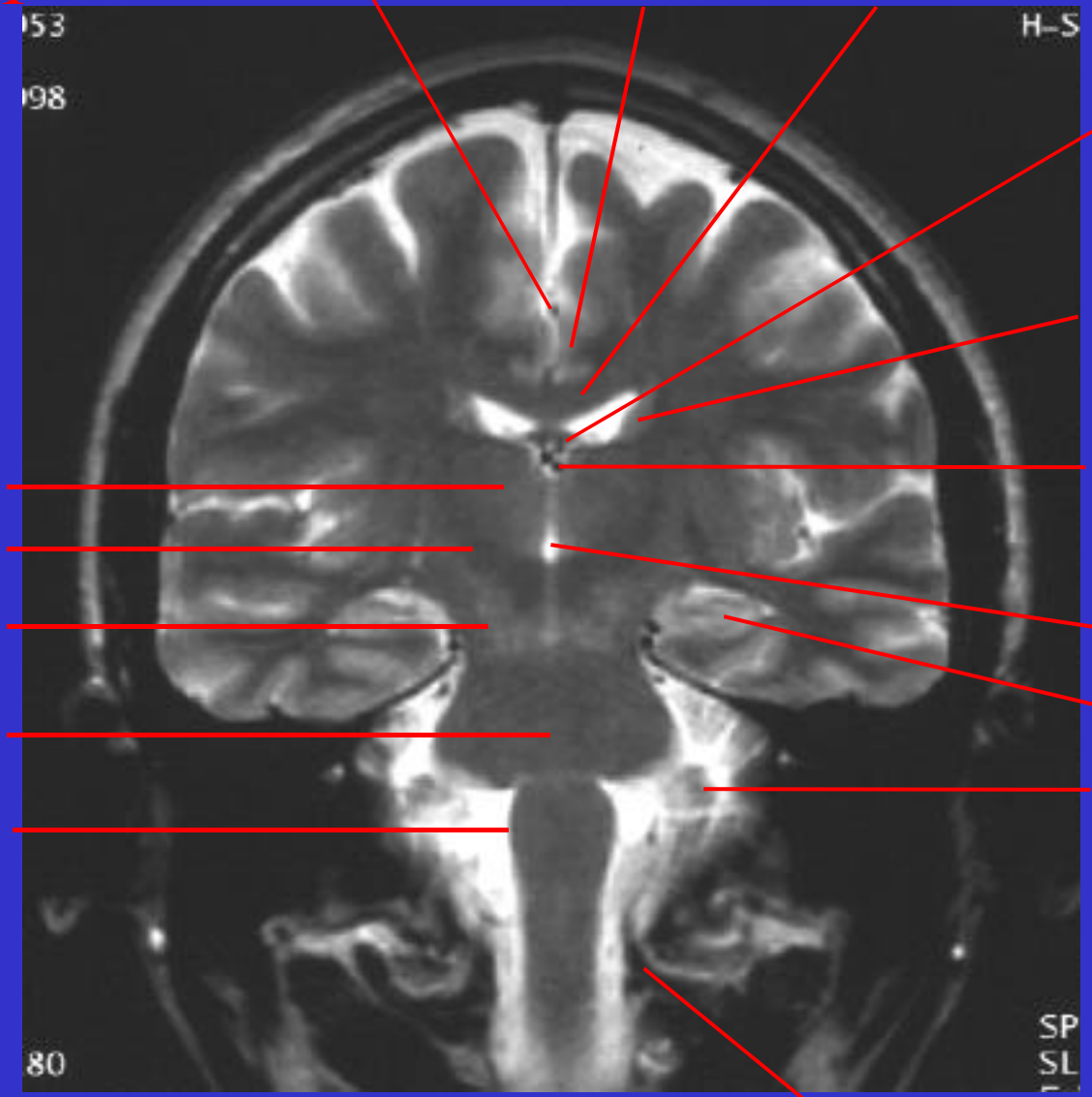


Click on button for answer.  
Leave button to hide answer.

T2 coronal MRI #11

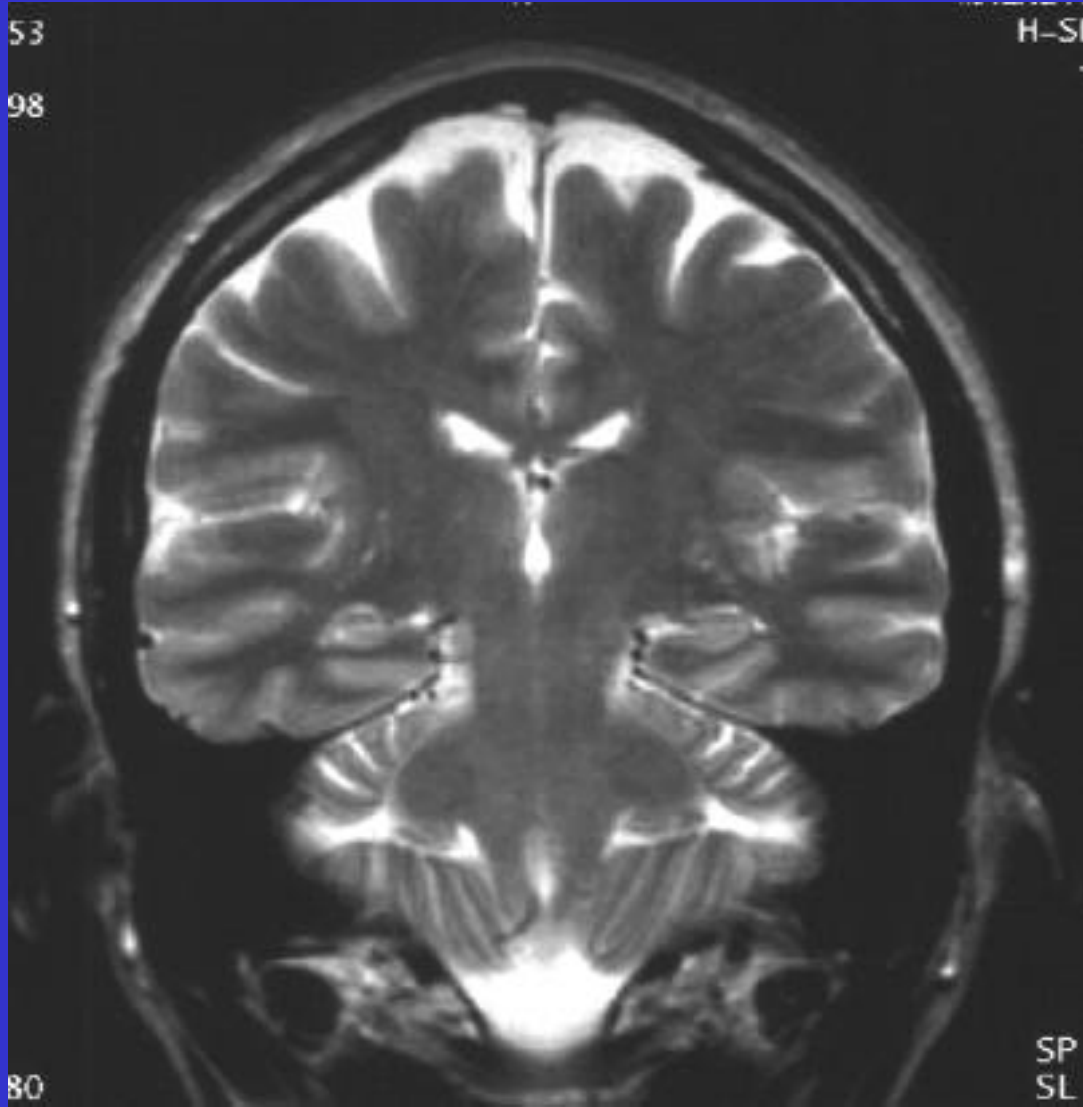


# T2 coronal MRI #11

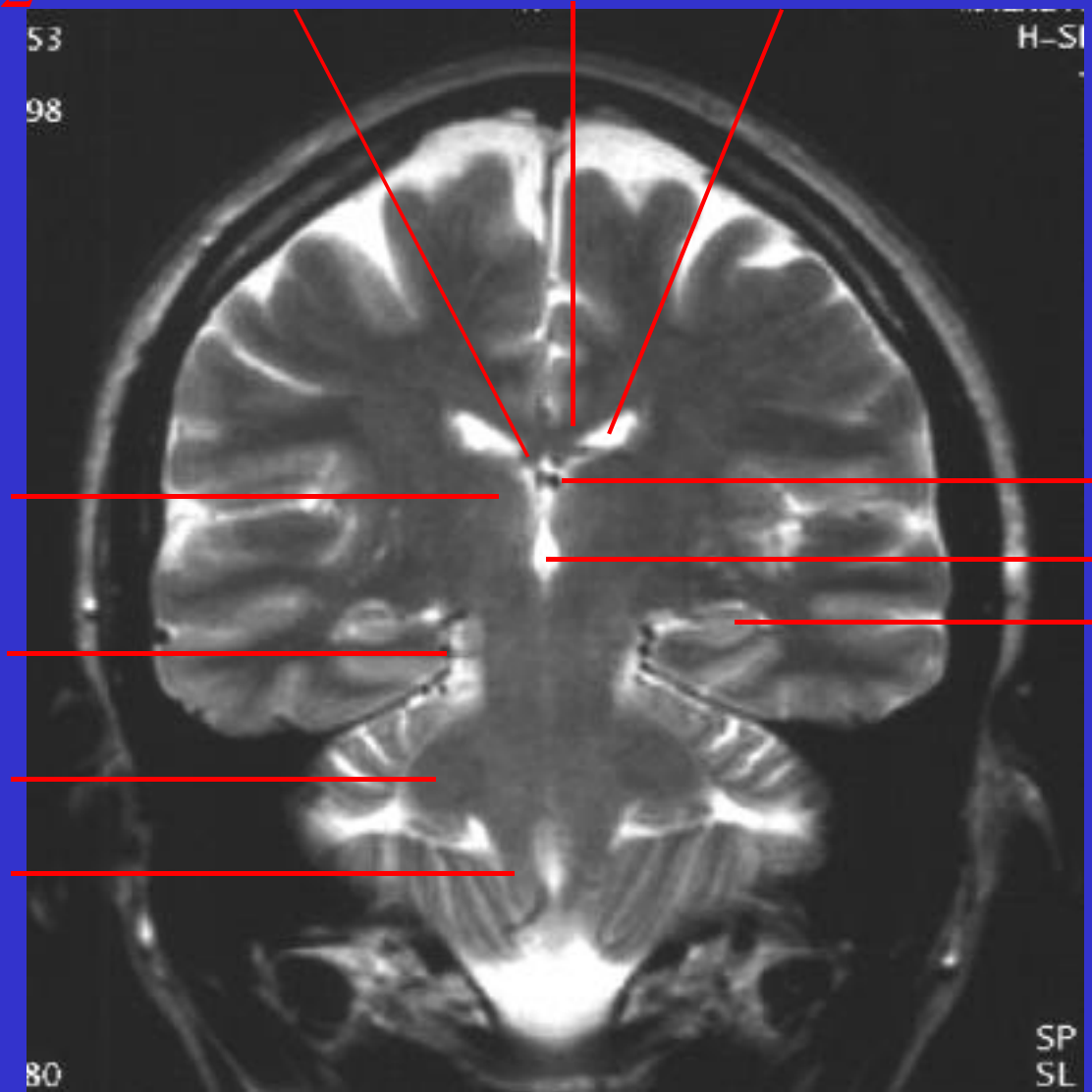


Click on button for answer.  
Leave button to hide answer.

T2 coronal MRI #12

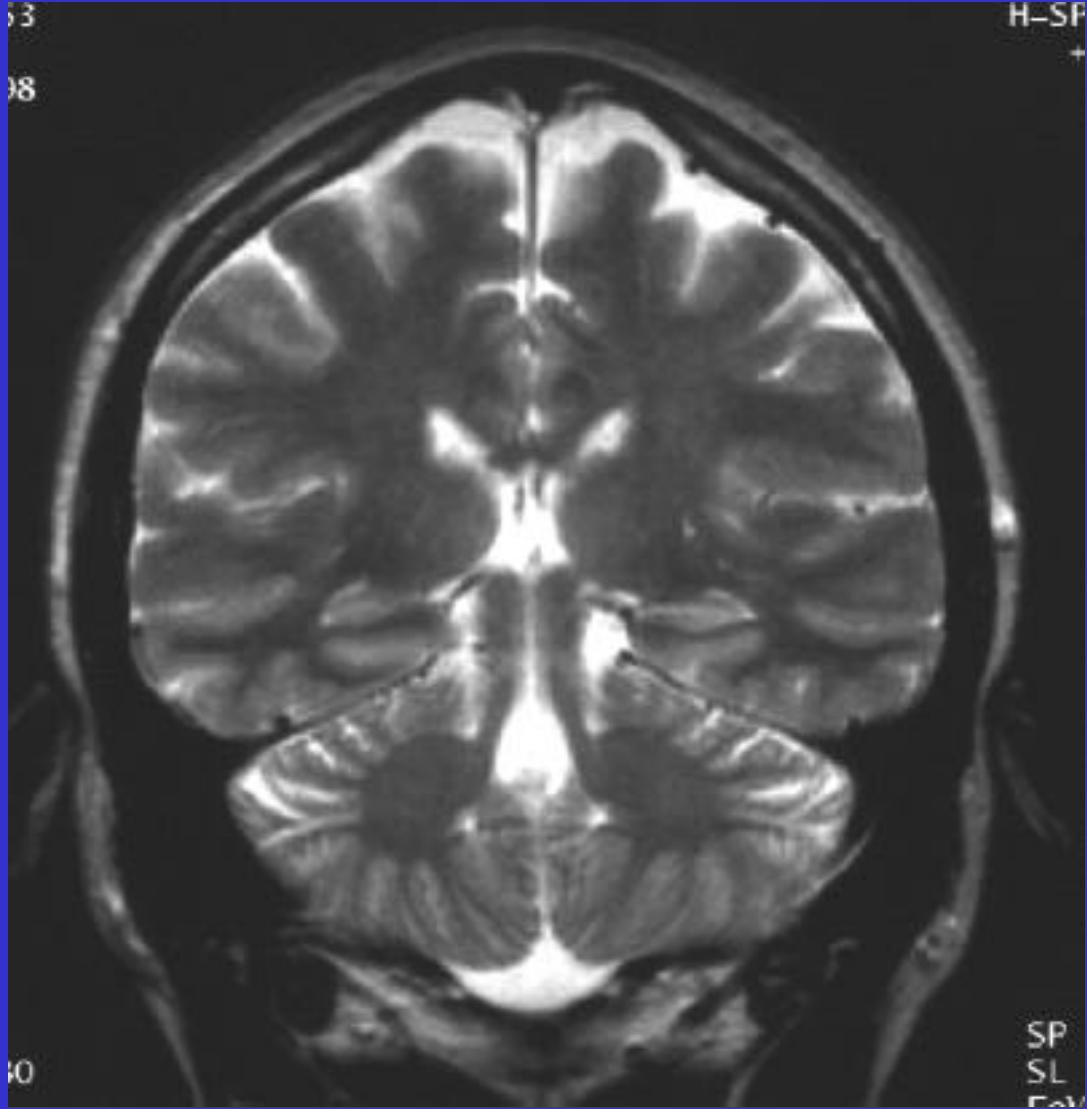


# T2 coronal MRI #12

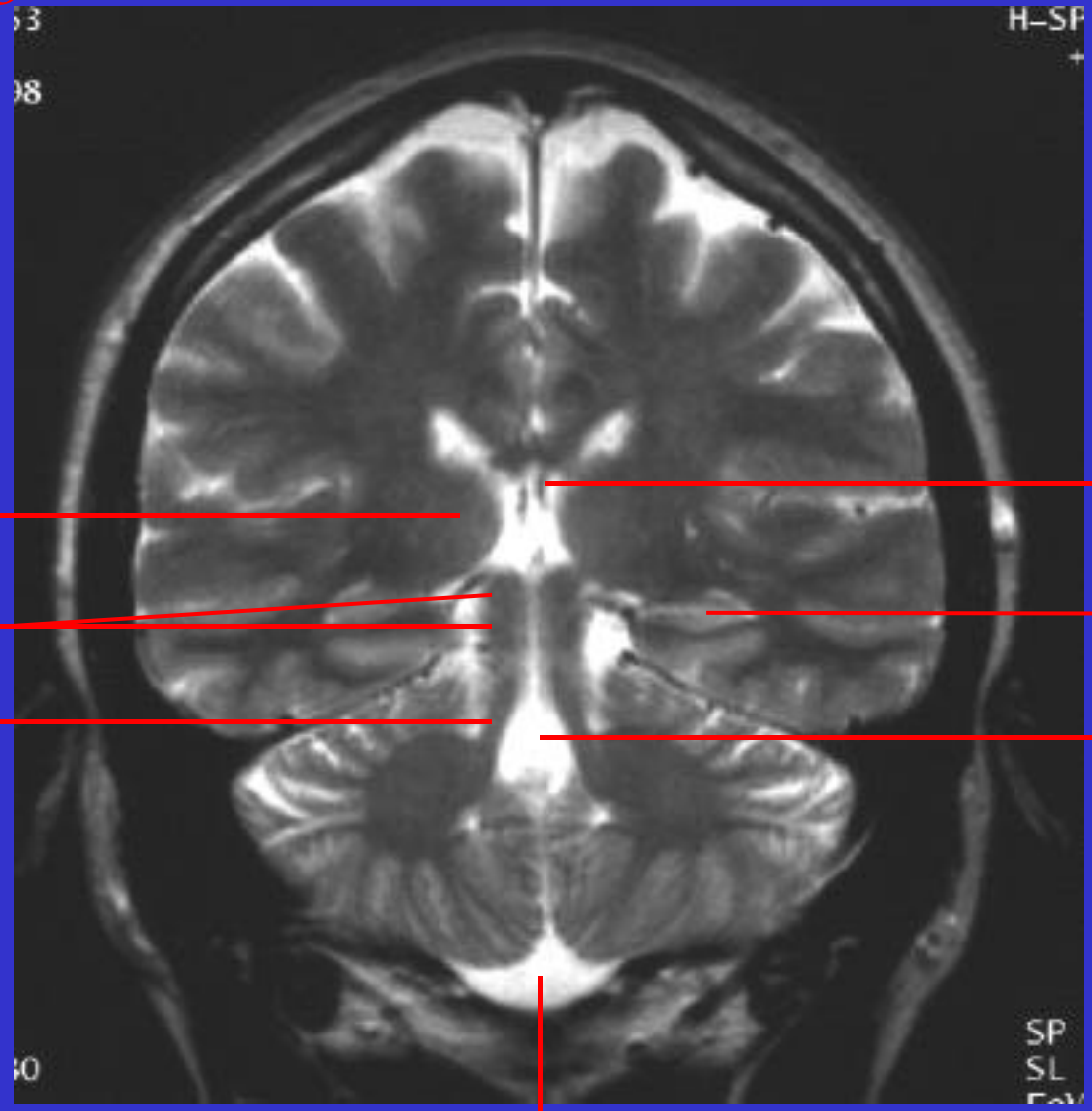


Click on button for answer.  
Leave button to hide answer.

T2 coronal MRI #13

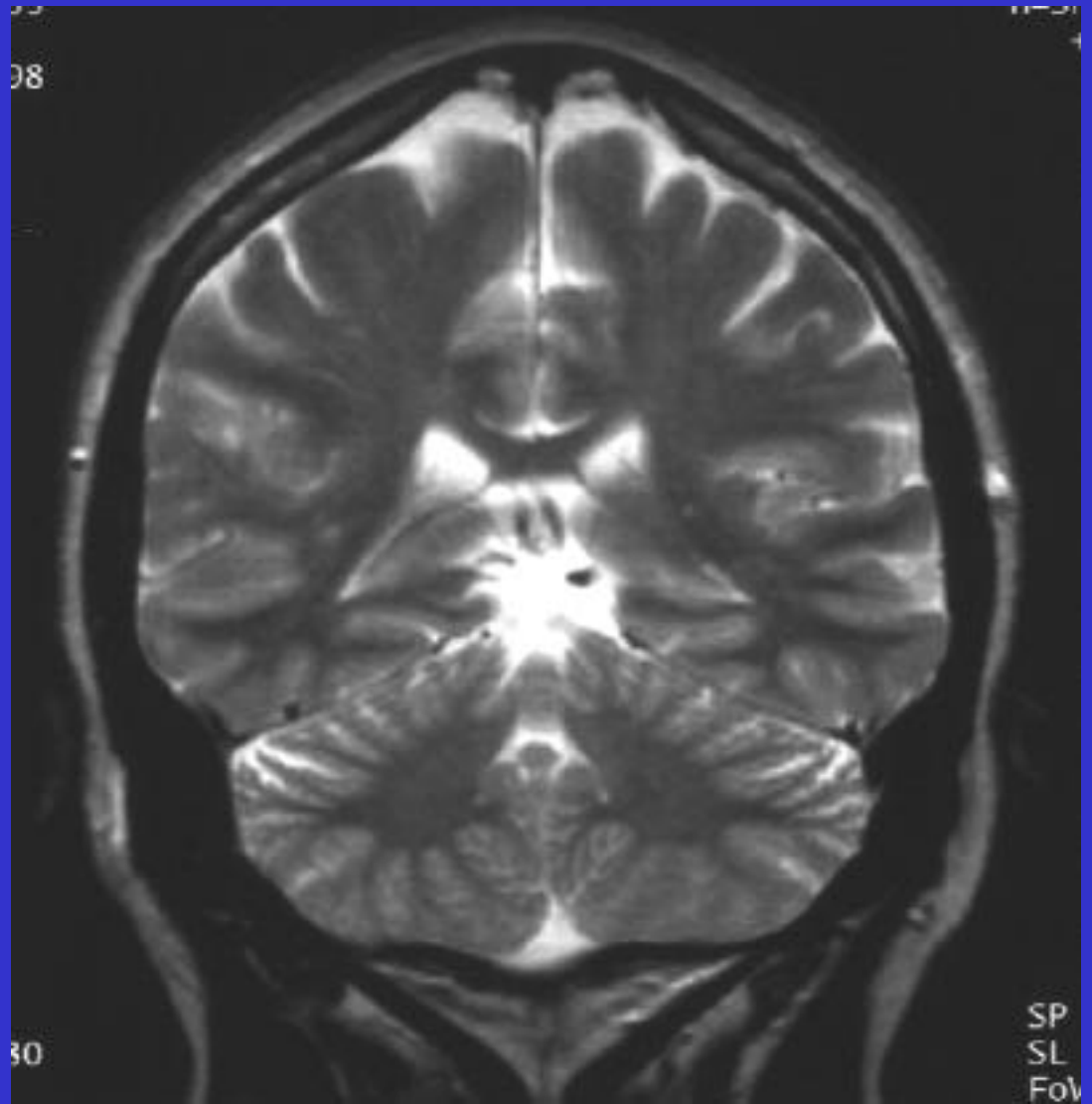


# T2 coronal MRI #13



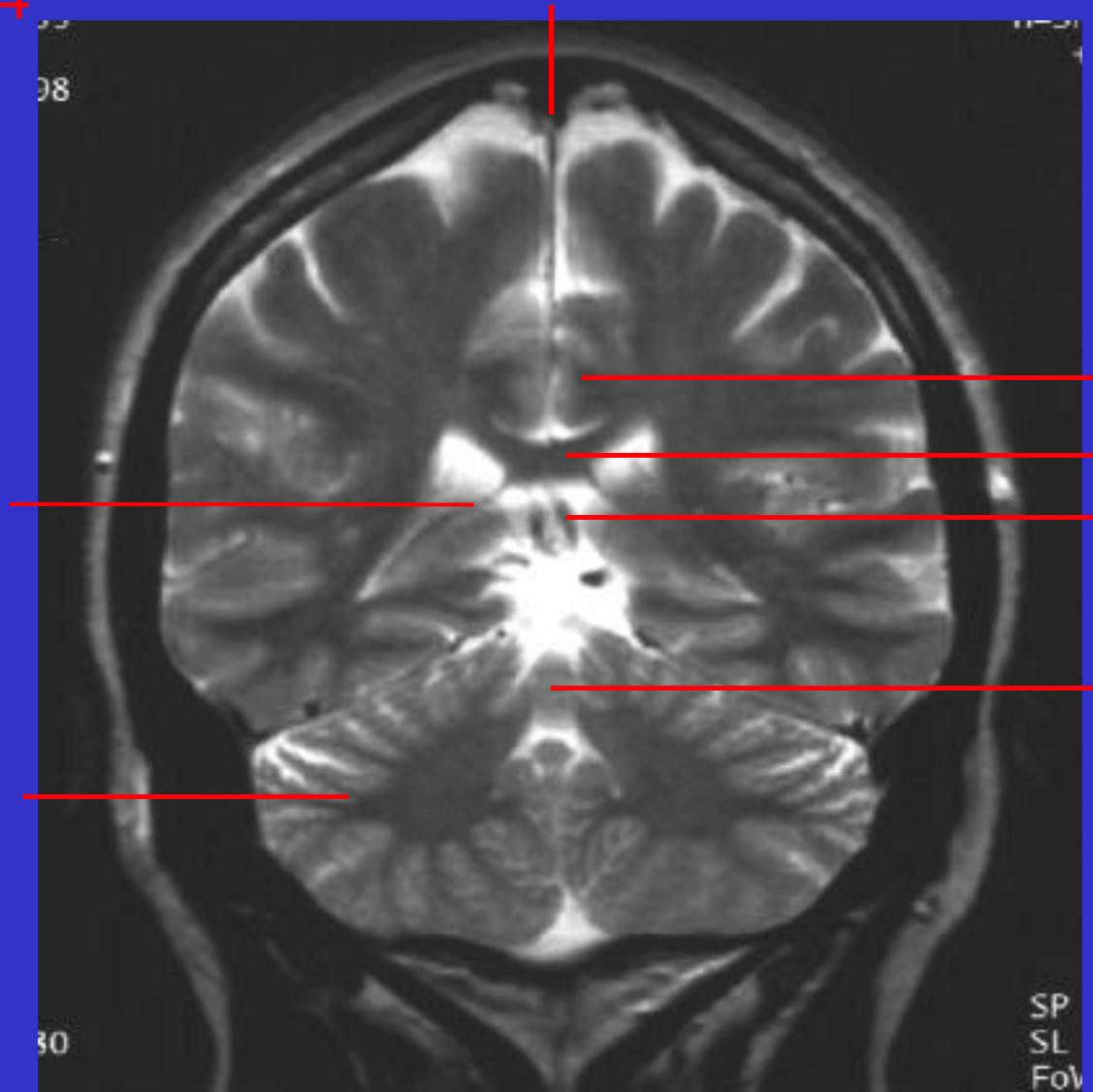
Click on button for answer.  
Leave button to hide answer.

# T2 coronal MRI #14



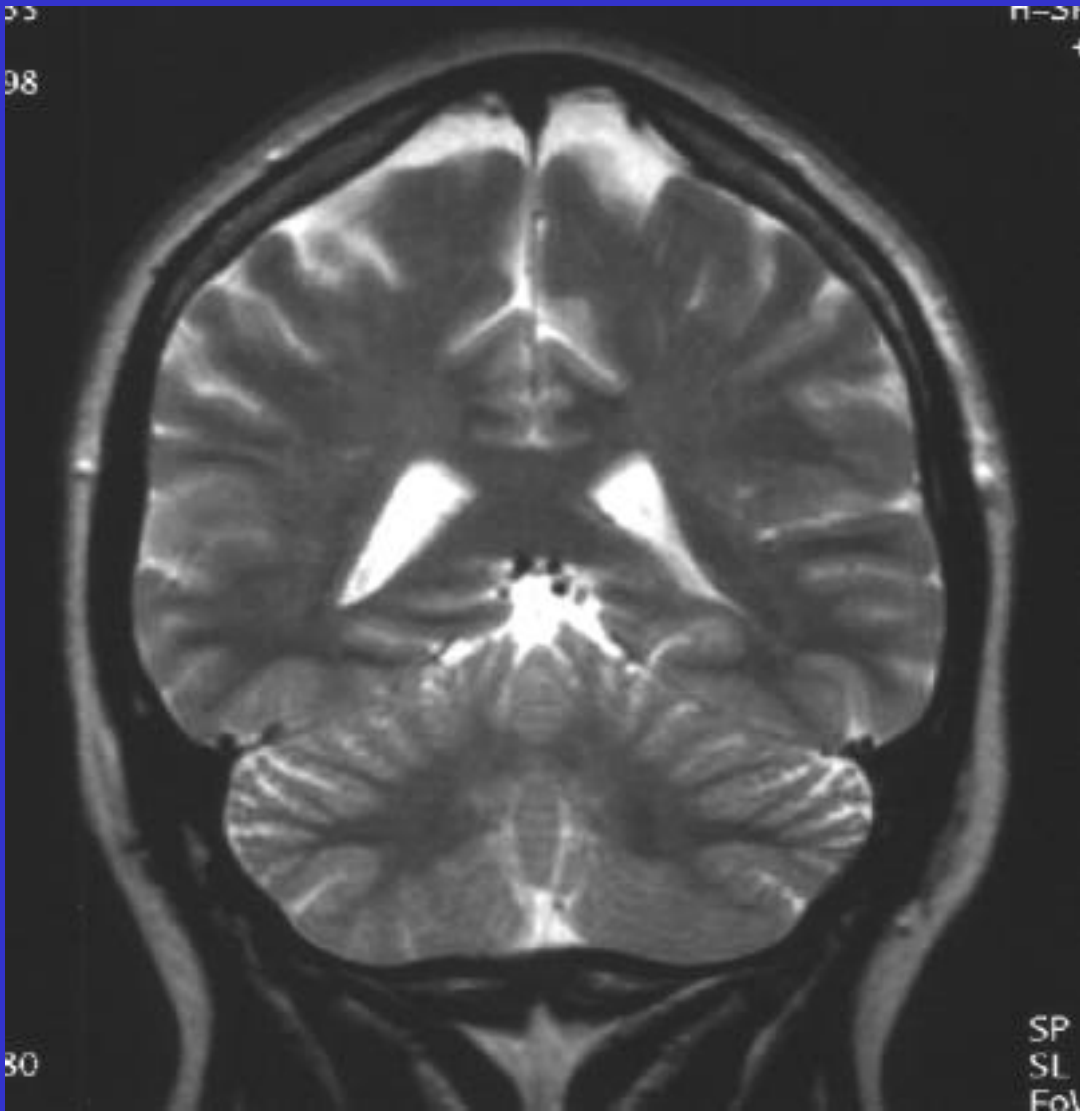


# T2 coronal MRI #14

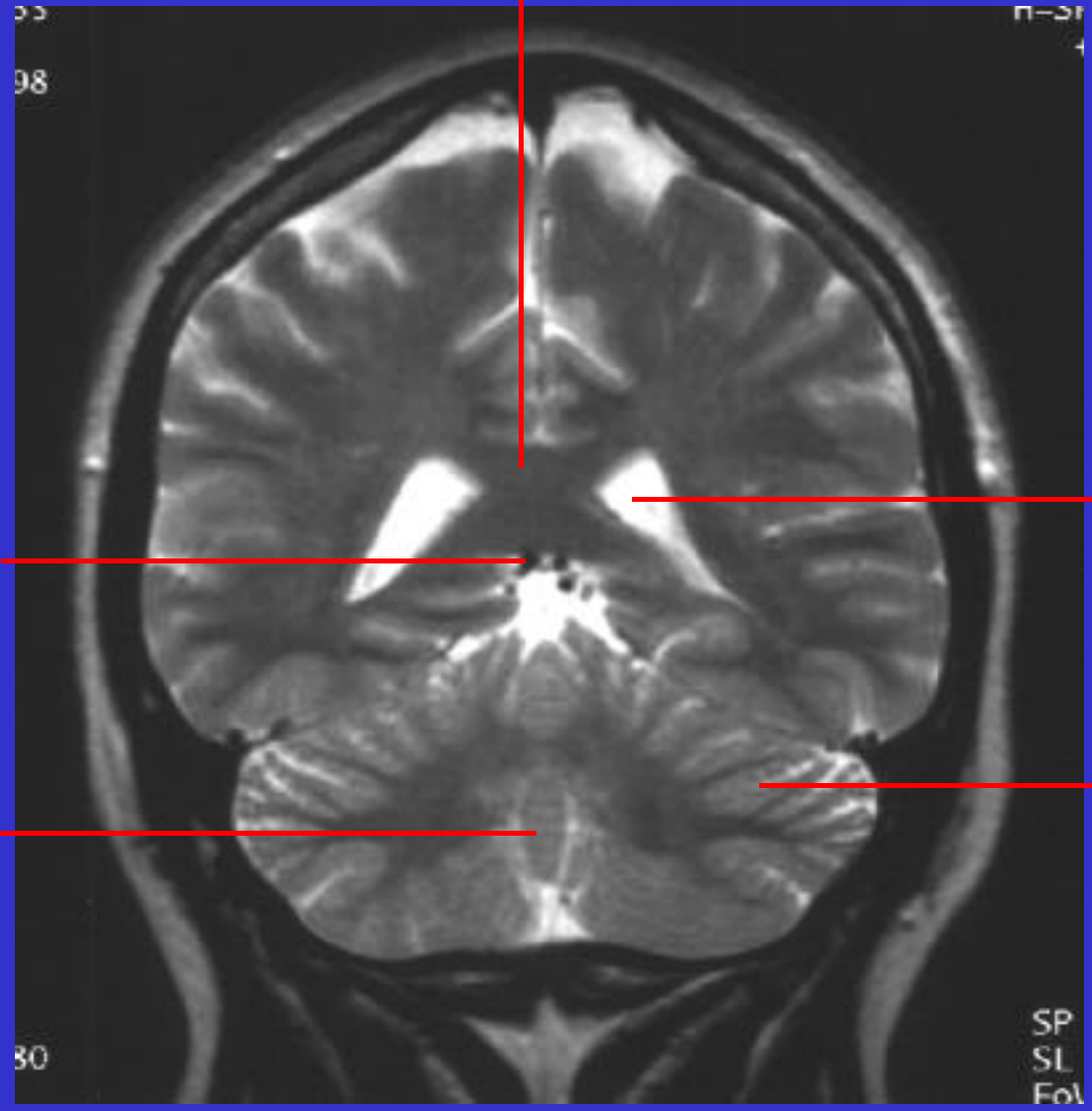


Click on button for answer.  
Leave button to hide answer.

T2 coronal MRI #15

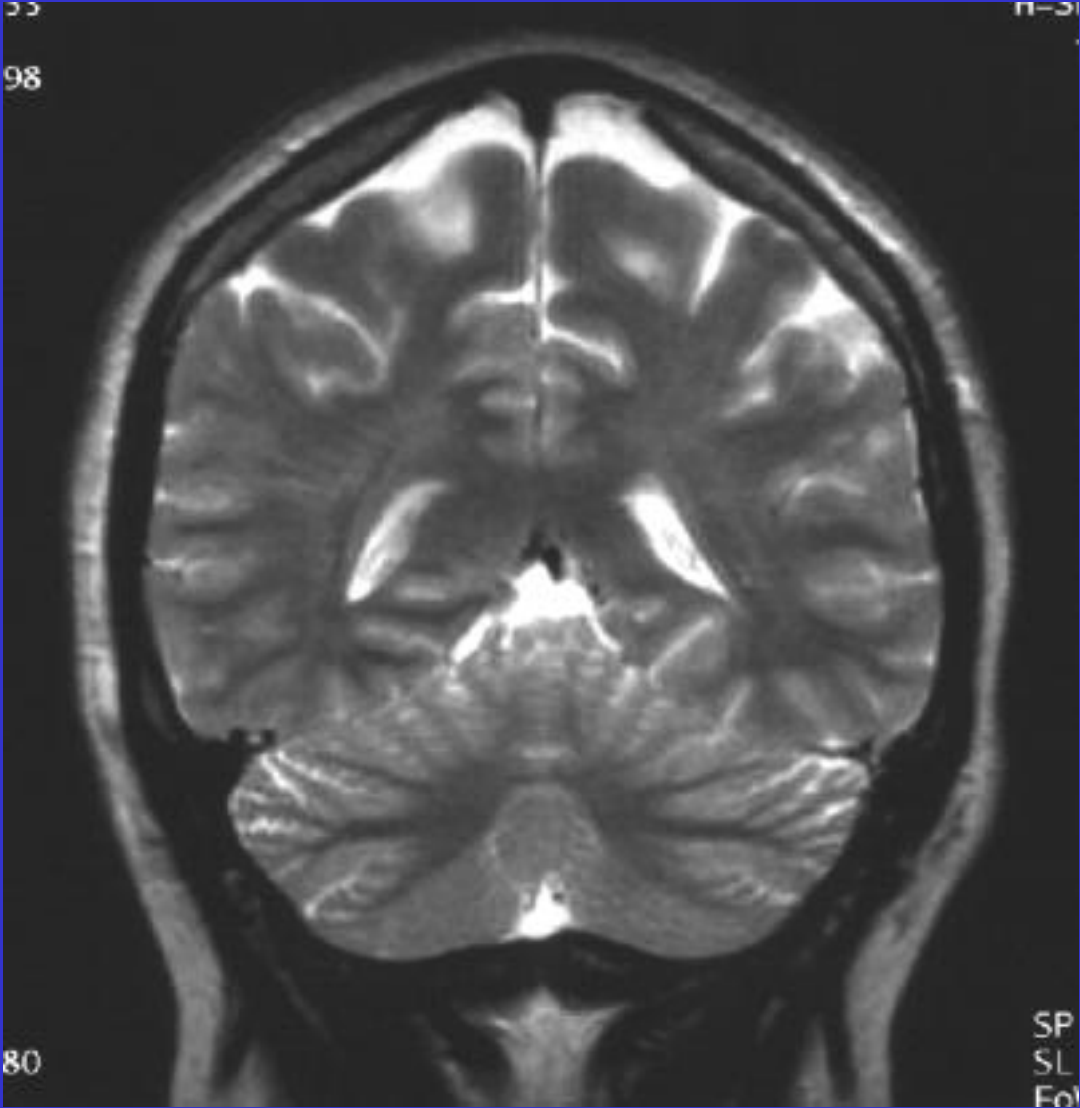


# T2 coronal MRI #15

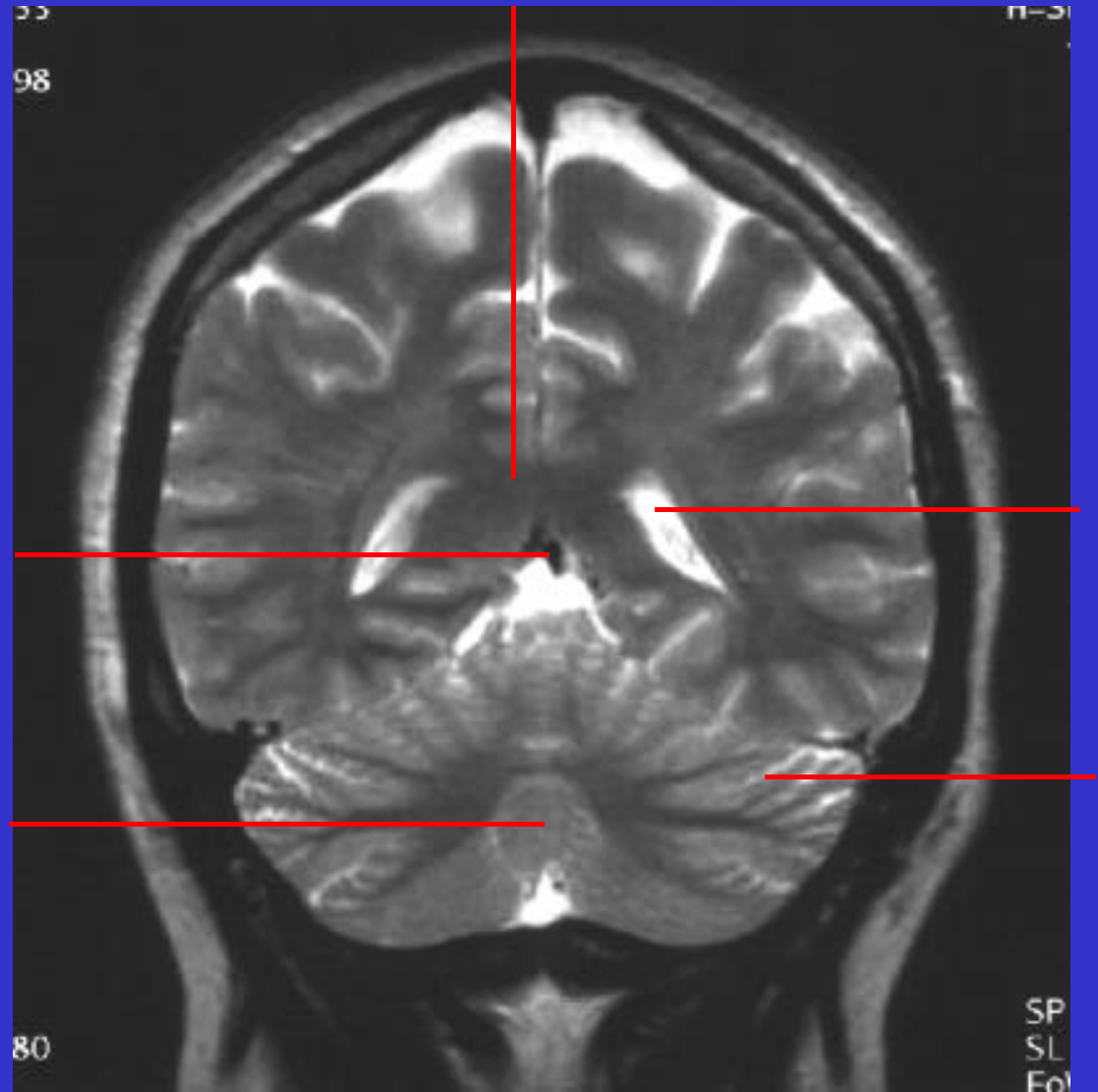


Click on button for answer.  
Leave button to hide answer.

T2 coronal MRI #16

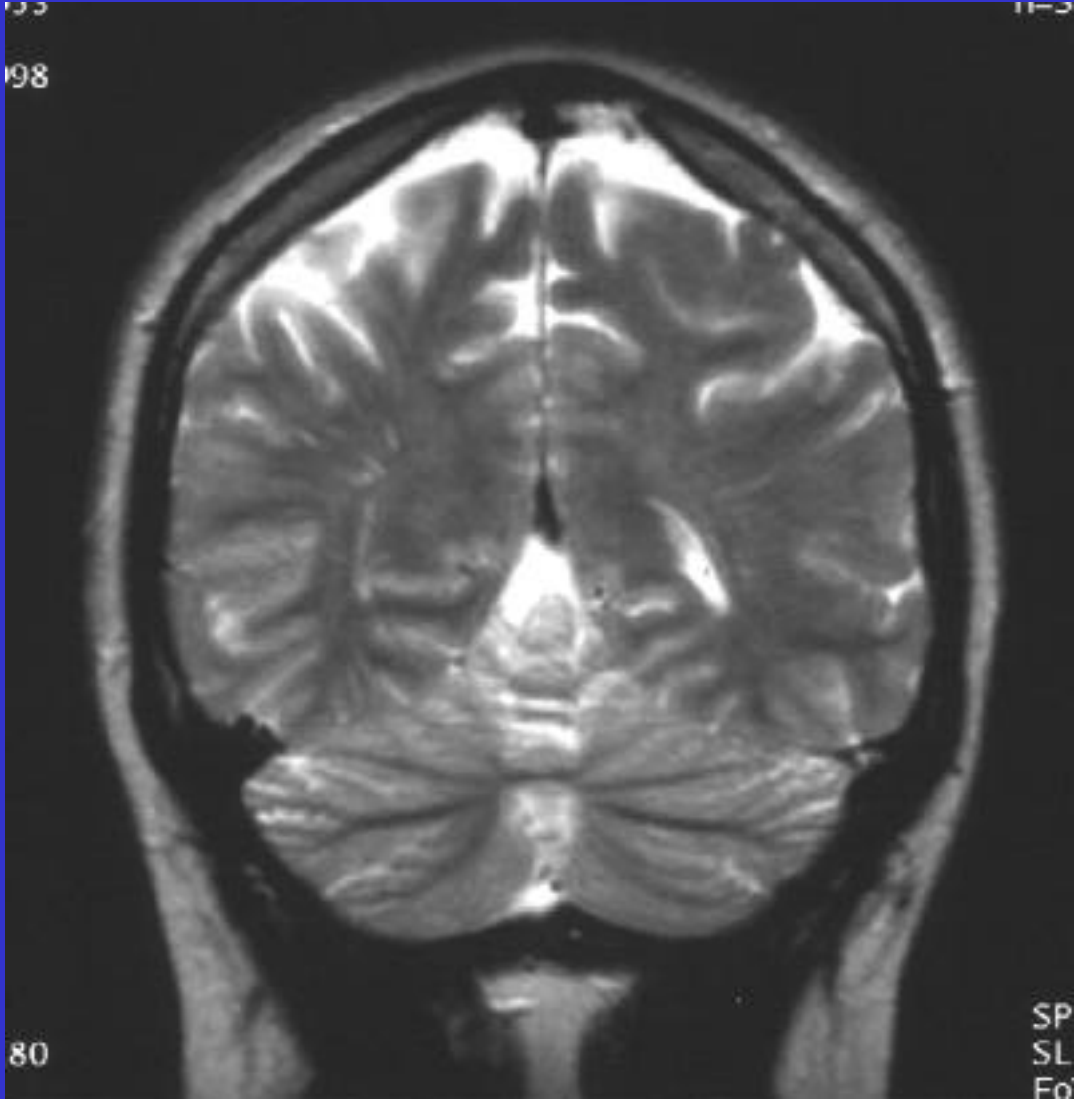


# T2 coronal MRI #16

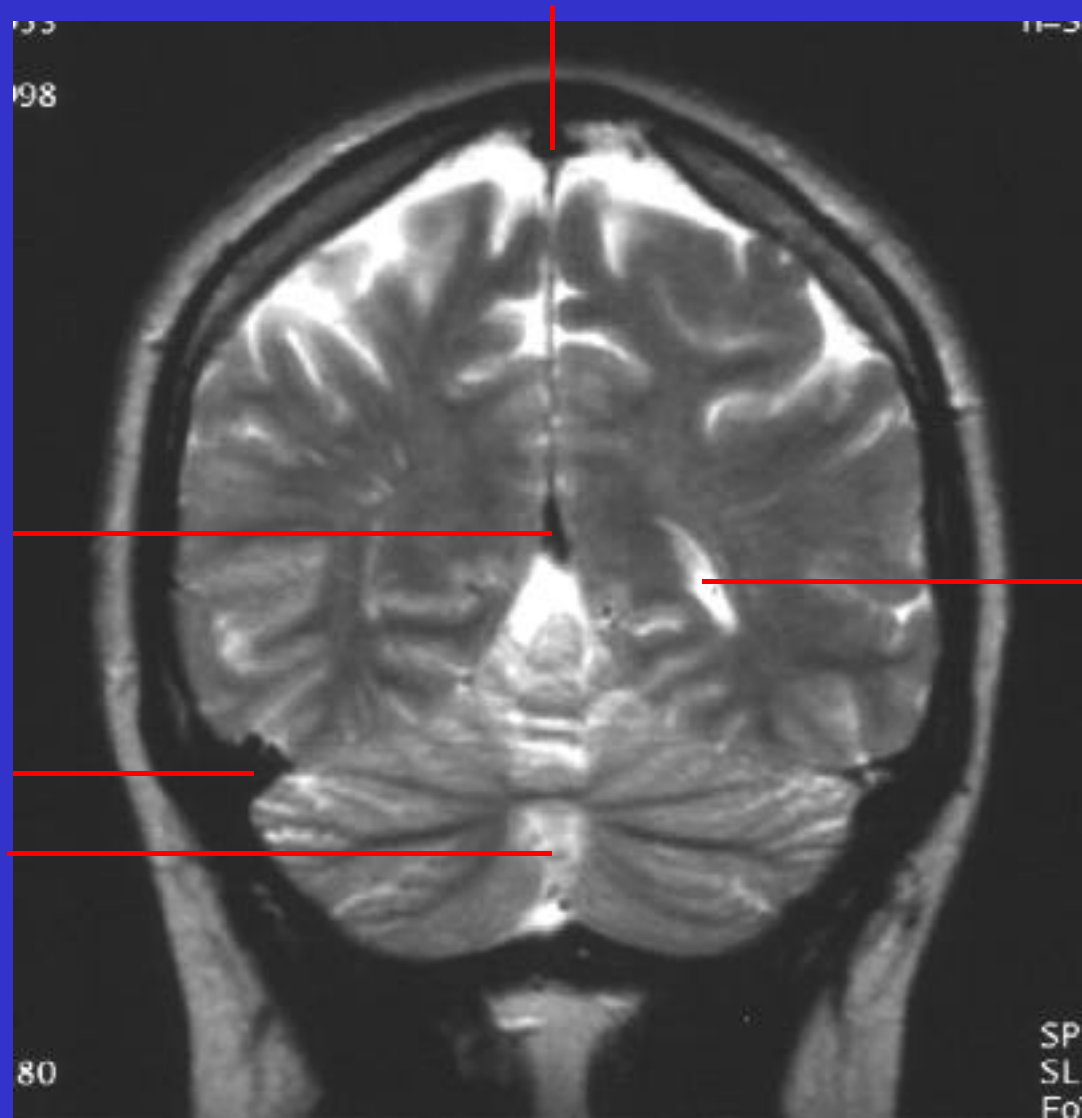


Click on button for answer.  
Leave button to hide answer.

T2 coronal MRI #17

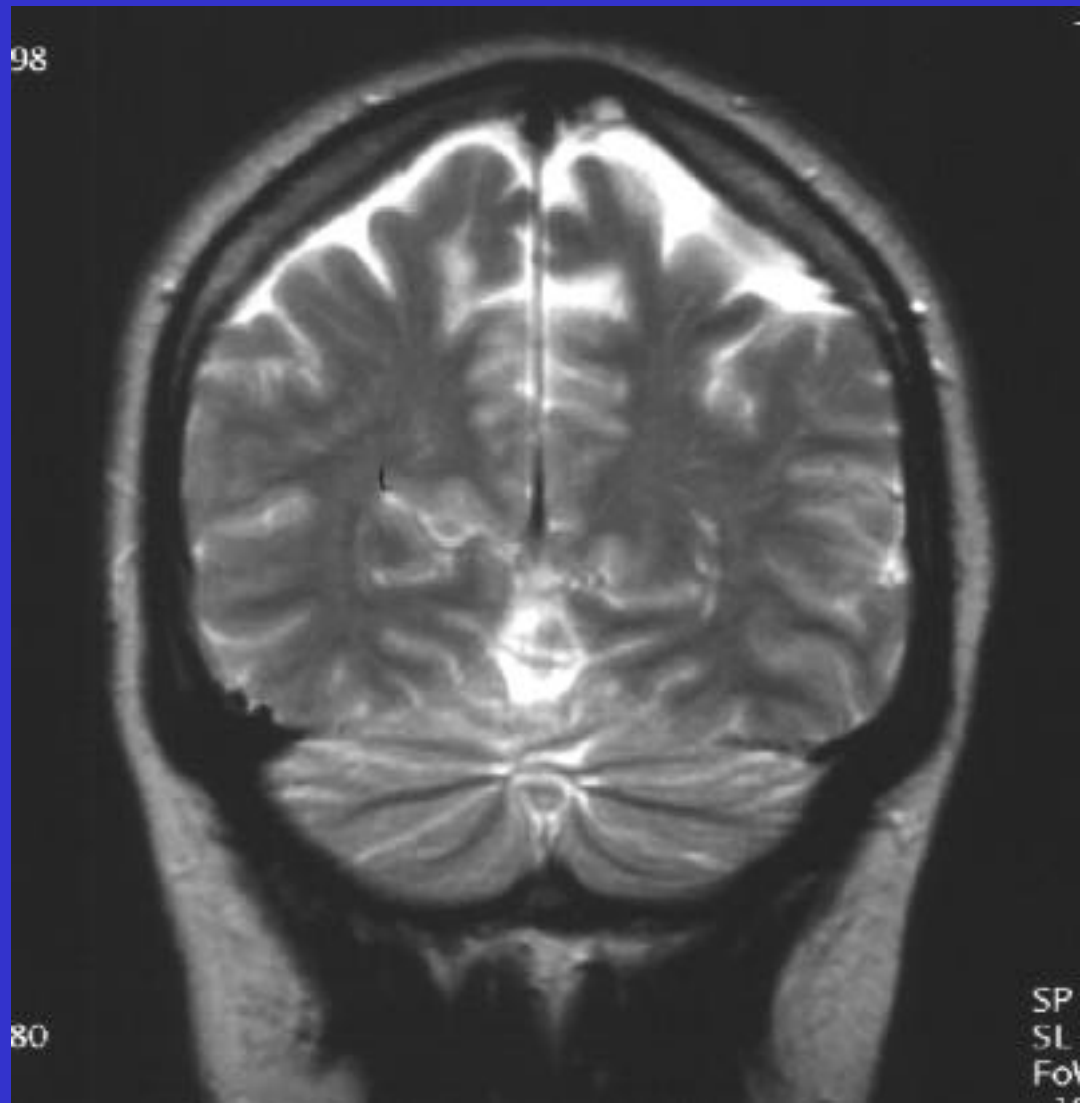


# T2 coronal MRI #17



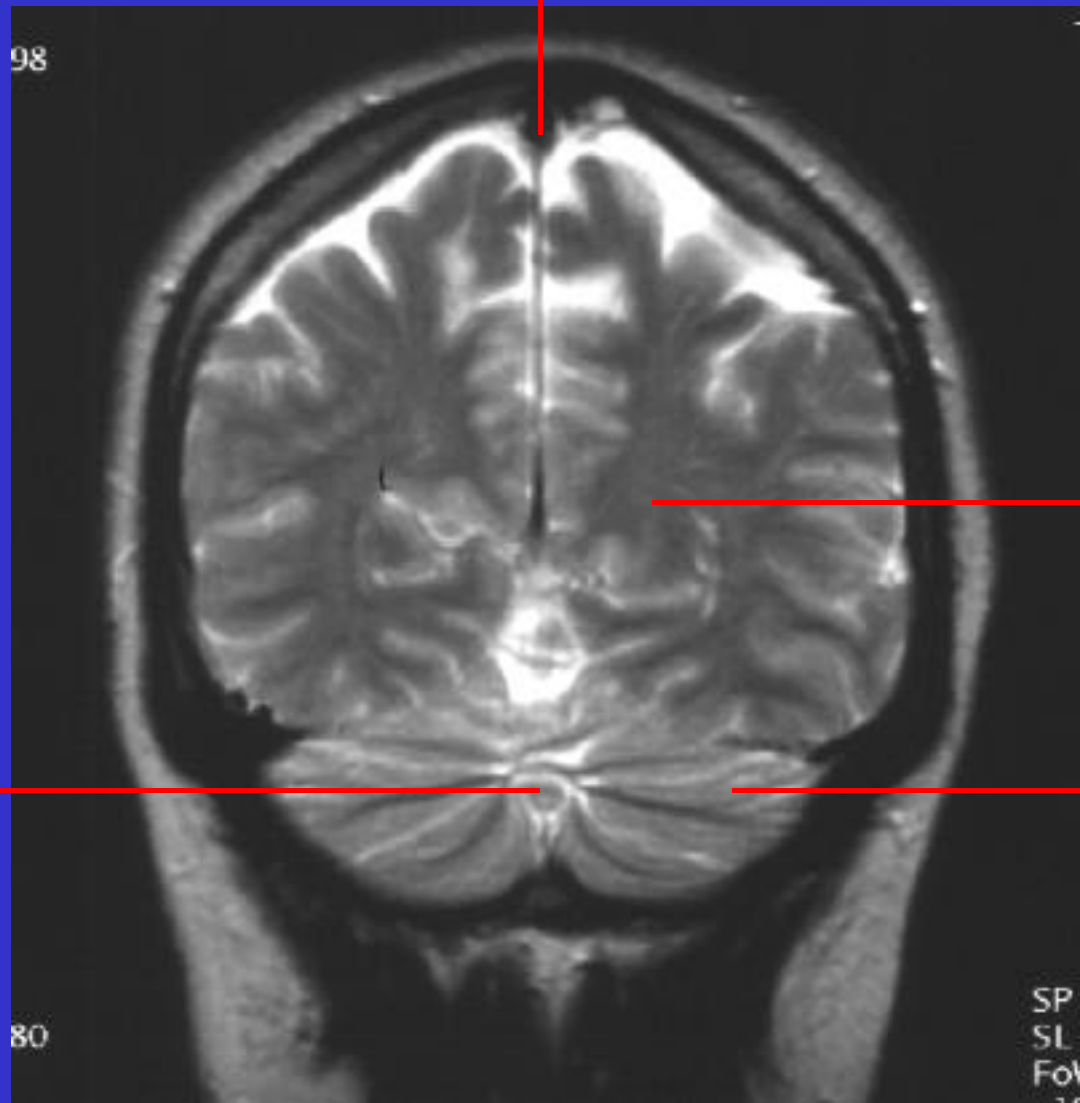
Click on button for answer.  
Leave button to hide answer.

# T2 coronal MRI #18



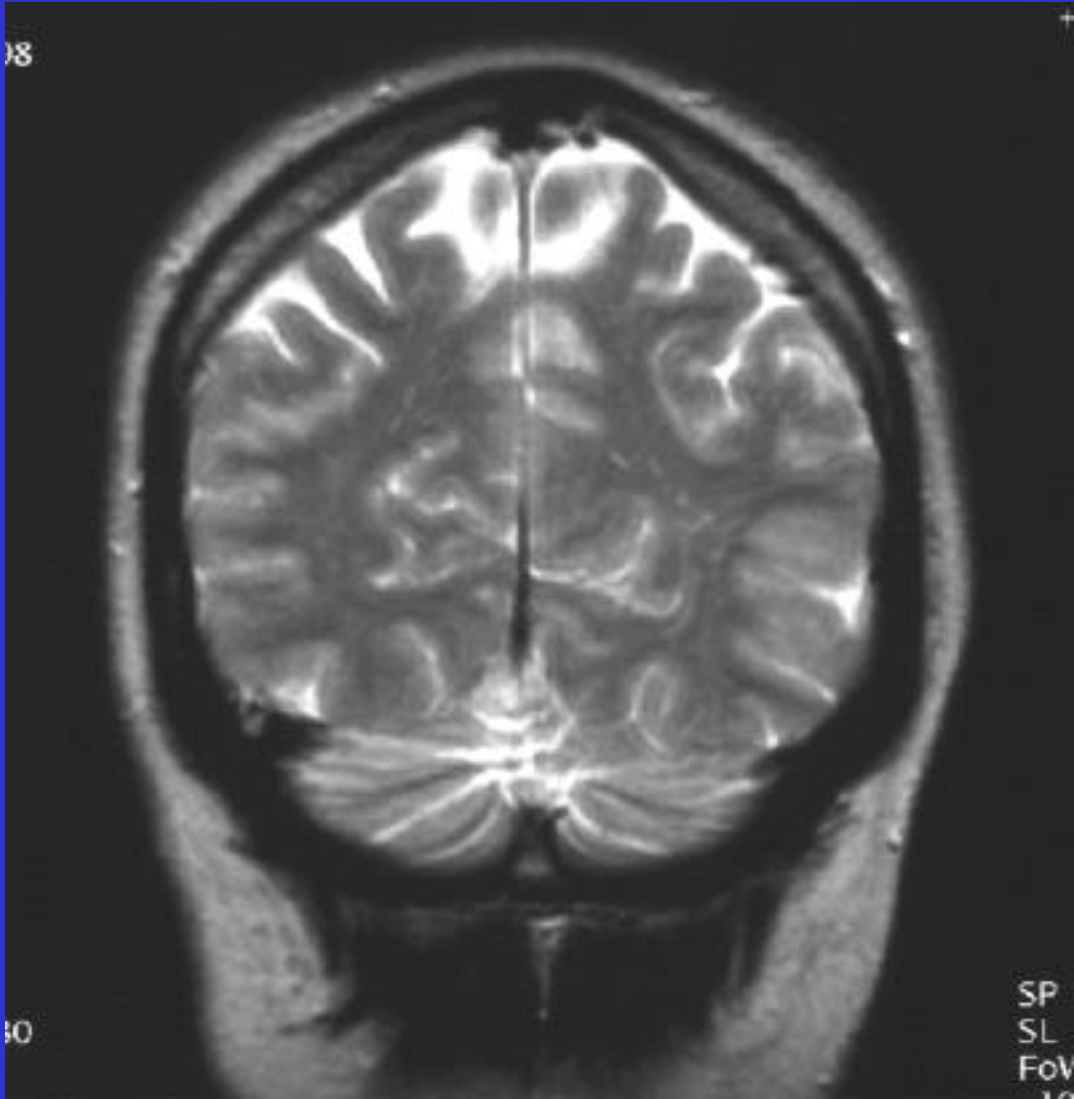


# T2 coronal MRI #18

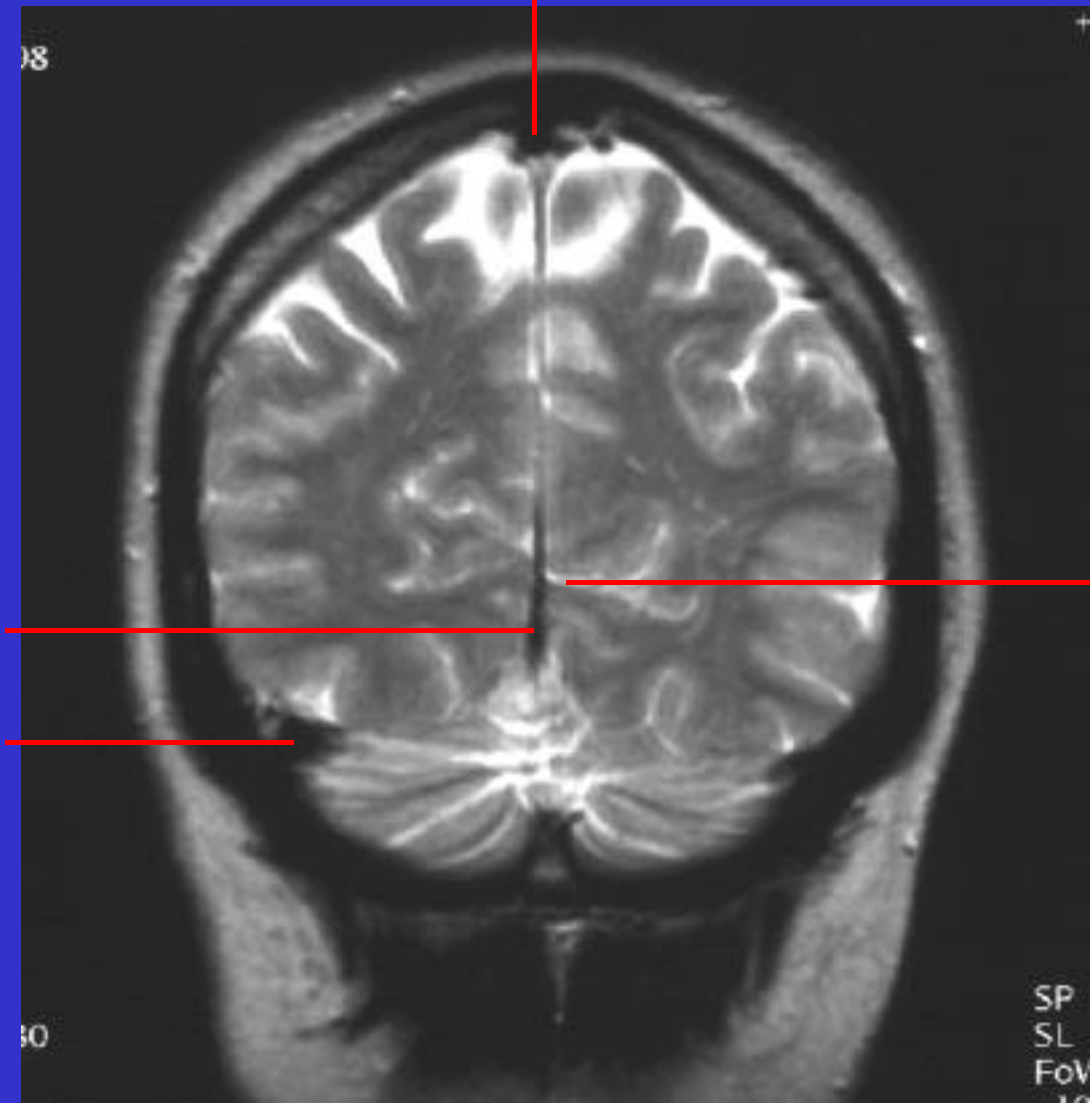


Click on button for answer.  
Leave button to hide answer.

T2 coronal MRI #19

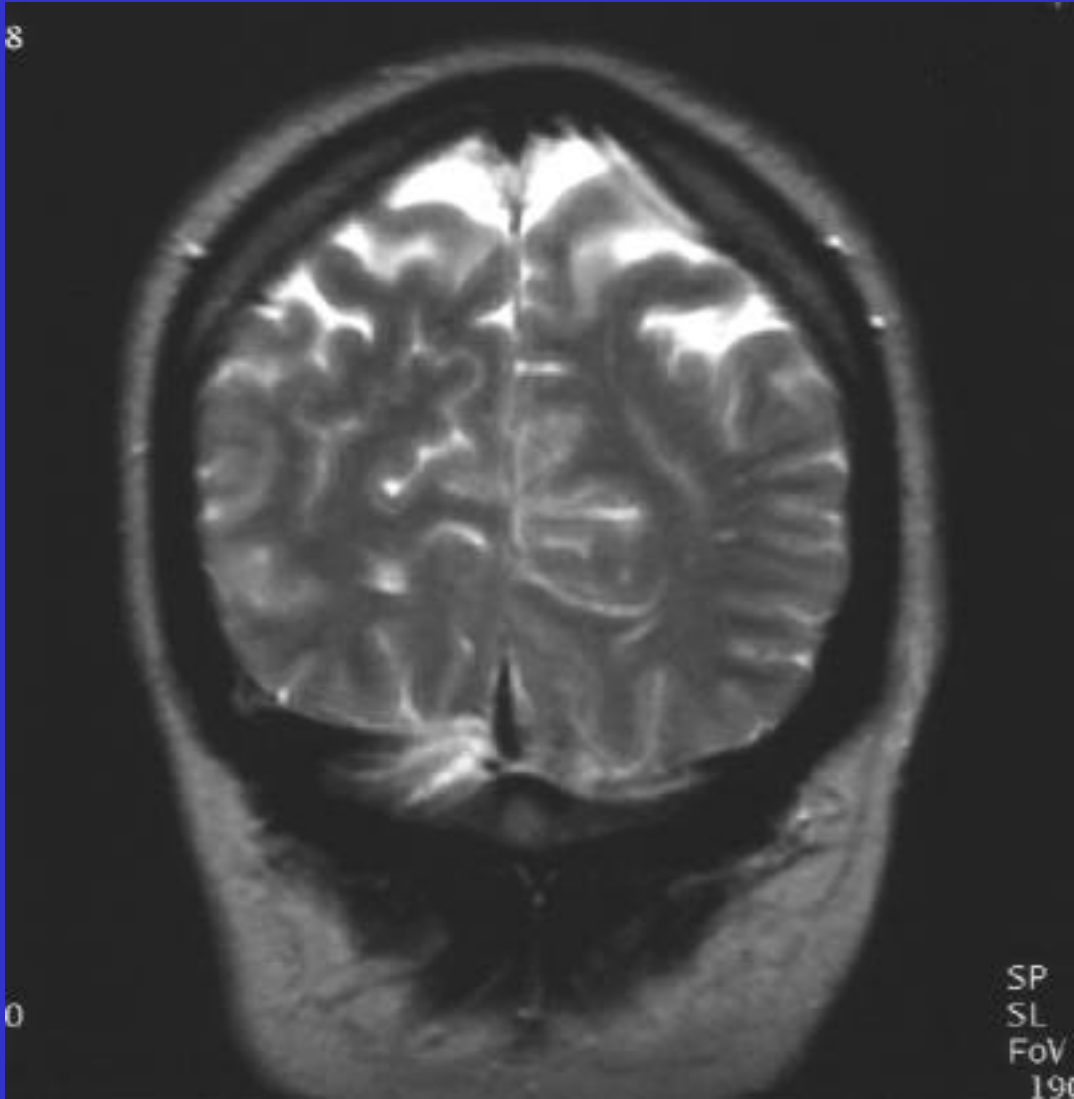


# T2 coronal MRI #19

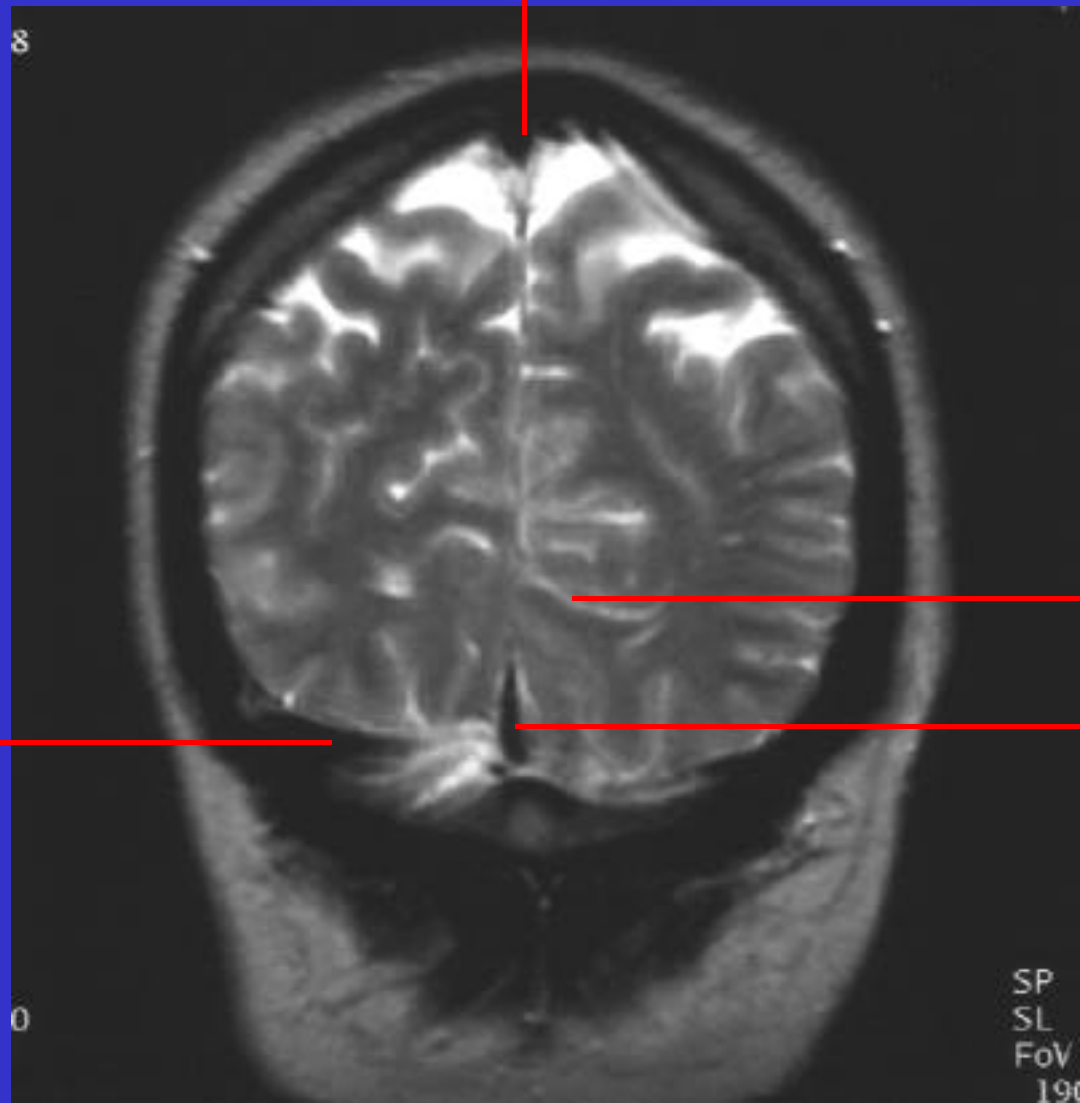


Click on button for answer.  
Leave button to hide answer.

T2 coronal MRI #20



# T2 coronal MRI #20



Click on button for answer.  
Leave button to hide answer.