

T2 axial MRI images

Copyright Rand Swenson

This may be reproduced for private, noncommercial, educational use. Not for sale or commercial distribution

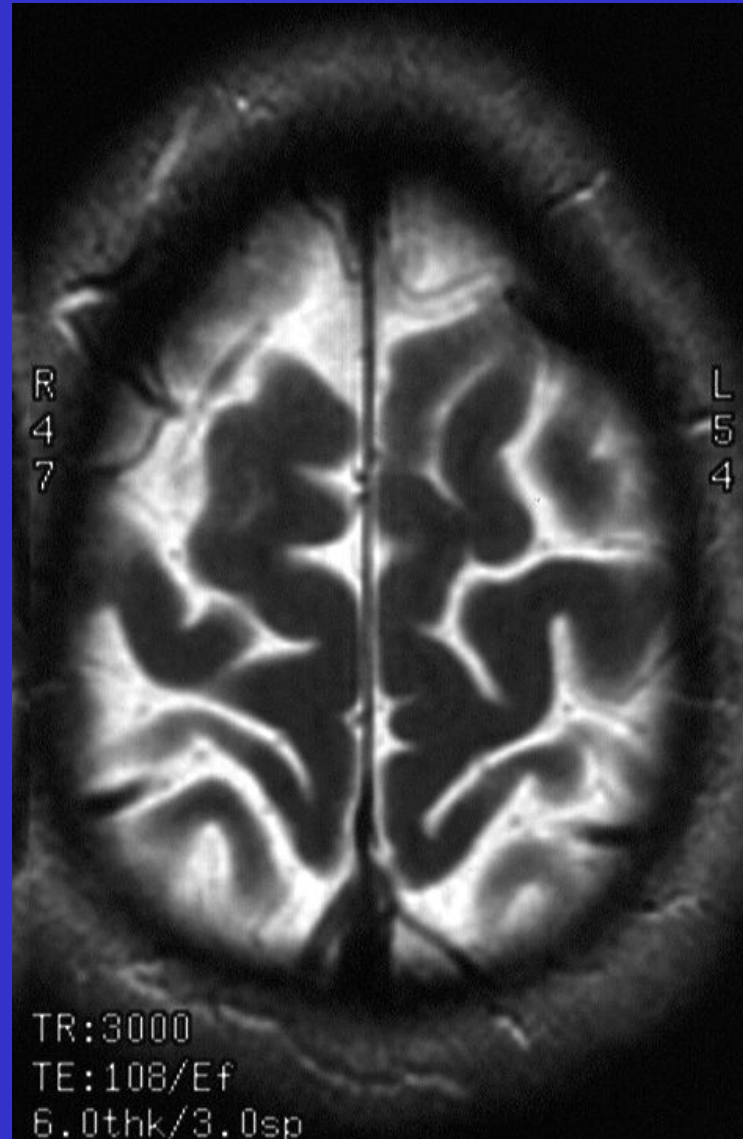
T2 axial MRI images

- T2 weighted images have a long TR (usually 2000-3000).
- They show water as bright signal. Therefore, CSF is bright and also any part of the normal brain (gray matter) or abnormal brain (edema, ischemic stroke, demyelination, tumor, etc) that has high water concentration will be bright.

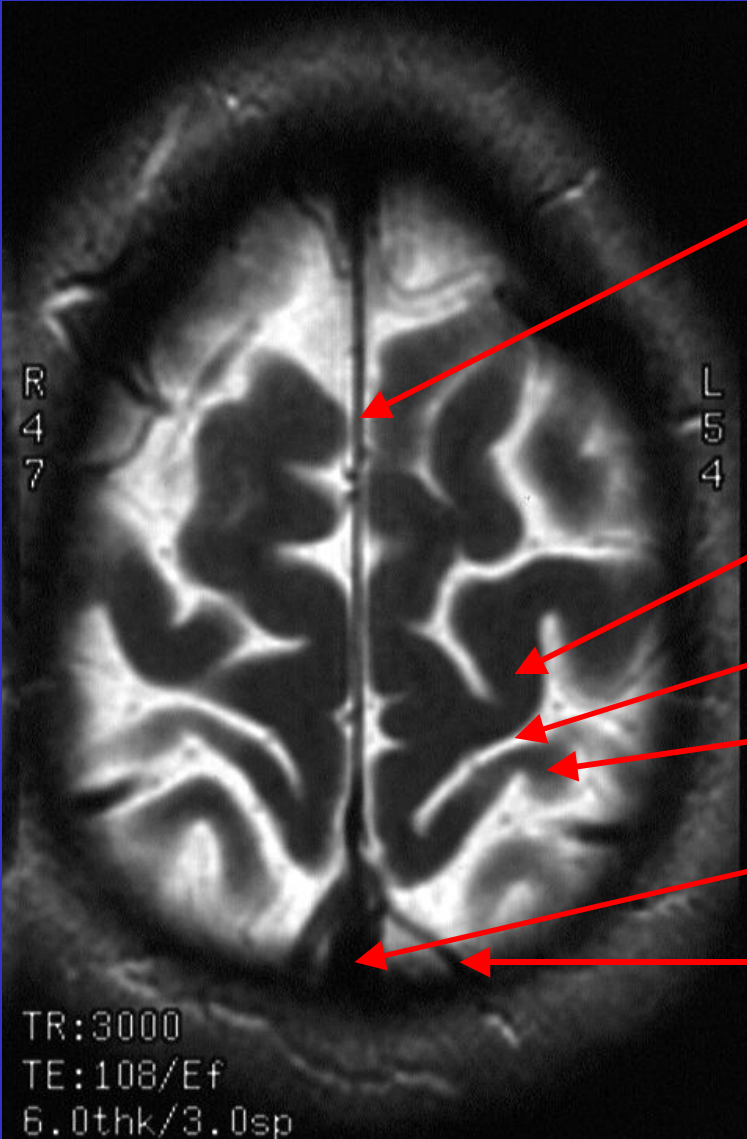
Instructions

- Review the MR image
- The following slide will duplicate the image and will have arrows labeled with a question button.
- Click the question button for identification of the structure.
- As soon as your pointer leaves the question button, the response will be hidden.

T2 axial MRI

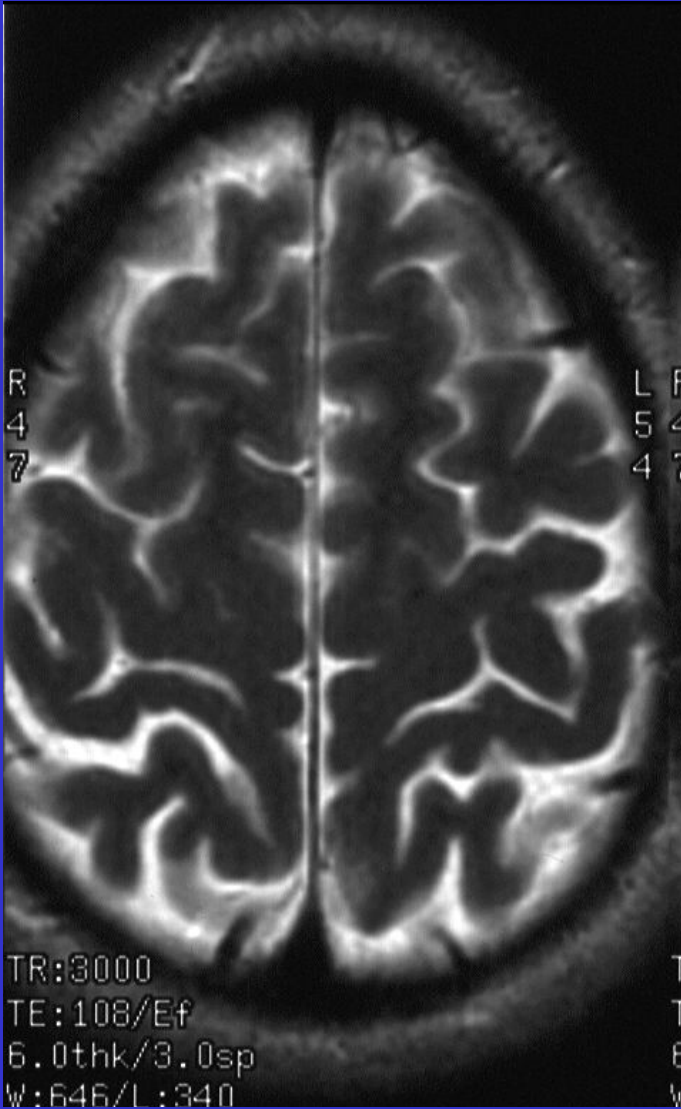


T2 axial MRI

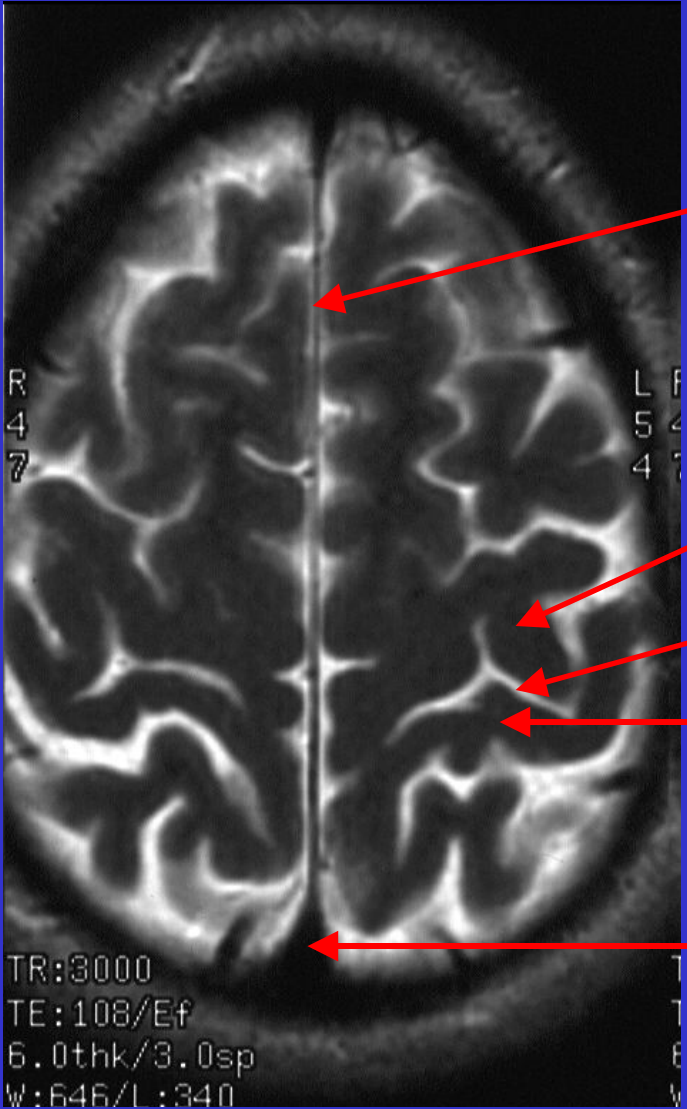


Click on button for answer.
Leave button to hide answer.

T2 axial MRI

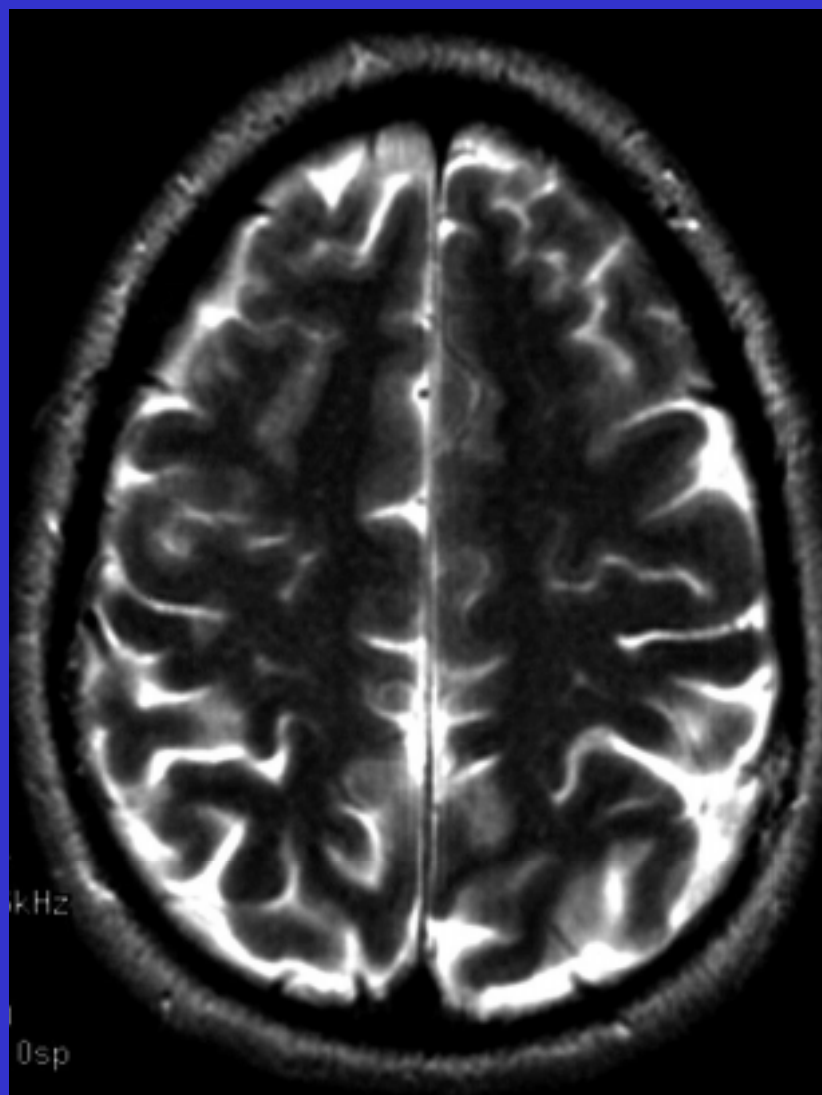


T2 axial MRI

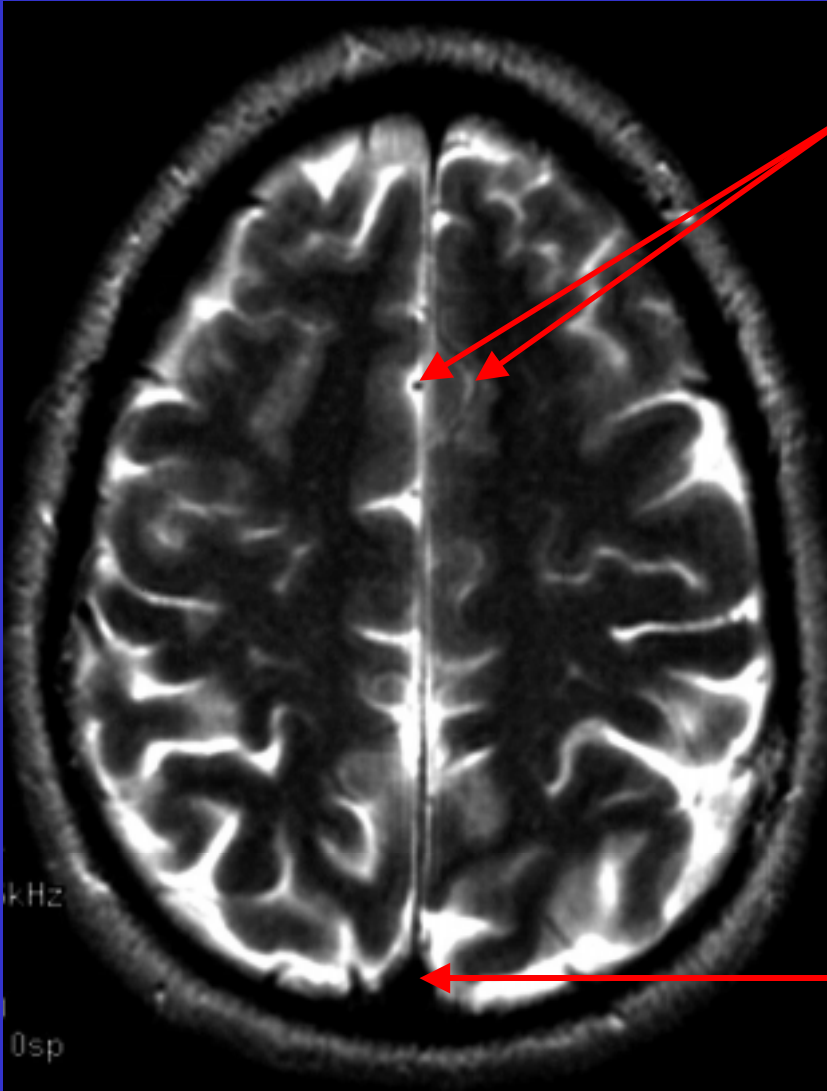


Click on button for answer.
Leave button to hide answer.

T2 axial MRI

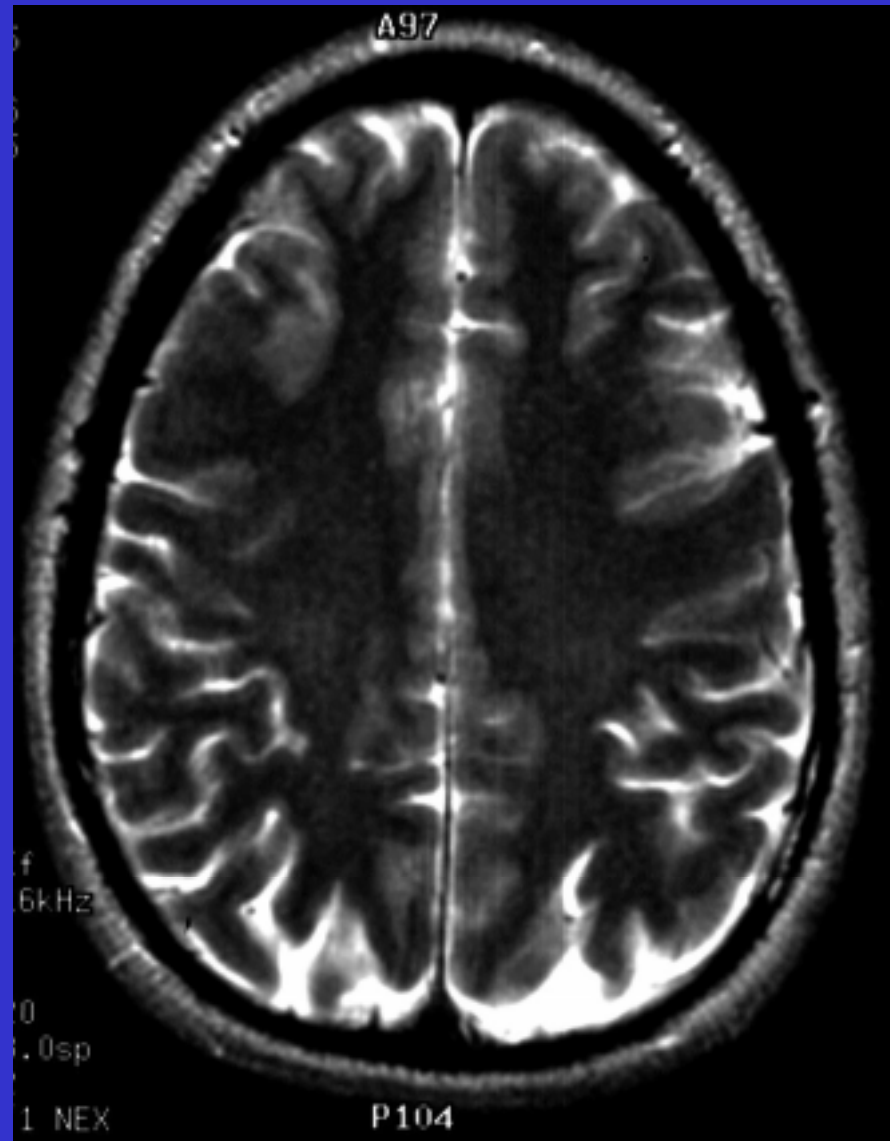


T2 axial MRI

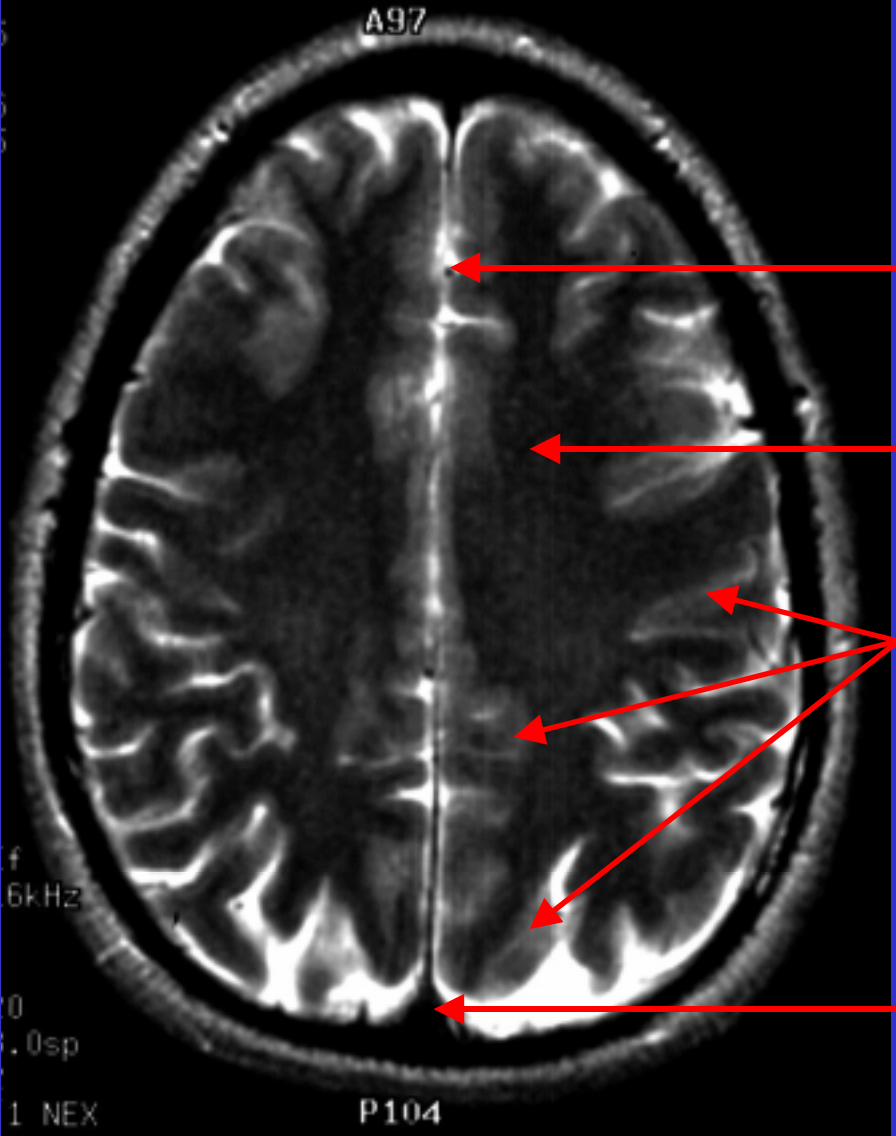


Click on button for answer.
Leave button to hide answer.

T2 axial MRI



T2 axial MRI



Click on button for answer.
Leave button to hide answer.

T2 axial MRI

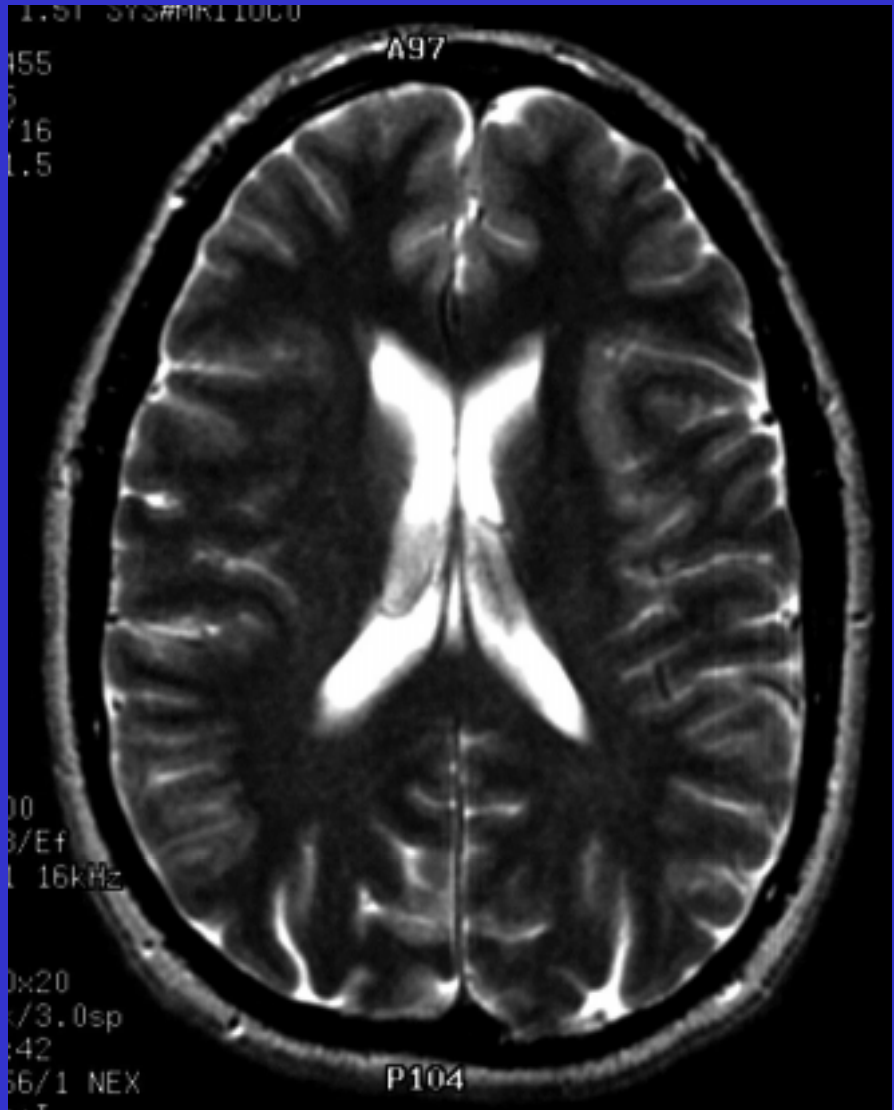


T2 axial MRI

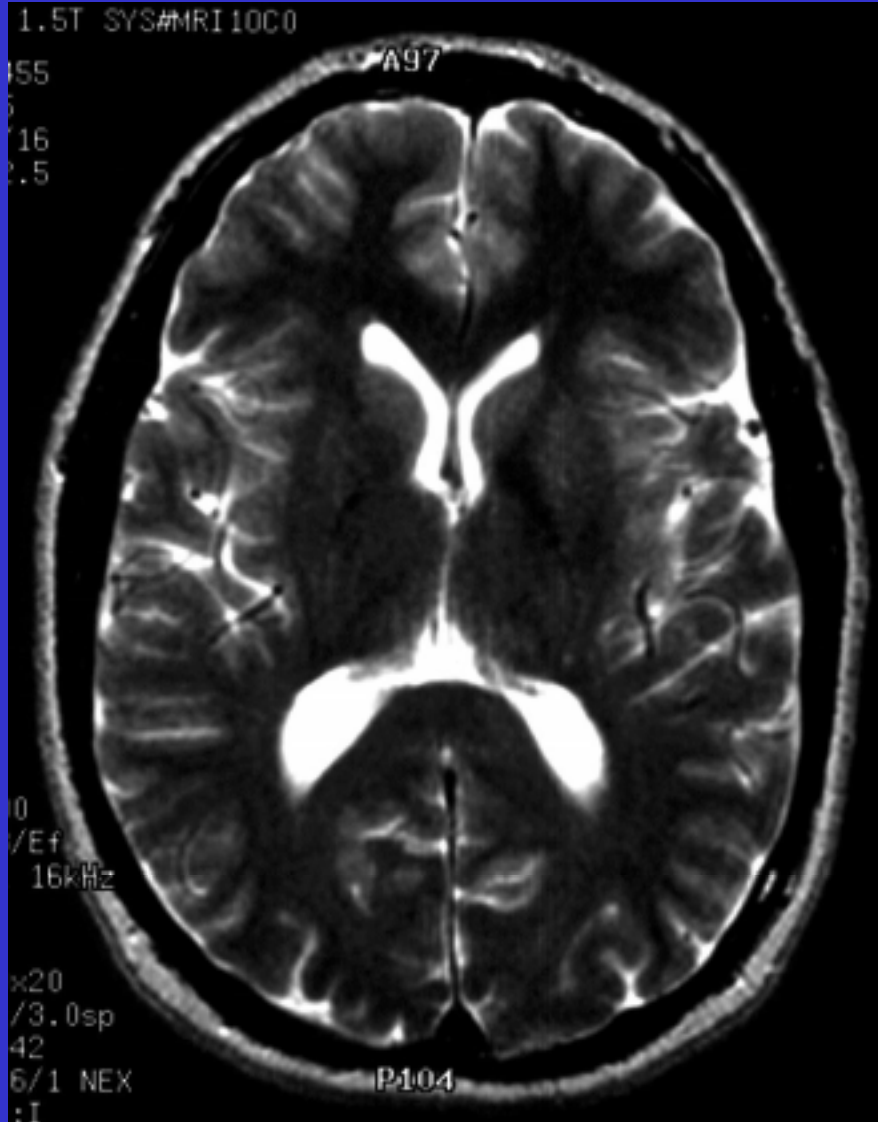


Click on button for answer.
Leave button to hide answer.

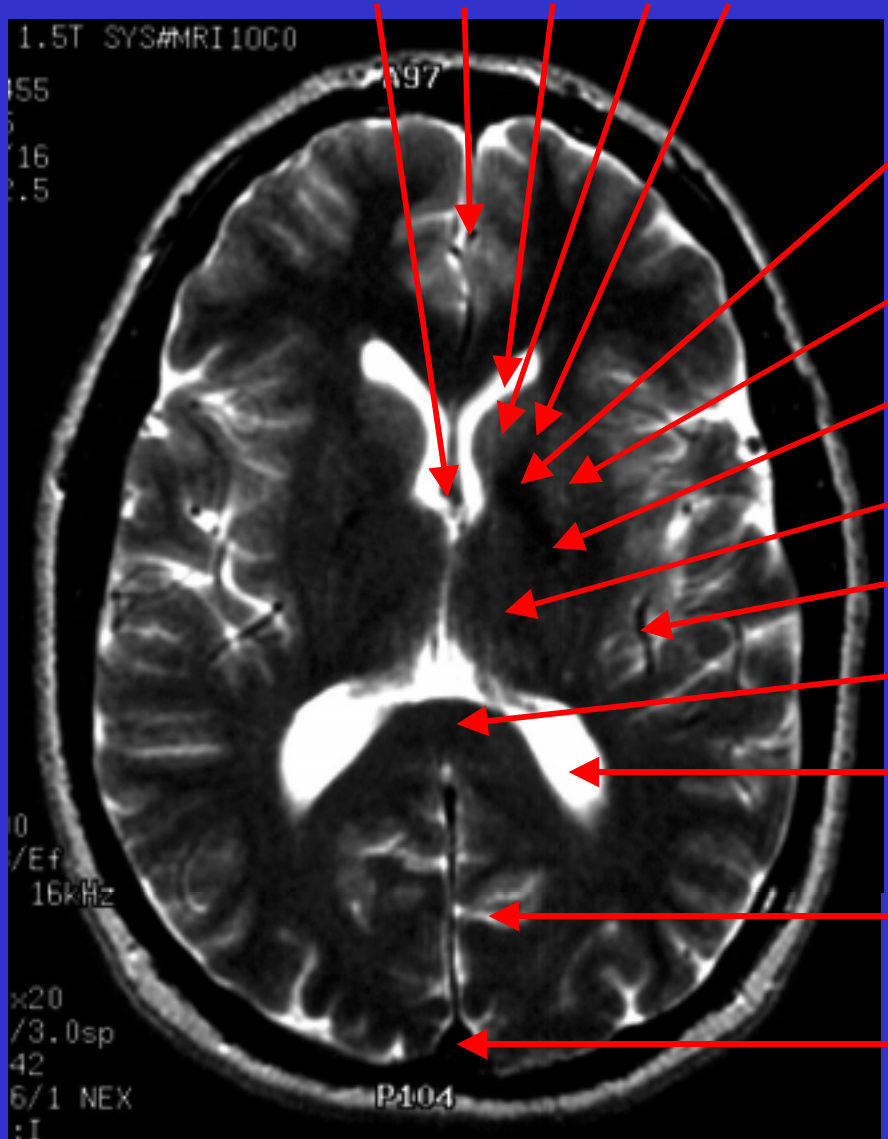
T2 axial MRI



T2 axial MRI

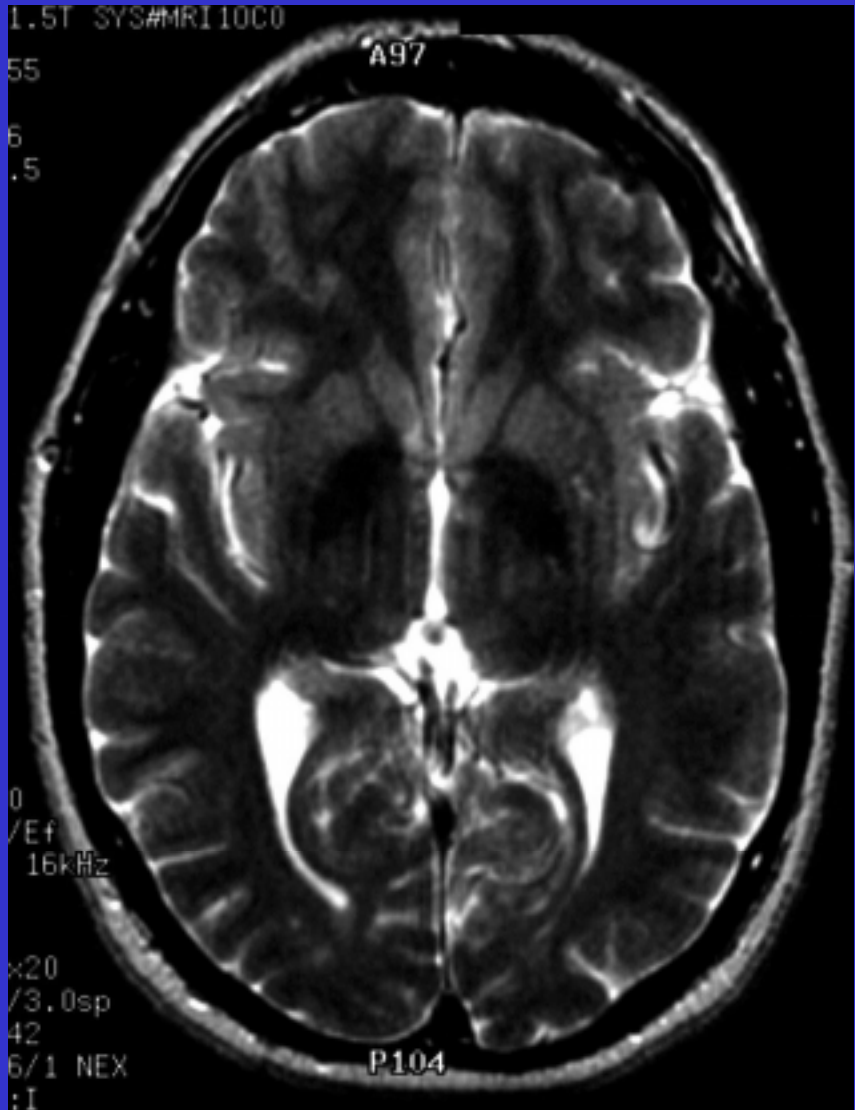


T2 axial MRI

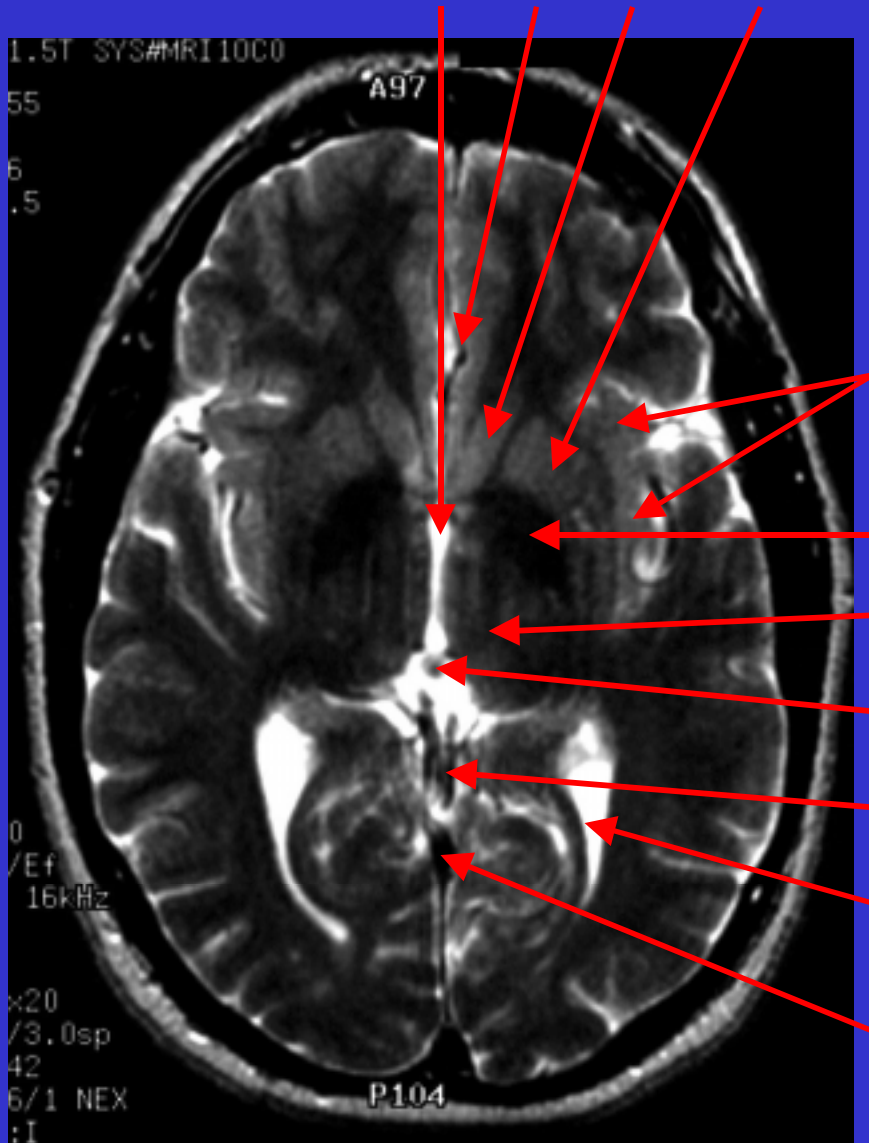


Click on button for answer.
Leave button to hide answer.

T2 axial MRI

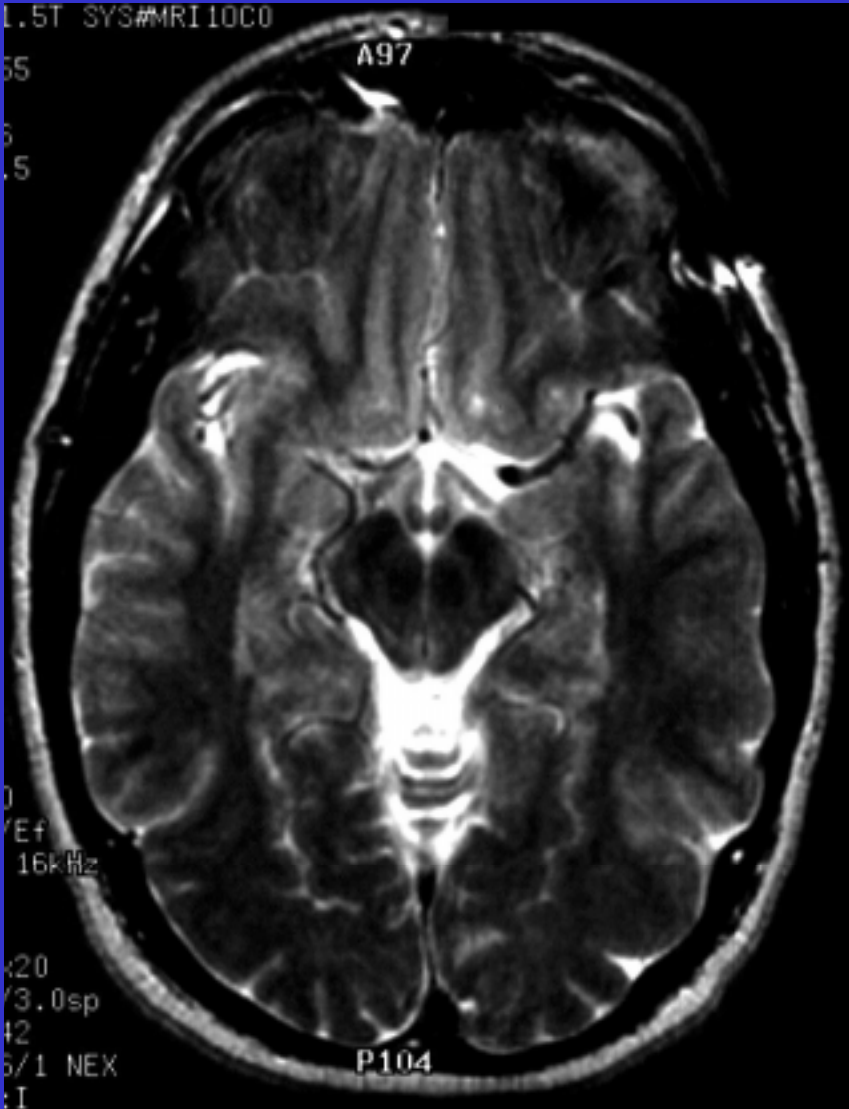


T2 axial MRI

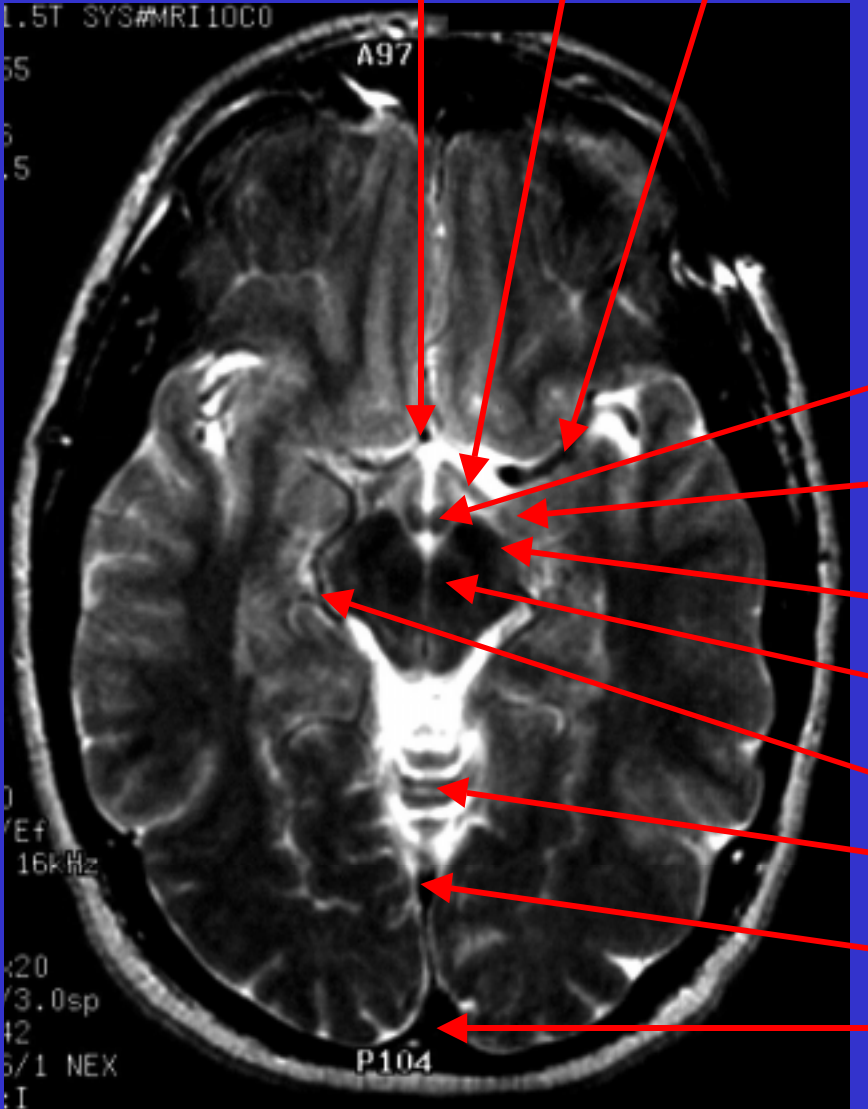


Click on button for answer.
Leave button to hide answer.

T2 axial MRI

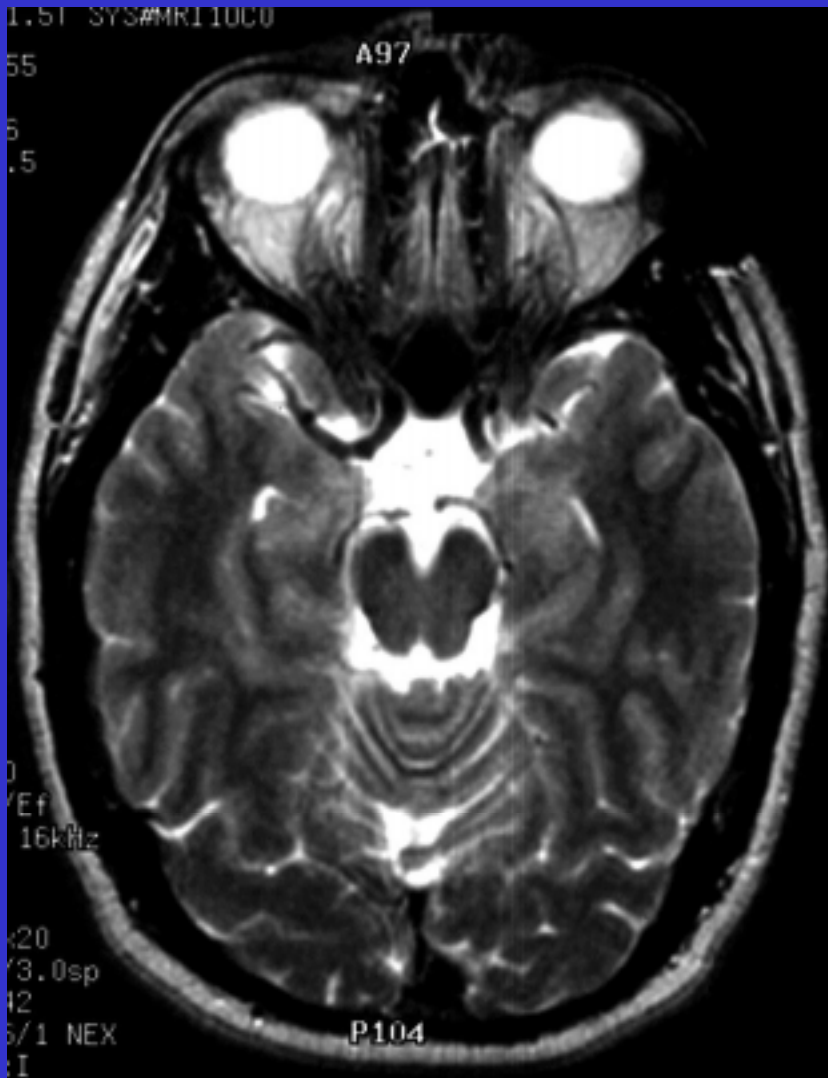


T2 axial MRI



Click on button for answer.
Leave button to hide answer.

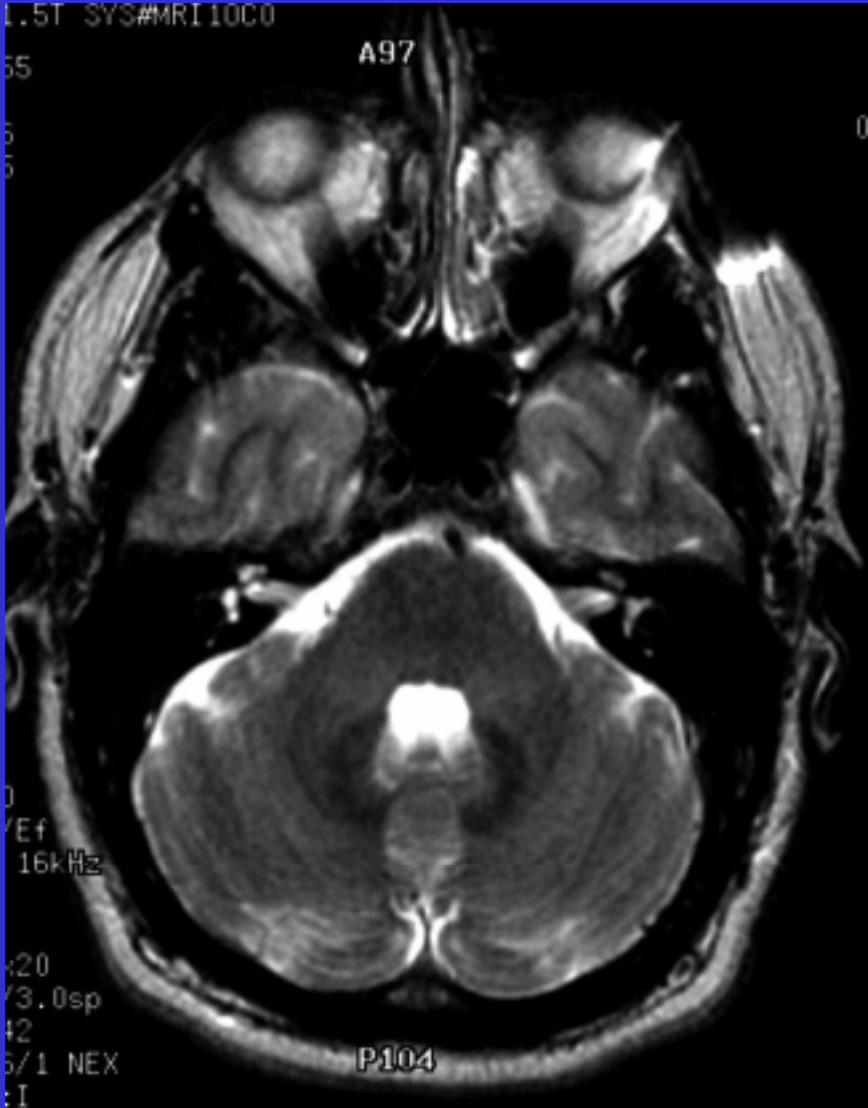
T2 axial MRI



T2 axial MRI



T2 axial MRI

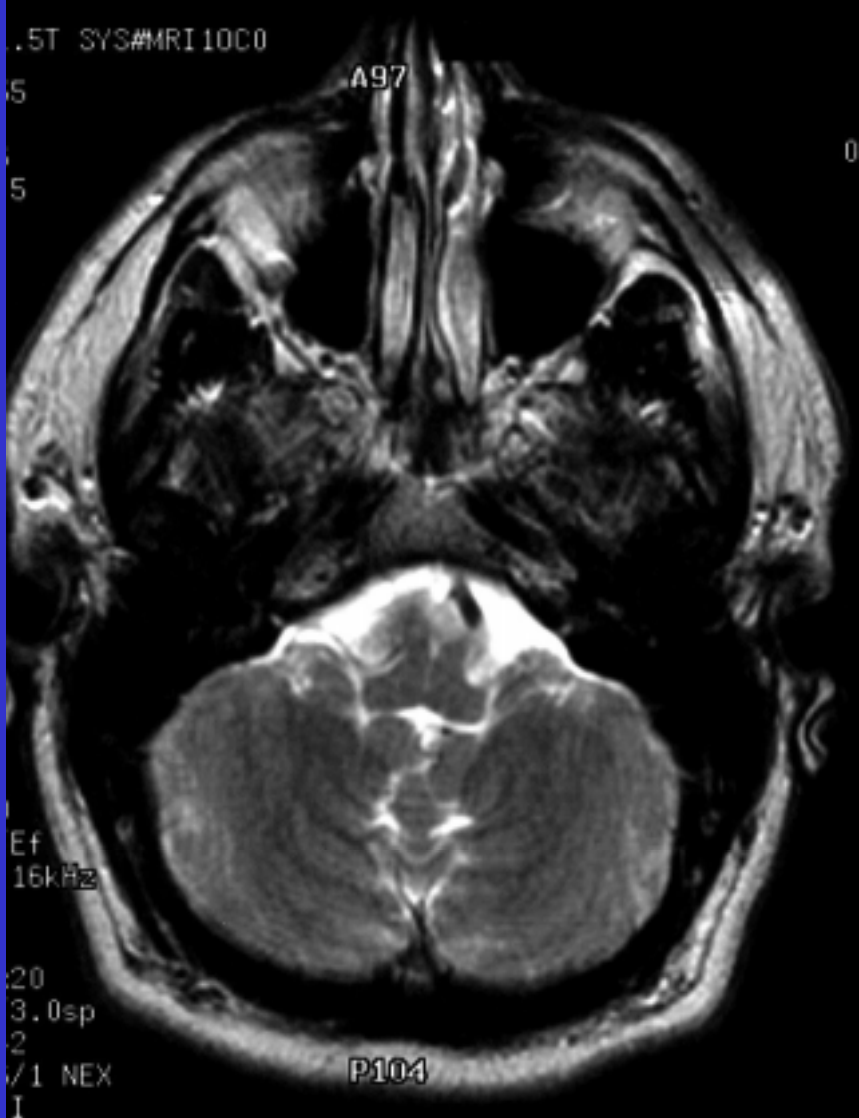


T2 axial MRI

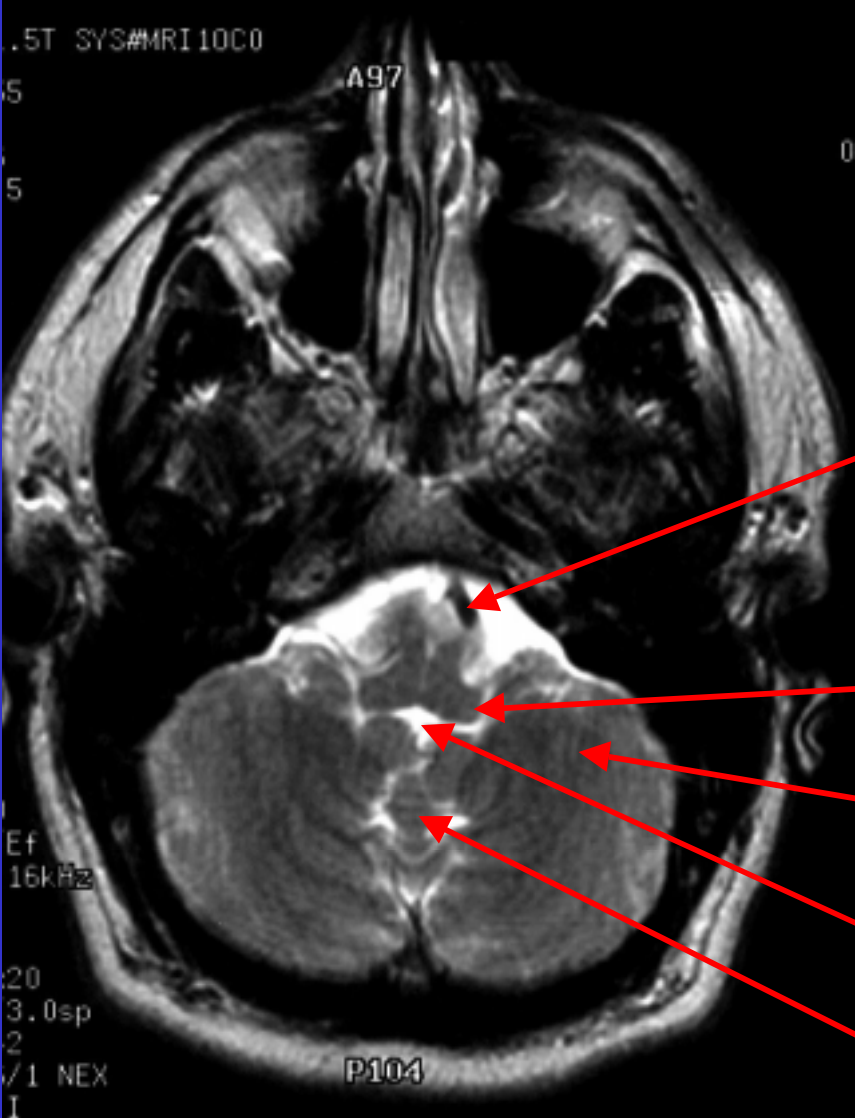


Click on button for answer.
Leave button to hide answer.

T2 axial MRI

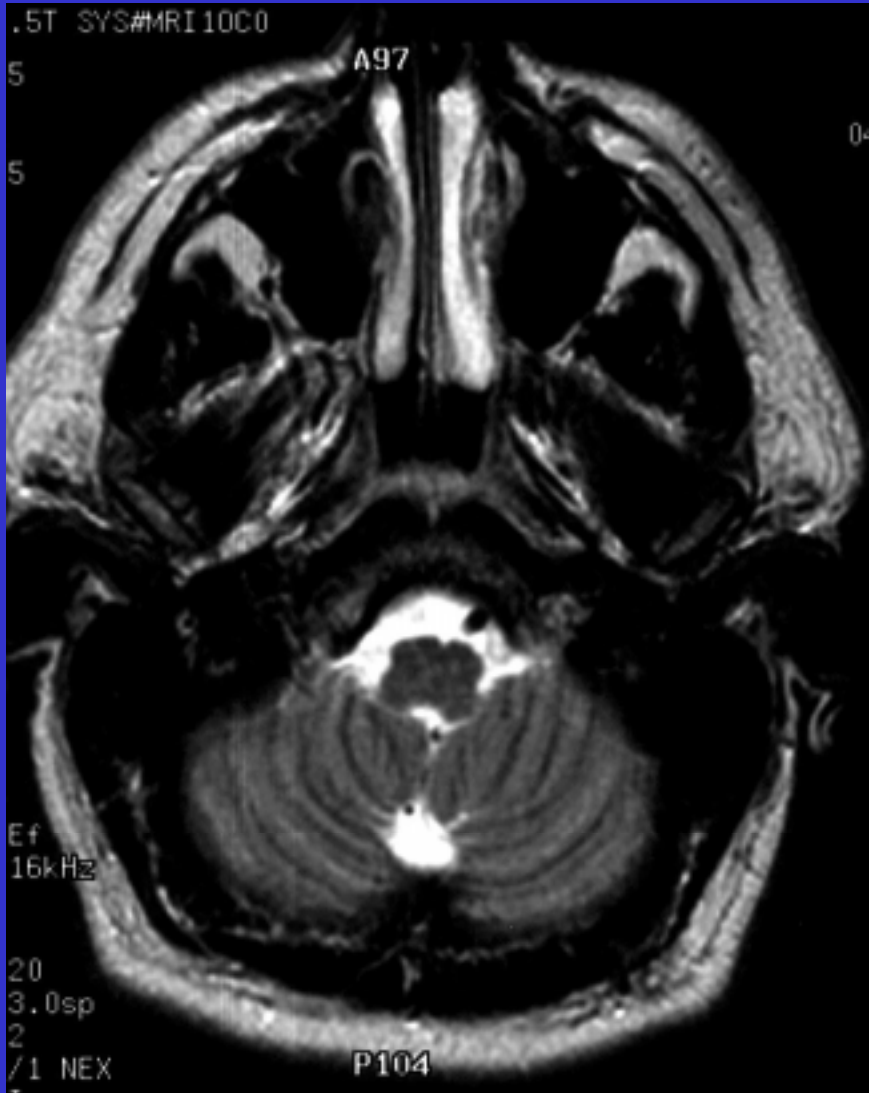


T2 axial MRI

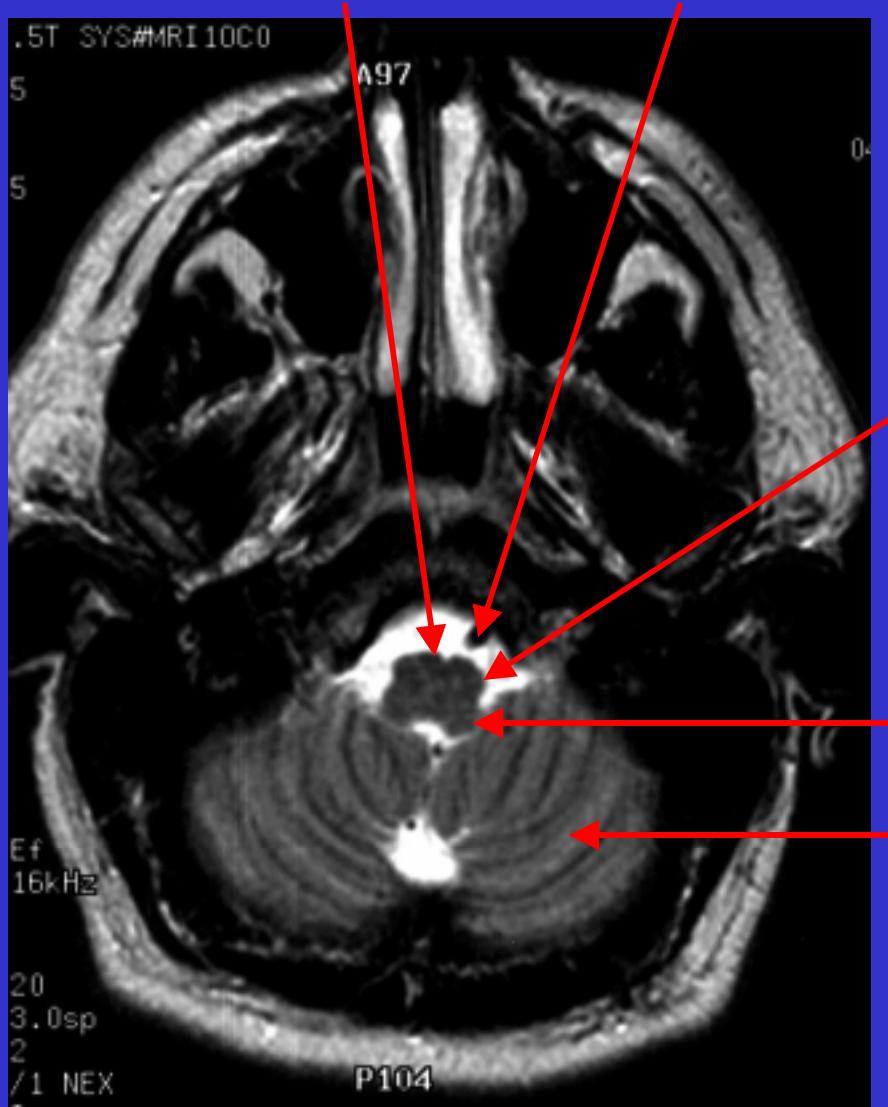


Click on button for answer.
Leave button to hide answer.

T2 axial MRI

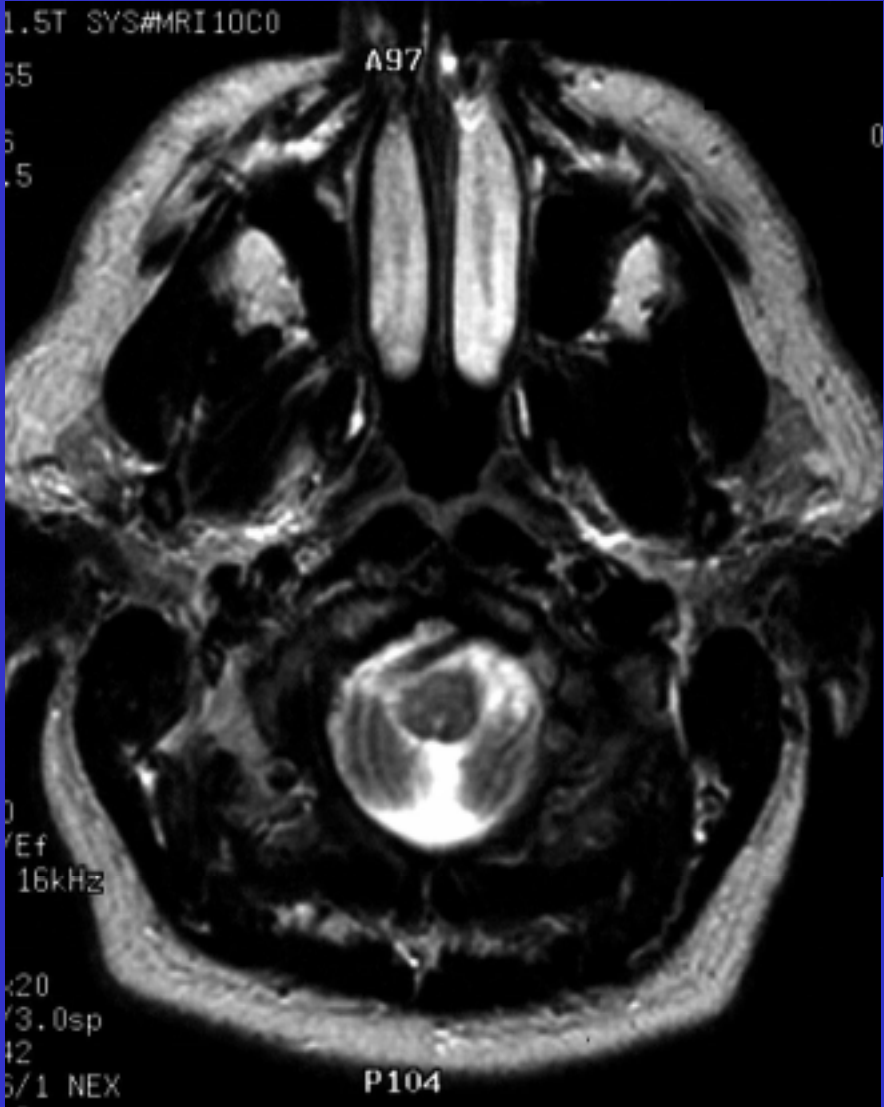


T2 axial MRI

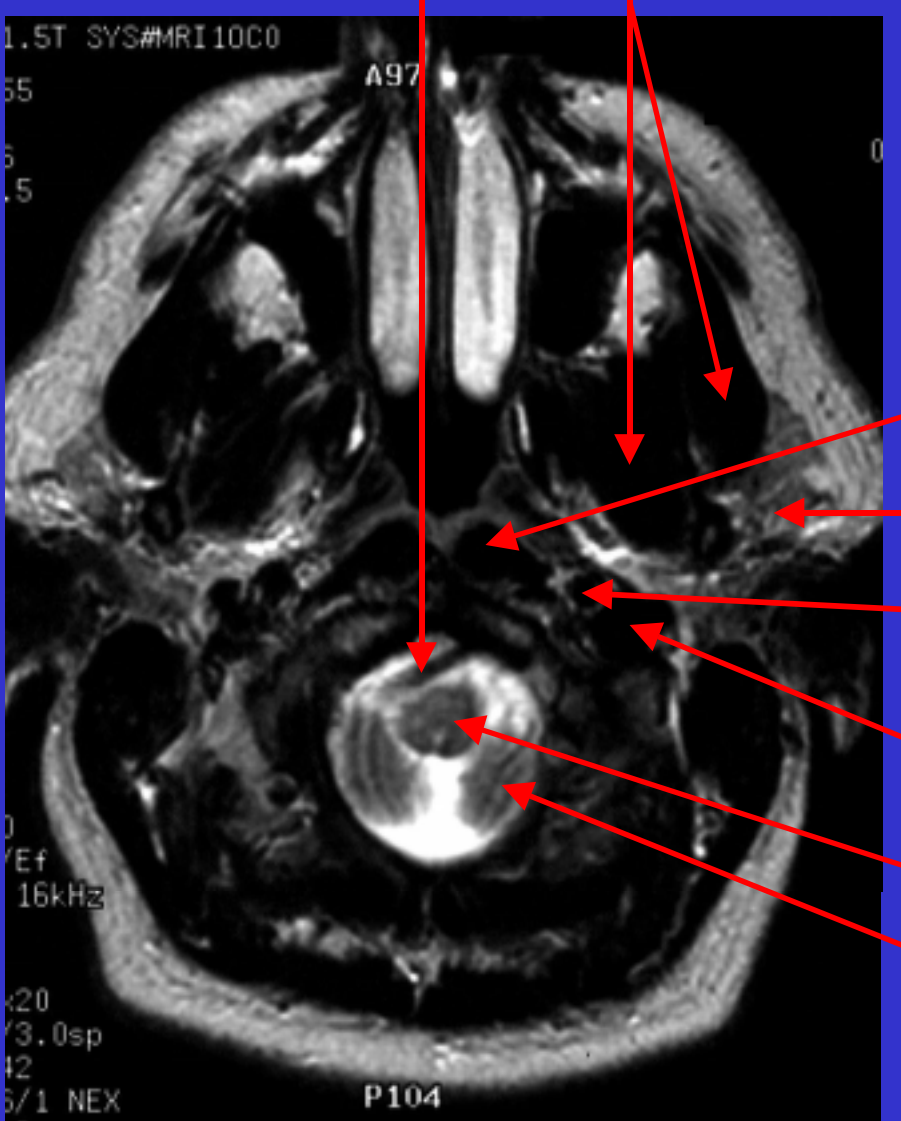


Click on button for answer.
Leave button to hide answer.

T2 axial MRI

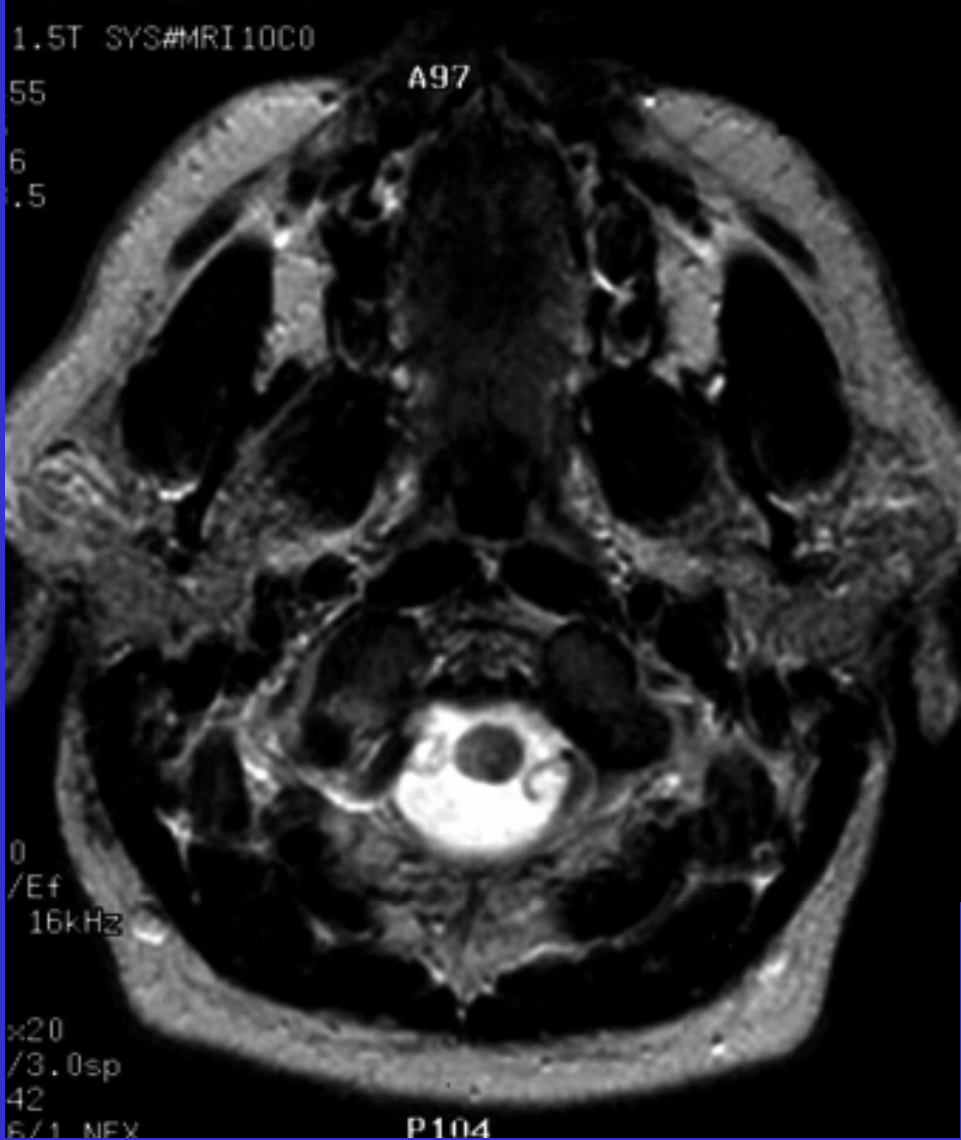


T2 axial MRI

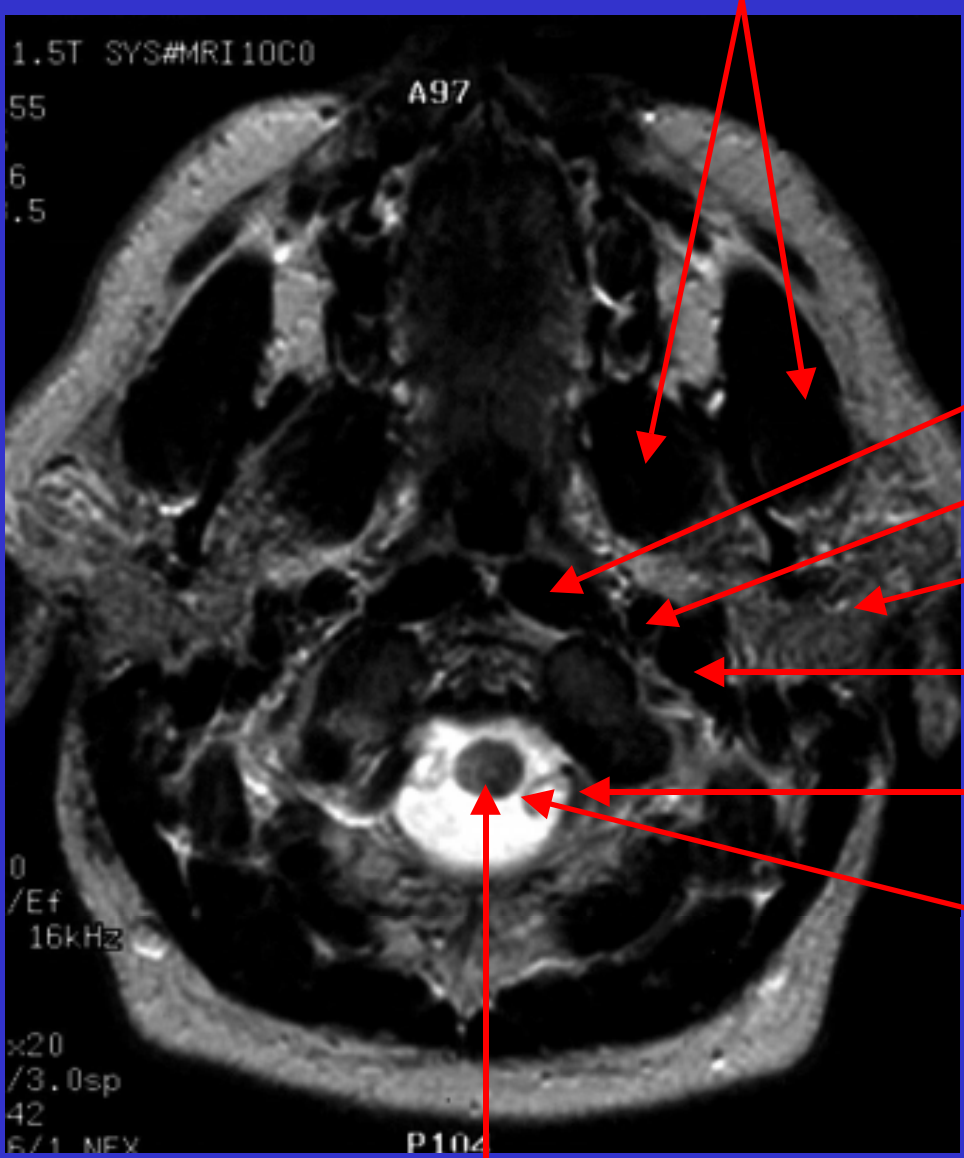


Click on button for answer.
Leave button to hide answer.

T2 axial MRI



T2 axial MRI



Click on button for answer.
Leave button to hide answer.