

Physical Diagnosis in Otolaryngology

Department of Otolaryngology, Head & Neck Surgery
Loyola University Medical Center
Maywood, Illinois

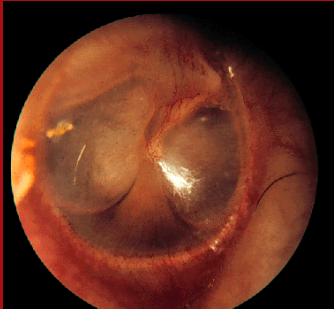
Normal Tympanic Membrane



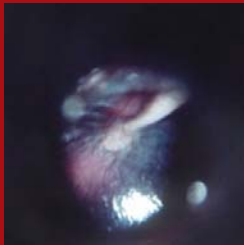
Acute Otitis Media



Serous Otitis Media



Hemotympanum



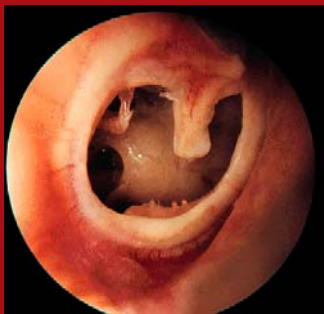
P.E. Tube



Tympanic Membrane Perforation
Partial



Tympanic Membrane Perforation
Near Total



External Auditory Canal
Foreign Body



Otitis Externa



Ototoxic in EAC



Nasal Polyp



Middle Turbinate Adhesions



Middle Meatus- Maxillary Sinus Ostium



Normal

Purulent Drainage



CT Scan - Sinusitis



Allergic Rhinitis



Nasal Septal Perforation



Nasal Bone Fracture



Septal Hematoma



Acute Tonsillitis



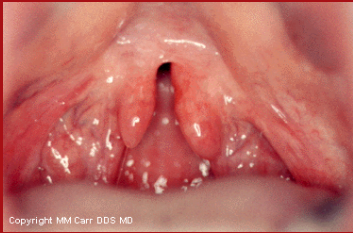
Post-tonsillectomy



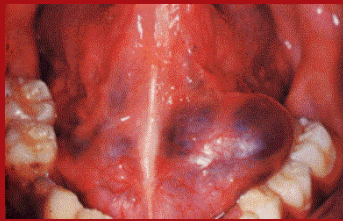
Peritonsillar Abscess



Cleft Palate - Bifid Uvula



Ranula



Squamous Cell Carcinoma of Tongue



Ulcerative



Exophytic

Minor Salivary Gland Tumor



Parotitis



Pleomorphic Adenoma-Parotid



Thyroglossal Duct Cyst



Branchial Cleft Cyst



Enlarged Thyroid



Neck Masses